



Cembre



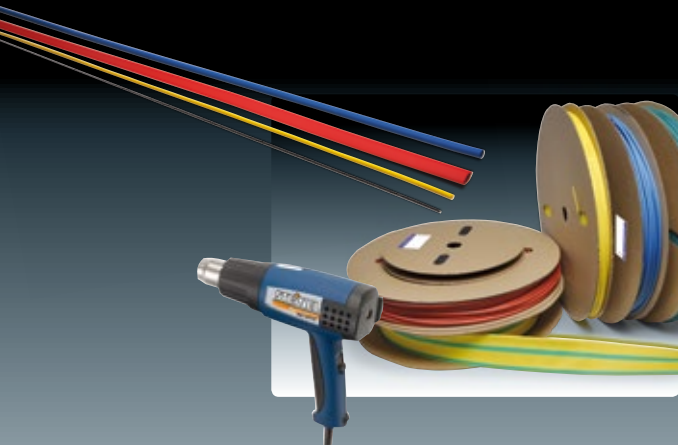
Certified Quality Management System



Certified Environmental Management System



Certified Occupational Health & Safety Management System



HEAT-SHRINKABLE TUBING

CABLE TIES & ACCESSORIES

CABLE & CONDUIT CLIPS

CABLE PREPARATION TOOLS

HAND TOOLS



MARKETline

P R O D U C T S

For every professional, using quality products for each job is essential; Cembre, always attentive to the needs of the electrical sector, presents MARKETline - a single source portfolio of supplementary products for the commercial and industrial installer.

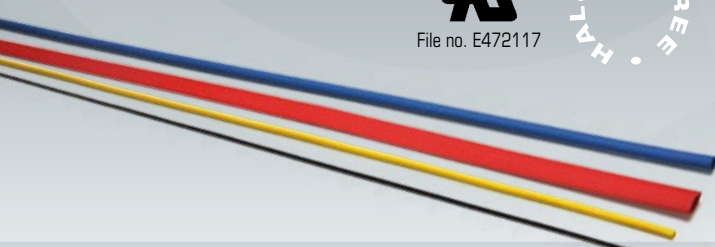
**TERMOSTRIP TSS series,
flame-retardant Polyolefin shrinkage ratio 2÷1**

Main Features

Heat-shrinkable Polyolefin tubing strip for general use; is environmentally neutral, flexible, non-flammable and offers fast heat shrinkage and stable performance.

Main uses include insulation and protection of electrical conductors, connectors and terminations; protection of metal tubes from corrosion; protection of antennae and various identification applications.

- Colours: Black, Red, White, Blue, Transparent, Yellow, Green, Grey, Brown, Yellow/Green.
- Packaging: Strips in Box



Ref.	Colour		Internal Ø before shrinking	Internal Ø after shrinking	Strip Length	Qty Strips per box
TSS24BK	BLACK	●	2.4 mm	1.2 mm	1.22 m	30
TSS32BK	BLACK	●	3.2 mm	1.6 mm	1.22 m	30
TSS48BK	BLACK	●	4.8 mm	2.4 mm	1.22 m	30
TSS64BK	BLACK	●	6.4 mm	3.2 mm	1.22 m	30
TSS95BK	BLACK	●	9.5 mm	4.8 mm	1.22 m	20
TSS127BK	BLACK	●	12.7 mm	6.4 mm	1.22 m	15
TSS190BK	BLACK	●	19.0 mm	9.5 mm	1.22 m	10
TSS254BK	BLACK	●	25.4 mm	12.7 mm	1.22 m	6
TSS380BK	BLACK	●	38.0 mm	19.0 mm	1.22 m	4
TSS510BK	BLACK	●	51.0 mm	25.4 mm	1.22 m	2
TSS24RE	RED	●	2.4 mm	1.2 mm	1.22 m	30
TSS32RE	RED	●	3.2 mm	1.6 mm	1.22 m	30
TSS48RE	RED	●	4.8 mm	2.4 mm	1.22 m	30
TSS64RE	RED	●	6.4 mm	3.2 mm	1.22 m	30
TSS95RE	RED	●	9.5 mm	4.8 mm	1.22 m	20
TSS127RE	RED	●	12.7 mm	6.4 mm	1.22 m	15
TSS190RE	RED	●	19.0 mm	9.5 mm	1.22 m	10
TSS254RE	RED	●	25.4 mm	12.7 mm	1.22 m	6
TSS380RE	RED	●	38.0 mm	19.0 mm	1.22 m	4
TSS510RE	RED	●	51.0 mm	25.4 mm	1.22 m	2
TSS24WH	WHITE	○	2.4 mm	1.2 mm	1.22 m	30
TSS32WH	WHITE	○	3.2 mm	1.6 mm	1.22 m	30
TSS48WH	WHITE	○	4.8 mm	2.4 mm	1.22 m	30
TSS64WH	WHITE	○	6.4 mm	3.2 mm	1.22 m	30
TSS95WH	WHITE	○	9.5 mm	4.8 mm	1.22 m	20
TSS127WH	WHITE	○	12.7 mm	6.4 mm	1.22 m	15
TSS190WH	WHITE	○	19.0 mm	9.5 mm	1.22 m	10
TSS254WH	WHITE	○	25.4 mm	12.7 mm	1.22 m	6
TSS380WH	WHITE	○	38.0 mm	19.0 mm	1.22 m	4
TSS510WH	WHITE	○	51.0 mm	25.4 mm	1.22 m	2
TSS24BU	BLUE	●	2.4 mm	1.2 mm	1.22 m	30
TSS32BU	BLUE	●	3.2 mm	1.6 mm	1.22 m	30
TSS48BU	BLUE	●	4.8 mm	2.4 mm	1.22 m	30
TSS64BU	BLUE	●	6.4 mm	3.2 mm	1.22 m	30
TSS95BU	BLUE	●	9.5 mm	4.8 mm	1.22 m	20
TSS127BU	BLUE	●	12.7 mm	6.4 mm	1.22 m	15
TSS190BU	BLUE	●	19.0 mm	9.5 mm	1.22 m	10
TSS254BU	BLUE	●	25.4 mm	12.7 mm	1.22 m	6
TSS380BU	BLUE	●	38.0 mm	19.0 mm	1.22 m	4
TSS510BU	BLUE	●	51.0 mm	25.4 mm	1.22 m	2
TSS24TR	TRANSPARENT	○	2.4 mm	1.2 mm	1.22 m	30
TSS32TR	TRANSPARENT	○	3.2 mm	1.6 mm	1.22 m	30
TSS48TR	TRANSPARENT	○	4.8 mm	2.4 mm	1.22 m	30
TSS64TR	TRANSPARENT	○	6.4 mm	3.2 mm	1.22 m	30
TSS95TR	TRANSPARENT	○	9.5 mm	4.8 mm	1.22 m	20
TSS127TR	TRANSPARENT	○	12.7 mm	6.4 mm	1.22 m	15
TSS190TR	TRANSPARENT	○	19.0 mm	9.5 mm	1.22 m	10
TSS254TR	TRANSPARENT	○	25.4 mm	12.7 mm	1.22 m	6
TSS380TR	TRANSPARENT	○	38.0 mm	19.0 mm	1.22 m	4
TSS510TR	TRANSPARENT	○	51.0 mm	25.4 mm	1.22 m	2

Ref.	Colour		Internal Ø before shrinking	Internal Ø after shrinking	Strip Length	Qty Strips per box
TSS24YE	YELLOW	●	2.4 mm	1.2 mm	1.22 m	30
TSS32YE	YELLOW	●	3.2 mm	1.6 mm	1.22 m	30
TSS48YE	YELLOW	●	4.8 mm	2.4 mm	1.22 m	30
TSS64YE	YELLOW	●	6.4 mm	3.2 mm	1.22 m	30
TSS95YE	YELLOW	●	9.5 mm	4.8 mm	1.22 m	20
TSS127YE	YELLOW	●	12.7 mm	6.4 mm	1.22 m	15
TSS190YE	YELLOW	●	19.0 mm	9.5 mm	1.22 m	10
TSS254YE	YELLOW	●	25.4 mm	12.7 mm	1.22 m	6
TSS380YE	YELLOW	●	38.0 mm	19.0 mm	1.22 m	4
TSS510YE	YELLOW	●	51.0 mm	25.4 mm	1.22 m	2
TSS24GN	GREEN	●	2.4 mm	1.2 mm	1.22 m	30
TSS32GN	GREEN	●	3.2 mm	1.6 mm	1.22 m	30
TSS48GN	GREEN	●	4.8 mm	2.4 mm	1.22 m	30
TSS64GN	GREEN	●	6.4 mm	3.2 mm	1.22 m	30
TSS95GN	GREEN	●	9.5 mm	4.8 mm	1.22 m	20
TSS127GN	GREEN	●	12.7 mm	6.4 mm	1.22 m	15
TSS190GN	GREEN	●	19.0 mm	9.5 mm	1.22 m	10
TSS254GN	GREEN	●	25.4 mm	12.7 mm	1.22 m	6
TSS380GN	GREEN	●	38.0 mm	19.0 mm	1.22 m	4
TSS510GN	GREEN	●	51.0 mm	25.4 mm	1.22 m	2
TSS24GY	GREY	●	2.4 mm	1.2 mm	1.22 m	30
TSS32GY	GREY	●	3.2 mm	1.6 mm	1.22 m	30
TSS48GY	GREY	●	4.8 mm	2.4 mm	1.22 m	30
TSS64GY	GREY	●	6.4 mm	3.2 mm	1.22 m	30
TSS95GY	GREY	●	9.5 mm	4.8 mm	1.22 m	20
TSS127GY	GREY	●	12.7 mm	6.4 mm	1.22 m	15
TSS190GY	GREY	●	19.0 mm	9.5 mm	1.22 m	10
TSS254GY	GREY	●	25.4 mm	12.7 mm	1.22 m	6
TSS380GY	GREY	●	38.0 mm	19.0 mm	1.22 m	4
TSS510GY	GREY	●	51.0 mm	25.4 mm	1.22 m	2
TSS24BR	BROWN	●	2.4 mm	1.2 mm	1.22 m	30
TSS32BR	BROWN	●	3.2 mm	1.6 mm	1.22 m	30
TSS48BR	BROWN	●	4.8 mm	2.4 mm	1.22 m	30
TSS64BR	BROWN	●	6.4 mm	3.2 mm	1.22 m	30
TSS95BR	BROWN	●	9.5 mm	4.8 mm	1.22 m	20
TSS127BR	BROWN	●	12.7 mm	6.4 mm	1.22 m	15
TSS190BR	BROWN	●	19.0 mm	9.5 mm	1.22 m	10
TSS254BR	BROWN	●	25.4 mm	12.7 mm	1.22 m	6
TSS380BR	BROWN	●	38.0 mm	19.0 mm	1.22 m	4
TSS510BR	BROWN	●	51.0 mm	25.4 mm	1.22 m	2
TSS32Y/G	YELLOW/GREEN	●	3.2 mm	1.6 mm	1.22 m	30
TSS48Y/G	YELLOW/GREEN	●	4.8 mm	2.4 mm	1.22 m	30
TSS64Y/G	YELLOW/GREEN	●	6.4 mm	3.2 mm	1.22 m	30
TSS95Y/G	YELLOW/GREEN	●	9.5 mm	4.8 mm	1.22 m	20
TSS127Y/G	YELLOW/GREEN	●	12.7 mm	6.4 mm	1.22 m	15
TSS190Y/G	YELLOW/GREEN	●	19.0 mm	9.5 mm	1.22 m	10
TSS254Y/G	YELLOW/GREEN	●	25.4 mm	12.7 mm	1.22 m	6
TSS380Y/G	YELLOW/GREEN	●	38.0 mm	19.0 mm	1.22 m	4

TERMOSTRIP TSS series, flame-retardant Polyolefin shrinkage ratio 2:1

General characteristics:

- Operating temperature: -55°C + 125°C
- Minimum shrinkage temperature: 70°C
- Temperature for complete shrinkage: 110°C

Technical Specifications:

Property	Test Method	Performance
Traction resistance (MPa):	ASRM D2671	≥10.4
Elongation at failure (%):	ASRM D2671	≥200
Traction resistance after heat ageing (MPa):	UL 224 158°Cx168hr	≥7.3
Elongation at failure after heat ageing: (%):	UL 224 158°Cx168hr	≥100
Heat resistance:	UL 224 250°Cx4hr	No failure
Low temperature flexibility:	UL 224 -30°Cx4hr	No failure
Dielectric strength (kv/mm):	IEC 243	≥15
Insulation resistance:	600V UL 224	No perforation at 2500V
Volume resistance (Ω.cm):	IEC 93	≥1x10 ¹⁴
Corrosive action:	UL 224 158°Cx168hr	Not corrosive
Copper compatibility:	UL 224 158°Cx168hr	Not corrosive
Flammability:	UL 224	VW-1

**TERMOCOIL TCS series,
flame-retardant Polyolefin shrinkage ratio 2:1**

Main Features

Heat-shrinkable Polyolefin tubing coil for general use; is environmentally neutral, flexible, non-flammable and offers fast heat shrinkage and stable performance. Main uses include insulation and protection of electrical conductors, connectors and terminations; protection of metal tubes from corrosion; protection of antennae and various identification applications.

- Colours: Black, Red, White, Blue, Yellow, Green, Grey, Brown, Yellow/Green. Consult Cembre for availability of other colours.
- Packaging: Coil on Reel.



Ref.	Colour	Internal Ø before shrinking	Internal Ø after shrinking	Coil Length
TCS12X200BK	BLACK ●	1.2 mm	0.6 mm	200 m
TCS16X200BK	BLACK ●	1.6 mm	0.8 mm	200 m
TCS24X200BK	BLACK ●	2.4 mm	1.2 mm	200 m
TCS32X200BK	BLACK ●	3.2 mm	1.6 mm	200 m
TCS48X100BK	BLACK ●	4.8 mm	2.4 mm	100 m
TCS64X100BK	BLACK ●	6.4 mm	3.2 mm	100 m
TCS95X100BK	BLACK ●	9.5 mm	4.8 mm	100 m
TCS127X100BK	BLACK ●	12.7 mm	6.4 mm	100 m
TCS160X100BK	BLACK ●	16.0 mm	8.0 mm	100 m
TCS190X100BK	BLACK ●	19.0 mm	9.5 mm	100 m
TCS254X50BK	BLACK ●	25.4 mm	12.7 mm	50 m
TCS320X50BK	BLACK ●	32.0 mm	16.0 mm	50 m
TCS381X50BK	BLACK ●	38.1 mm	19.0 mm	50 m
TCS508X25BK	BLACK ●	50.8 mm	25.4 mm	25 m
TCS762X25BK	BLACK ●	76.2 mm	38.1 mm	25 m
TCS1016X25BK	BLACK ●	101.6 mm	50.8 mm	25 m
TCS1260X25BK	BLACK ●	126.0 mm	63.0 mm	25 m
TCS1500X25BK	BLACK ●	150.0 mm	75.0 mm	25 m
TCS16X200RE	RED ●	1.6 mm	0.8 mm	200 m
TCS24X200RE	RED ●	2.4 mm	1.2 mm	200 m
TCS32X200RE	RED ●	3.2 mm	1.6 mm	200 m
TCS48X100RE	RED ●	4.8 mm	2.4 mm	100 m
TCS64X100RE	RED ●	6.4 mm	3.2 mm	100 m
TCS95X100RE	RED ●	9.5 mm	4.8 mm	100 m
TCS127X100RE	RED ●	12.7 mm	6.4 mm	100 m
TCS190X100RE	RED ●	19.0 mm	9.5 mm	100 m
TCS254X50RE	RED ●	25.4 mm	12.7 mm	50 m
TCS16X200WH	WHITE ○	1.6 mm	0.8 mm	200 m
TCS24X200WH	WHITE ○	2.4 mm	1.2 mm	200 m
TCS32X200WH	WHITE ○	3.2 mm	1.6 mm	200 m
TCS48X100WH	WHITE ○	4.8 mm	2.4 mm	100 m
TCS64X100WH	WHITE ○	6.4 mm	3.2 mm	100 m
TCS95X100WH	WHITE ○	9.5 mm	4.8 mm	100 m
TCS127X100WH	WHITE ○	12.7 mm	6.4 mm	100 m
TCS190X100WH	WHITE ○	19.0 mm	9.5 mm	100 m
TCS254X50WH	WHITE ○	25.4 mm	12.7 mm	50 m
TCS16X200BU	BLUE ●	1.6 mm	0.8 mm	200 m
TCS24X200BU	BLUE ●	2.4 mm	1.2 mm	200 m
TCS32X200BU	BLUE ●	3.2 mm	1.6 mm	200 m
TCS48X100BU	BLUE ●	4.8 mm	2.4 mm	100 m
TCS64X100BU	BLUE ●	6.4 mm	3.2 mm	100 m
TCS95X100BU	BLUE ●	9.5 mm	4.8 mm	100 m
TCS127X100BU	BLUE ●	12.7 mm	6.4 mm	100 m
TCS190X100BU	BLUE ●	19.0 mm	9.5 mm	100 m
TCS254X50BU	BLUE ●	25.4 mm	12.7 mm	50 m

Ref.	Colour		Internal Ø before shrinking	Internal Ø after shrinking	Coil Length
TCS16X200YE	YELLOW	●	1.6 mm	0.8 mm	200 m
TCS24X200YE	YELLOW	●	2.4 mm	1.2 mm	200 m
TCS32X200YE	YELLOW	●	3.2 mm	1.6 mm	200 m
TCS48X100YE	YELLOW	●	4.8 mm	2.4 mm	100 m
TCS64X100YE	YELLOW	●	6.4 mm	3.2 mm	100 m
TCS95X100YE	YELLOW	●	9.5 mm	4.8 mm	100 m
TCS127X100YE	YELLOW	●	12.7 mm	6.4 mm	100 m
TCS190X100YE	YELLOW	●	19.0 mm	9.5 mm	100 m
TCS254X50YE	YELLOW	●	25.4 mm	12.7 mm	50 m
TCS16X200GN	GREEN	●	1.6 mm	0.8 mm	200 m
TCS24X200GN	GREEN	●	2.4 mm	1.2 mm	200 m
TCS32X200GN	GREEN	●	3.2 mm	1.6 mm	200 m
TCS48X100GN	GREEN	●	4.8 mm	2.4 mm	100 m
TCS64X100GN	GREEN	●	6.4 mm	3.2 mm	100 m
TCS95X100GN	GREEN	●	9.5 mm	4.8 mm	100 m
TCS127X100GN	GREEN	●	12.7 mm	6.4 mm	100 m
TCS190X100GN	GREEN	●	19.0 mm	9.5 mm	100 m
TCS254X50GN	GREEN	●	25.4 mm	12.7 mm	50 m
TCS16X200GY	GREY	●	1.6 mm	0.8 mm	200 m
TCS24X200GY	GREY	●	2.4 mm	1.2 mm	200 m
TCS32X200GY	GREY	●	3.2 mm	1.6 mm	200 m
TCS48X100GY	GREY	●	4.8 mm	2.4 mm	100 m
TCS64X100GY	GREY	●	6.4 mm	3.2 mm	100 m
TCS95X100GY	GREY	●	9.5 mm	4.8 mm	100 m
TCS127X100GY	GREY	●	12.7 mm	6.4 mm	100 m
TCS190X100GY	GREY	●	19.0 mm	9.5 mm	100 m
TCS254X50GY	GREY	●	25.4 mm	12.7 mm	50 m
TCS381X50GY	GREY	●	38.1 mm	19.0 mm	50 m
TCS16X200BR	BROWN	●	1.6 mm	0.8 mm	200 m
TCS24X200BR	BROWN	●	2.4 mm	1.2 mm	200 m
TCS32X200BR	BROWN	●	3.2 mm	1.6 mm	200 m
TCS48X100BR	BROWN	●	4.8 mm	2.4 mm	100 m
TCS64X100BR	BROWN	●	6.4 mm	3.2 mm	100 m
TCS95X100BR	BROWN	●	9.5 mm	4.8 mm	100 m
TCS127X100BR	BROWN	●	12.7 mm	6.4 mm	100 m
TCS190X100BR	BROWN	●	19.0 mm	9.5 mm	100 m
TCS254X50BR	BROWN	●	25.4 mm	12.7 mm	50 m
TCS381X50BR	BROWN	●	38.1 mm	19.0 mm	50 m
TCS32X200Y/G	YELLOW / GREEN	●	3.2 mm	1.6 mm	200 m
TCS48X100Y/G	YELLOW / GREEN	●	4.8 mm	2.4 mm	100 m
TCS64X100Y/G	YELLOW / GREEN	●	6.4 mm	3.2 mm	100 m
TCS95X100Y/G	YELLOW / GREEN	●	9.5 mm	4.8 mm	100 m
TCS127X100Y/G	YELLOW / GREEN	●	12.7 mm	6.4 mm	100 m
TCS190X100Y/G	YELLOW / GREEN	●	19.0 mm	9.5 mm	100 m
TCS254X50Y/G	YELLOW / GREEN	●	25.4 mm	12.7 mm	50 m
TCS381X50Y/G	YELLOW / GREEN	●	38.1 mm	19.0 mm	50 m
TCS508X25Y/G	YELLOW / GREEN	●	50.8 mm	25.4 mm	25 m

TERMOCOIL TCS series, flame-retardant Polyolefin shrinkage ratio 2:1

General characteristics:

- Operating temperature: -55°C + 125°C
- Minimum shrinkage temperature: 70°C
- Temperature for complete shrinkage: 110°C

Technical Specifications:

Property	Test Method	Performance
Traction resistance (MPa):	ASRM D2671	≥10.4
Elongation at failure (%):	ASRM D2671	≥200
Traction resistance after heat ageing (MPa):	UL 224 158°Cx168hr	≥7.3
Elongation at failure after heat ageing (%):	UL 224 158°Cx168hr	≥100
Heat resistance:	UL 224 250°Cx4hr	No failure
Low temperature flexibility:	UL 224 -30°Cx4hr	No failure
Dielectric strength (kv/mm):	IEC 243	≥15
Insulation resistance:	600V UL 224	No perforation at 2500V
Volume resistance (Ω.cm):	IEC 93	≥1x10 ¹⁴
Corrosive action:	UL 224 158°Cx168hr	Not corrosive
Copper compatibility:	UL 224 158°Cx168hr	Not corrosive
Flammability:	UL 224	VW-1

**TERMOBLOCK TBS series,
flame-retardant Polyolefin shrinkage ratio 2÷1**

Main Features

Heat-shrinkable Polyolefin tubing for general use; is environmentally neutral, flexible, non-flammable and offers fast heat shrinkage and stable performance. Main uses include insulation and protection of electrical conductors, connectors and terminations; protection of metal tubes from corrosion; protection of antennae and various identification applications.

- Colours: Black, Red, White, Blue, Grey, Brown, Yellow/Green. Consult Cembre for availability of other colours.
- Packaging: Roll in Dispenser Box



File no. E472117



Ref.	Colour		Internal Ø before shrinking	Internal Ø after shrinking	Reel Length
TBS16x20BK	BLACK	●	1.6 mm	0.8 mm	20 m
TBS24x20BK	BLACK	●	2.4 mm	1.2 mm	20 m
TBS32x10BK	BLACK	●	3.2 mm	1.6 mm	10 m
TBS48x10BK	BLACK	●	4.8 mm	2.4 mm	10 m
TBS64x10BK	BLACK	●	6.4 mm	3.2 mm	10 m
TBS95x10BK	BLACK	●	9.5 mm	4.8 mm	10 m
TBS127x10BK	BLACK	●	12.7 mm	6.4 mm	10 m
TBS190x5BK	BLACK	●	19.0 mm	9.5 mm	5 m
TBS254x5BK	BLACK	●	25.4 mm	12.7 mm	5 m
TBS16x20RE	RED	●	1.6 mm	0.8 mm	20 m
TBS24x20RE	RED	●	2.4 mm	1.2 mm	20 m
TBS32x10RE	RED	●	3.2 mm	1.6 mm	10 m
TBS48x10RE	RED	●	4.8 mm	2.4 mm	10 m
TBS64x10RE	RED	●	6.4 mm	3.2 mm	10 m
TBS95x10RE	RED	●	9.5 mm	4.8 mm	10 m
TBS127x10RE	RED	●	12.7 mm	6.4 mm	10 m
TBS190x5RE	RED	●	19.0 mm	9.5 mm	5 m
TBS254x5RE	RED	●	25.4 mm	12.7 mm	5 m
TBS16x20WH	WHITE	○	1.6 mm	0.8 mm	20 m
TBS24x20WH	WHITE	○	2.4 mm	1.2 mm	20 m
TBS32x10WH	WHITE	○	3.2 mm	1.6 mm	10 m
TBS48x10WH	WHITE	○	4.8 mm	2.4 mm	10 m
TBS64x10WH	WHITE	○	6.4 mm	3.2 mm	10 m
TBS95x10WH	WHITE	○	9.5 mm	4.8 mm	10 m
TBS127x10WH	WHITE	○	12.7 mm	6.4 mm	10 m
TBS190x5WH	WHITE	○	19.0 mm	9.5 mm	5 m
TBS254x5WH	WHITE	○	25.4 mm	12.7 mm	5 m
TBS16x20BU	BLUE	●	1.6 mm	0.8 mm	20 m
TBS24x20BU	BLUE	●	2.4 mm	1.2 mm	20 m
TBS32x10BU	BLUE	●	3.2 mm	1.6 mm	10 m
TBS48x10BU	BLUE	●	4.8 mm	2.4 mm	10 m
TBS64x10BU	BLUE	●	6.4 mm	3.2 mm	10 m
TBS95x10BU	BLUE	●	9.5 mm	4.8 mm	10 m
TBS127x10BU	BLUE	●	12.7 mm	6.4 mm	10 m
TBS190x5BU	BLUE	●	19.0 mm	9.5 mm	5 m
TBS254x5BU	BLUE	●	25.4 mm	12.7 mm	5 m
TBS16x20GY	GREY	●	1.6 mm	0.8 mm	20 m
TBS24x20GY	GREY	●	2.4 mm	1.2 mm	20 m
TBS32x10GY	GREY	●	3.2 mm	1.6 mm	10 m
TBS48x10GY	GREY	●	4.8 mm	2.4 mm	10 m
TBS64x10GY	GREY	●	6.4 mm	3.2 mm	10 m
TBS95x10GY	GREY	●	9.5 mm	4.8 mm	10 m
TBS127x10GY	GREY	●	12.7 mm	6.4 mm	10 m
TBS190x5GY	GREY	●	19.0 mm	9.5 mm	5 m
TBS254x5GY	GREY	●	25.4 mm	12.7 mm	5 m

Ref.	Colour	Internal Ø before shrinking	Internal Ø after shrinking	Reel Length
TBS16x20BR	BROWN	1.6 mm	0.8 mm	20 m
TBS24x20BR	BROWN	2.4 mm	1.2 mm	20 m
TBS32x10BR	BROWN	3.2 mm	1.6 mm	10 m
TBS48x10BR	BROWN	4.8 mm	2.4 mm	10 m
TBS64x10BR	BROWN	6.4 mm	3.2 mm	10 m
TBS95x10BR	BROWN	9.5 mm	4.8 mm	10 m
TBS127x10BR	BROWN	12.7 mm	6.4 mm	10 m
TBS190x5BR	BROWN	19.0 mm	9.5 mm	5 m
TBS254x5BR	BROWN	25.4 mm	12.7 mm	5 m

TBS16x20Y/G	YELLOW/GREEN	1.6 mm	0.8 mm	20 m
TBS24x20Y/G	YELLOW/GREEN	2.4 mm	1.2 mm	20 m
TBS32x10Y/G	YELLOW/GREEN	3.2 mm	1.6 mm	10 m
TBS48x10Y/G	YELLOW/GREEN	4.8 mm	2.4 mm	10 m
TBS64x10Y/G	YELLOW/GREEN	6.4 mm	3.2 mm	10 m
TBS95x10Y/G	YELLOW/GREEN	9.5 mm	4.8 mm	10 m
TBS127x10Y/G	YELLOW/GREEN	12.7 mm	6.4 mm	10 m
TBS190x5Y/G	YELLOW/GREEN	19.0 mm	9.5 mm	5 m
TBS254x5Y/G	YELLOW/GREEN	25.4 mm	12.7 mm	5 m



DSP-TCS

Support frame for heat shrinkable tubing on a reel

EHG 2000

Variable temperature electronic heat gun, power 2000 W
Weight: 850 g;
Temperature: 50°C to 600°C
Voltage: 230-240 V - 50 Hz



TERMOBLOCK TBS series, flame-retardant Polyolefin shrinkage ratio 2:1

General characteristics:

- Operating temperature: -55°C + 125°C
- Minimum shrinkage temperature: 70°C
- Temperature for complete shrinkage: 110°C

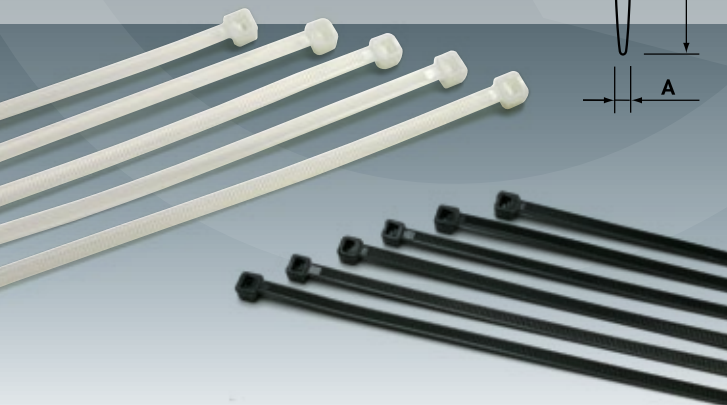
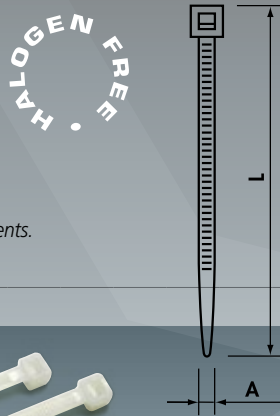
Technical Specifications:

Property	Test Method	Performance
Traction resistance (MPa):	ASRM D2671	≥10.4
Elongation at failure (%):	ASRM D2671	≥200
Traction resistance after heat ageing (MPa):	UL 224 158°Cx168hr	≥7.3
Elongation at failure after heat ageing (%):	UL 224 158°Cx168hr	≥100
Heat resistance:	UL 224 250°Cx4hr	No failure
Low temperature flexibility:	UL 224 -30°Cx4hr	No failure
Dielectric strength (kv/mm):	IEC 243	≥15
Insulation resistance:	600V UL 224	No perforation at 2500V
Volume resistance (Ω.cm):	IEC 93	≥1x10 ¹⁴
Corrosive action:	UL 224 158°Cx168hr	Not corrosive
Copper compatibility:	UL 224 158°Cx168hr	Not corrosive
Flammability:	UL 224	VW-1

G series, PA6.6 Polyamide

Main Features

Material: PA6.6 Polyamide
 Self-extinguishing V2 (UL 94)
 Humidity absorption:
 2,5% (at 50% relative humidity)
 Operating temperature:
 From -40°C to +85°C (continuous)
 From -40°C to +120°C (short periods)
 Resistant to:
 oils, greases, oil products, chlorinated solvents.
 Colour: Natural or Black (Ral 2005)



Black ties have higher UV resistance due to increased carbon black loading



Natural ties offer rapid installation due to the low friction coefficient of the material

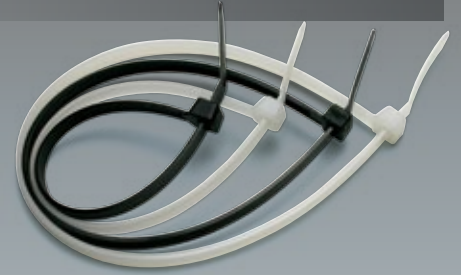


Type	L (mm)	A (mm)	Max. Bundle Ø (mm)	Min. Loop Tensile Strength (kg)	Quantity		
G80X2.4	80	2.4	15	8	100		
G80X2.4N					1000		
G80X2.4/M			16		100		
G80X2.4N/M					1000		
G90X2.4	90	2.4	16		8	100	
G90X2.4N						1000	
G100X2.5			22			1000	
G100X2.5N							30
G100X2.5/M	33	1000					
G100X2.5N/M		140	2.5	33			1000
G120X2.5	40					1000	
G120X2.5N				40		100	
G140X2.5	160				2.5	33	1000
G140X2.5N		53	1000				
G140X2.5/M			53	100			
G140X2.5N/M		200		2.5		53	1000
G160X2.5	65		100				
G160X2.5N					76	14	
G160X2.5N/M	76						1000
G200X2.5		120		3.6	30		
G200X2.5N	33		1000				
G200X2.5/M						35	
G200X2.5N/M	44						1000
G250X2.8		53		100			
G250X2.8N	65		1000				
G300X2.8		65			100		
G300X2.8N	76					1000	
G120X3.6		76		1000			
G120X3.6N	102		100				
G140X3.6		102			1000		
G140X3.6N	124					100	
G140X3.6/M		138		1000			
G140X3.6N/M	146		1000				
G150X3.6		146			1000		
G150X3.6N	150					1000	
G180X3.6		150		1000			
G180X3.6N	160		1000				
G200X3.6		160			1000		
G200X3.6N	190					1000	
G200X3.6/M		190		1000			
G200X3.6N/M	200		1000				
G250X3.6		200			1000		
G250X3.6N	200					1000	
G300X3.6		200		1000			
G300X3.6N	250		1000				
G300X3.6/M		250			1000		
G300X3.6N/M	250					1000	
G370X3.6		250		1000			
G370X3.6N	250		1000				
G120X4.8		250			1000		
G120X4.8N	250					1000	
G160X4.8		250		1000			
G160X4.8N	250		1000				
G190X4.8		250			1000		
G190X4.8N	250					1000	
G190X4.8/M		250		1000			
G190X4.8N/M	250		1000				
G200X4.8		250			1000		
G200X4.8N	250					1000	
G200X4.8/M		250		1000			
G200X4.8N/M	250		1000				
G250X4.8/M		250			1000		
G250X4.8N/M	250					1000	
G250X4.8		250		1000			
G250X4.8N	250		1000				
G280X4.8		250			1000		
G280X4.8N	250					1000	
G300X4.8		250		1000			
G300X4.8N	250		1000				
G370X4.8		250			1000		
G370X4.8N	250					1000	
G390X4.8		250		1000			
G390X4.8N	250		1000				
G430X4.8		250			1000		
G430X4.8N	250					1000	

Type	L (mm)	A (mm)	Max. Bundle Ø (mm)	Min. Loop Tensile Strength (kg)	Quantity
G450X4.8	450	4.8	116	22	100
G450X4.8N					
G530X4.8			140		
G530X4.8N	530	7.6	33	55	
G150X7.6			50		
G200X7.6			65		
G200X7.6N	200	7.6	76	55	
G250X7.6			102		
G250X7.6N			125		
G300X7.6	300	7.6	140	55	
G300X7.6N			110		
G370X7.6			140		
G370X7.6N	370	9.0	190	80	
G430X7.6			228		
G430X7.6N			239		
G530X7.6	530	9.0	263	80	
G530X7.6N			295		
G430X9.0			365		
G430X9.0N	430	9.0	230	115	
G530X9.0			106		
G530X9.0N			120		
G710X9.0	710	9.0	152	115	
G710X9.0N			204		
G780X9.0			248		
G780X9.0N	780	9.0	295	115	
G830X9.0			50		
G830X9.0N			106		
G830X9.0N	830	12.6	120	115	
G920X9.0			152		
G920X9.0N			204		
G1020X9.0	1020	12.6	248	115	
G1020X9.0N			295		
G1220X9.0			50		
G1220X9.0N	1220	12.6	106	115	
G230X12.6			120		
G230X12.6N			152		
G380X12.6	380	12.6	204	115	
G380X12.6N			248		
G480X12.6			295		
G480X12.6N	480	12.6	50	115	
G580X12.6			106		
G580X12.6N			120		
G730X12.6	730	12.6	152	115	
G730X12.6N			204		
G880X12.6			248		
G880X12.6N	880	12.6	295	115	
G1030X12.6			50		
G1030X12.6N			106		

Note: In Type, N = Black

G series, PA6.6 Polyamide



Angled tongue to facilitate easy introduction into the buckle



Rounded corners for increased safety



Type	L (mm)	A (mm)	Max. Bundle Ø (mm)	Min. Loop Tensile Strength (kg)	Quantity
G90X2.4 V0	90	2.4	16	8	100
G100X2.5/M V0	100		22		1000
G140X2.5/M V0	140		33		1000
G200X2.5/M V0	200	3.6	53	18	1000
G150X3.6 V0	150		35		100
G200X4.8/M V0	200		50		1000
G370X4.8 V0	370	4.8	102	22	100
G430X4.8 V0	430		110		100
G710X9.0 V0	710		190		80

G series, PA6.6 Polyamide, V0 (UL94)

Main Features

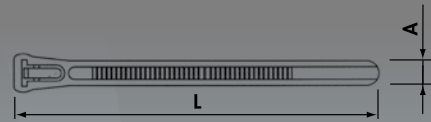
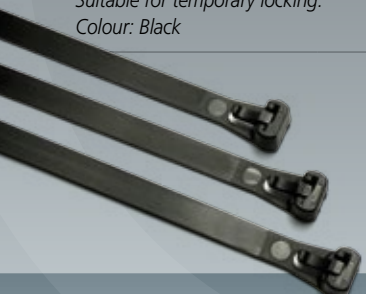
Same features as G series except: self-extinguishing V0 (UL 94)
Colour: Natural



**GR series,
Releasable cable ties in PA6.6 Polyamide**

Main Features

Same features as G series.
Easy installation without tools.
Released by pressure on the tongue.
Suitable for temporary locking.
Colour: Black

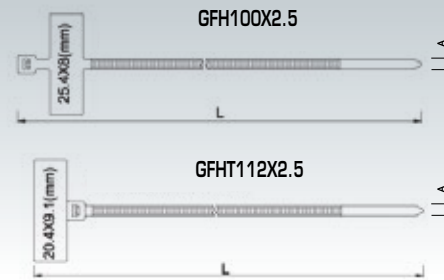


Type	L (mm)	A (mm)	Max. Bundle Ø (mm)	Min. Loop Tensile Strength (kg)	Quantity
GR100X7.6N	100	7.6	20	22.2	100
GR120X7.6N	120		30		
GR150X7.6N	150		35		
GR200X7.6N	200		50		
GR250X7.6N	250		66		
GR300X7.6N	300		80		
GR370X7.6N	370		102		

**GFH series,
Markable cable ties in PA6.6 Polyamide**

Main Features

Same features as G series.
Quick and easy identification of bundled conductors.
Write on panel with Felt tip pen.
Colour: Natural

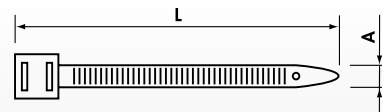


Type	L (mm)	A (mm)	Max. Bundle Ø (mm)	Min. Loop Tensile Strength (kg)	Quantity
GFH100X2.5	100	2.5	18	8.1	100
GFHT112X2.5	112				

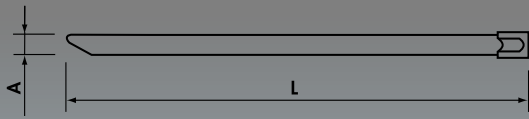
**1600 series,
Elastomerized Polymer on Polyamide base**

Main Features

Material: Elastomerized Polymer on Polyamide base
Self-extinguishing HB (UL94) - Halogen free
Operating temperature:
From -45°C to + 85°C (continuous)
From -45°C to + 120°C (short periods)
Resistant to: UV, salt atmosphere, oils, greases, oil products
Colour: Black



Type	Head Type	L (mm)	A (mm)	Min. Bundle Ø (mm)	Max. Bundle Ø (mm)	Min. Loop Tensile Strength (kg)	Qty
1618.90	single	180	9	15	40	40	100
1626.90	double	260	9	30	60	55	100
1636.90	double	360	9	30	93	55	100
1651.90	double	510	9	70	140	55	100
1676.90	double	760	9	70	220	55	100

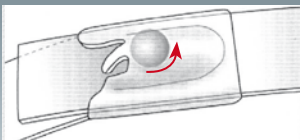


Type	L (mm)	A (mm)	Max. Bundle Ø (mm)	Min. Loop Tensile Strength (kg)	Quantity
GX200X4.5	200	4.5	50	46	100
GX300X4.5	300		76		
GX370X4.5	370		102		
GX520X4.5	520		156		
GX370X7.9	370	7.9	102	114	
GX680X7.9	680		207		
GX1020X7.9	1020		312		

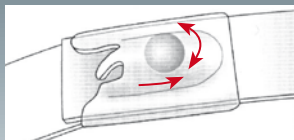
GX series, Stainless Steel AISI 304

Main Features

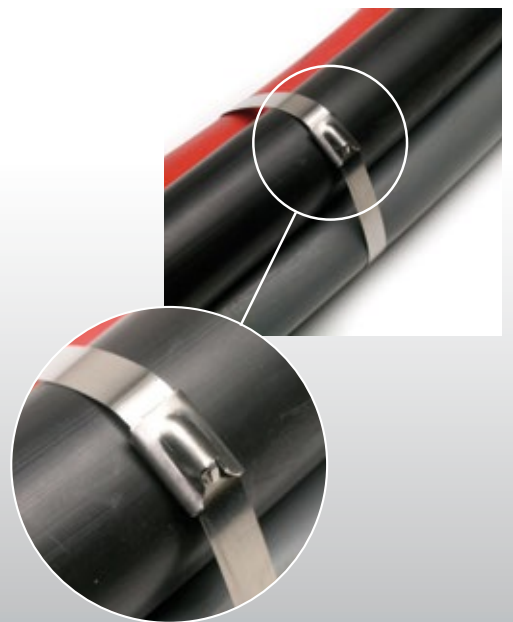
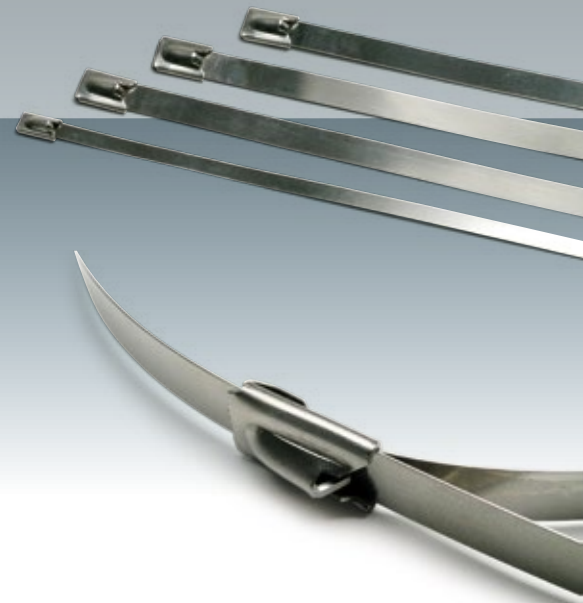
Material: Stainless Steel AISI 304
Unique ball locking mechanism that allows simple and rapid installation and secure locking.
Operating temperature: From -80°C to +500°C
High tensile strength.
Non-flammability.
High resistance to acetic acid, alkalis, sulphuric acid, corrosion, etc.
In general very resistant to most hostile environments.



Insert the tongue into the buckle. The internal locking ball rolls freely as the tie is tightened.



Once the correct tension is reached, use the specific tool to trim the tongue. The ball then wedges into the buckle locking it tightly against both the top and bottom of the tie.

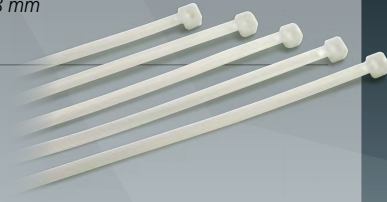


Cable Tie Tool 5313022048

Main Features

Model	Dimensions mm			Weight g
	Length	Width	Height	
5313022048	162	133	23	208

For plastic cable ties from 2.2 to 4.8 mm
Automatic cutting

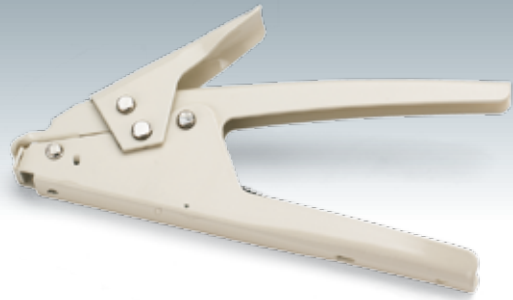


Cable Tie Tool 5523036090

Main Features

Model	Dimensions mm			Weight g
	Length	Width	Height	
5523036090	194	100	25	324

For plastic cable ties from 4.8 to 9.0 mm
Manual cutting



Cable Tie Tool 5527030079

Main Features

Model	Dimensions mm			Weight g
	Length	Width	Height	
5527030079	180	141	30	558

For stainless steel cable ties width up to 7.9 mm
With cutting device





Self adhesive cable tie bases in PA6.6

Type	Max Tie (mm)	A (mm)	B (mm)	C (mm)	H (mm)	Fixing screw hole Ø (mm)	Quantity
AB 13	2.8	13.0	13.0	3.2	3.2	-	100
AB 13N	2.8	13.0	13.0	3.2	3.2	-	100
AB 19	3.6	19.0	19.0	4.0	4.4	3.1	100
AB 19N	3.6	19.0	19.0	4.0	4.4	3.1	100
AB 28	4.8	28.0	28.0	5.3	5.7	5.5	100
AB 28N	4.8	28.0	28.0	5.3	5.7	5.5	100

Note: In Type, N = Black



Self adhesive cable clips in PA6.6

Type	Cable Ø (mm)	A (mm)	B (mm)	C (mm)	D (mm)	Quantity
CC 8.9	8-9	9.0	12.0	8.0	21.5	100
CC 9.12	9-12	12.0	15.0	8.2	21.5	100



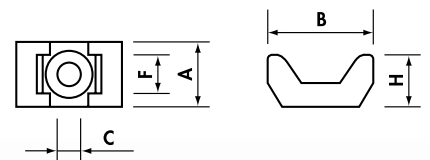
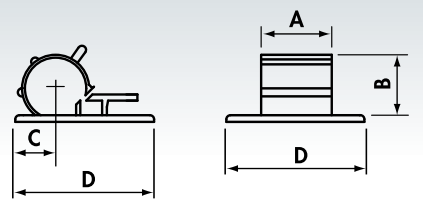
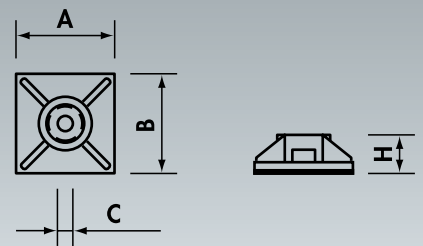
Cable tie saddle clamps in PA6.6

Type	Max Tie (mm)	A (mm)	B (mm)	C (mm)	F (mm)	H (mm)	Quantity
SS 4.8-3.7	4.8	9.5	15	3.7	5.0	7.2	100
SS 4.8-4.5	4.8	9.5	15	4.5	5.0	7.2	100
SS 9-4.5	9	16.0	22	4.5	9.2	9.7	100
SS 9-5	9	16.0	22	5.0	9.2	9.7	100
SS 9-6.4	9	16.0	22	6.4	9.2	9.7	100

AB, CC, SS series, in PA6.6 Polyamide

Main Features

Material: PA6.6 Polyamide
 Self-extinguishing V2 (UL 94)
 Humidity absorption:
 2,5% (at 50% relative humidity)
 Operating temperature:
 From -40°C to +85°C (continuous)
 From -40°C to +120°C (short periods)
 Resistant to: oils, bases, greases, oil products, chlorinated solvents.
 Colour: Natural

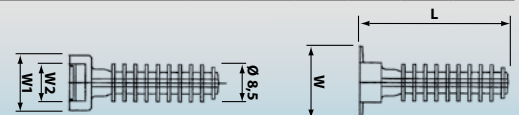


GH8 series, Stud fixing for cable ties in PA6.6

Main Features

Same features as G series.
 Push into Ø 8 mm hole.
 Cable tie inserted through slot in head.

Type	W (mm)	W1 (mm)	W2 (mm)	L (mm)	Fixing hole Ø (mm)	Quantity
GH8	20	15	10	40.5	8	100



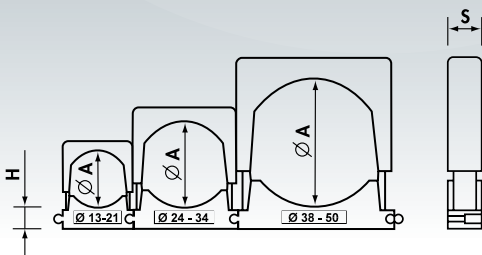
3600 series, modular retaining clips - ABS

Main Features

Material: ABS self-extinguishing class V0 (UL94) UV stabilised
 Glow wire resistance: 750° C (CEI EN 60695-2-1)
 Temperature range: -20°C to +80°C (continuous)
 Colour: Light Grey (RAL 7035)

Application: Fix SICURclip base to surface using dia. 5 - 6 mm screw (Ref. Fig. A).
 Insert cable, tubing or flexible conduit.
 Fit adjustable cover and press to secure.
 Modular SICURclips of the same or different size may easily be joined together.

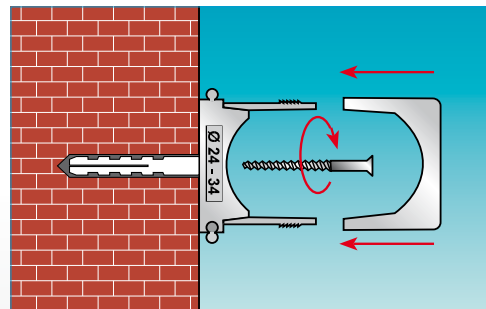
for cable, tubing & flexible conduit



Type	Ø A min-max (mm)	H (mm)	S (mm)	Quantity
3601	13-21	8.5	16	100
3602	24-34	8.5	16	50
3603	38-50	8.5	16	25



Fig. A



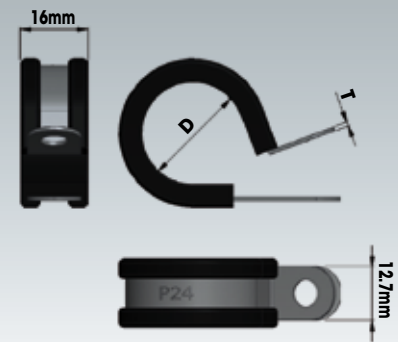


P series

Main Features

For securing cables, pipes and hoses
 Material: Zinc plated CR3 mild Steel
 Halogen-Free EPDM liner to absorb vibration, prevent chafing of conductor and inhibit moisture ingress
 Elongated lower fixing hole makes alignment easier
 Fixing holes suitable for M6 screw
 Marked with internal diameter for easy identification.

Product code	Dimensions (mm)		Marking	Quantity
	D	T		
CLIP-P4/5	4.0-5.0	0.7	P4/5	100
CLIP-P6	6.0	0.7	P6	100
CLIP-P8	8.0	0.7	P8	100
CLIP-P9	9.0	0.7	P9	100
CLIP-P10	10.0	0.7	P10	100
CLIP-P11	11.0	0.7	P11	50
CLIP-P12	12.0	0.7	P12	50
CLIP-P13	13.0	0.7	P13	50
CLIP-P14	14.0	0.7	P14	50
CLIP-P15	15.0	0.7	P15	50
CLIP-P16	16.0	0.7	P16	50
CLIP-P18	18.0	0.7	P18	50
CLIP-P19	19.0	0.7	P19	50
CLIP-P20	20.0	0.7	P20	50
CLIP-P21	21.0	0.7	P21	50
CLIP-P22	22.0	0.7	P22	50
CLIP-P23	23.0	0.7	P23	50
CLIP-P24	24.0	0.7	P24	50
CLIP-P25	25.0	0.7	P25	50
CLIP-P27	27.0	0.7	P27	50
CLIP-P29	29.0	0.7	P29	50
CLIP-P30	30.0	0.7	P30	50
CLIP-P32	32.0	0.7	P32	50
CLIP-P33	33.0	0.7	P33	25
CLIP-P35	35.0	0.9	P35	25
CLIP-P38	38.0	0.9	P38	25
CLIP-P40	40.0	0.9	P40	25
CLIP-P42	42.0	0.9	P42	25
CLIP-P44	44.0	0.9	P44	25
CLIP-P47	47.0	0.9	P47	25
CLIP-P48	48.0	0.9	P48	25
CLIP-P50	50.0	0.9	P50	25
CLIP-P53	53.0	0.9	P53	25
CLIP-P54	54.0	0.9	P54	25
CLIP-P55	55.0	0.9	P55	25
CLIP-P60	60.0	0.9	P60	10
CLIP-P64	64.0	0.9	P64	10
CLIP-P70	70.0	0.9	P70	10



Crimping Tool MLL1

Main Features

Model	Dimensions mm			Weight g
	Length	Width	Height	
MLL1	252	78	23	556

For crimping insulated terminals, 0.25 to 6.0 sqmm



Crimping Tool MLL90

Main Features

Model	Dimensions mm			Weight g
	Length	Width	Height	
MLL90	252	78	23	558

Single aperture, ratchet controlled tool for crimping female connectors, open barrel, flag type 1 to 2.5 sqmm, side insertion



Crimping Tool for RJ Plugs MLRJ1

Main Features

Model	Dimensions mm			Weight g
	Length	Width	Height	
MLRJ1	211	75	23	526

For crimping plugs RJ 11; RJ 12; RJ 14; RJ 22; RJ 45. Lever system with releasable forced locking mechanism for crimp connections conforming to standard. With cutting and wire-stripping blades. Ergonomically designed two-component handles.



Crimping Tool MLS1

Main Features

Model	Dimensions mm			Weight g
	Length	Width	Height	
MLS1	198	77	18	350

For crimping end sleeves, 0.25 to 6.0 sqmm



Crimping Tool MLS2

Main Features

Model	Dimensions mm			Weight g
	Length	Width	Height	
MLS2	198	77	18	350

For crimping end sleeves, 6.0 to 16.0 sqmm





Crimping Tool ZP2

Main Features

Model	Dimensions mm			Weight g
	Length	Width	Height	
ZP2	234	65	15	228

For crimping insulated and uninsulated connectors, 0.25 to 6.0 sqmm



Wire Stripping Tool HB5

Main Features

Model	Dimensions mm			Weight g
	Length	Width	Height	
HB5	166	55	15	134

Wire stripper, for PVC insulated cables 0.25 to 6.0 sqmm



Cutting, Crimping and Stripping Tool HB7

Main Features

Model	Dimensions mm			Weight g
	Length	Width	Height	
HB7	206	106	21	256

A versatile tool for cutting, crimping, and stripping. Range: 0.2 to 6.0 sqmm



Wire Stripping Tool HB8

Main Features

Model	Dimensions mm			Weight g
	Length	Width	Height	
HB8	175	90	22	200

Wire stripper, for PVC insulated cables 0.2 to 6.0 sqmm

The Cembre range of insulated screwdrivers have dual compound handgrips and an ergonomic design making them particularly practical and comfortable in the following modes of use:

- Normal
- Fast
- Forced

To ensure quick identification, the type and size of the head are indicated in different colours on the back of the handle.

The heads are made from Chromium Molybdenum steel with a hardness of 55-59 HRC and are hardened with Phosphoric Manganese Acid to increase corrosion resistance; the size of the insulating cover allows it to be inserted into tight spaces.

Each individual screwdriver is tested in accordance with EN 60900



Blade type identification on the back of the handle



Chromium Molybdenum steel head with hardness 55-59 HRC and anti-corrosion surface treatment

Narrow insulating cover to allow insertion into tight spaces

Soft and durable hand guard

Shaped blade for greater resistance and stability

Ergonomic and shaped hand grip

Coating in dual compound plastic material with soft rubber inserts



- Head type identification codes:
- **White** - Flat head
 - **Yellow** - "Phillips" cross head
 - **Green** - "Pozidriv" cross head
 - **Red** - "Phillips" combination head
 - **Blue** - "Pozidriv" combination head

Steel tips



Ergonomic handle



Hand guard



Attachment hole





Flat head screwdrivers



Main Features

Model	Head Dimensions mm		Blade Length mm	Total Length mm	Weight g
	Width	Thickness			
SDC 3 X 100-KV	3	0,5	100	185	32
SDC 3.5 X 100-KV	3,5	0,6	100	185	35
SDC 4 X 100-KV	4	0,8	100	205	58
SDC 5.5 X 125-KV	5,5	1,0	125	230	78
SDC 6.5 X 150-KV	6,5	1,2	150	265	115
SDC 8 X 175-KV	8	1,2	175	298	181

PH Phillips cross head screwdrivers



Main Features

Model	Head Dimensions mm		Total Length mm	Weight g
	Size	Blade Length		
SDC 0PH-KV	PH0	60	145	29
SDC 1PH-KV	PH1	80	188	64
SDC 2PH-KV	PH2	100	215	94

PZ Pozidriv cross head screwdrivers



Main Features

Model	Head Dimensions mm		Total Length mm	Weight g
	Size	Blade Length		
SDC 0PZ-KV	PZ0	60	145	29
SDC 1PZ-KV	PZ1	80	188	64
SDC 2PZ-KV	PZ2	100	215	94

PHSL Phillips combination head screwdrivers



Main Features

Model	Head Dimensions mm		Total Length mm	Weight g
	Size	Blade Length		
SDC 1PH-SL-KV	PH1 SL	80	188	65
SDC 2PH-SL-KV	PH2 SL	100	215	94

PZSL Pozidriv combination head screwdrivers



Main Features

Model	Head Dimensions mm		Total Length mm	Weight g
	Size	Blade Length		
SDC 1PZ-SL-KV	PZ1 SL	80	188	65
SDC 2PZ-SL-KV	PZ2 SL	100	215	94

Set of 7 Screwdrivers - KSDC 7 KV



Main Features

Set consists of: Model	Dimensions mm		Total Length mm	Weight g
	Head Size	Blade Length		
SDC 3 X 100-KV	3	100	185	32
SDC 4 X 100-KV	4	100	205	58
SDC 5.5 X 125-KV	5,5	125	230	78
SDC 6.5 X 150-KV	6,5	150	265	115
SDC 0PH-KV	PH0	60	145	29
SDC 1PH-KV	PH1	80	188	64
SDC 2PH-KV	PH2	100	215	94



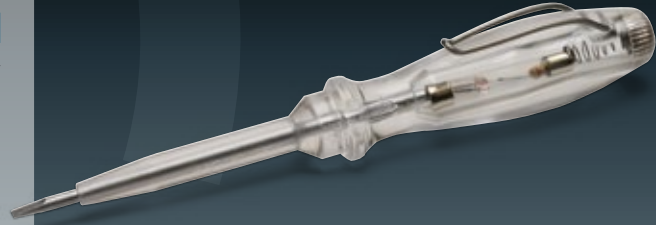
Flat head screwdriver with mains tester

Main Features

Model	Dimensions mm		Total Length mm	Weight g
	Head Size	Blade Length		
SDC 3X60-PD	3	65	153	34

A fully functioning flat head screwdriver with a completely transparent handle allowing visibility of the indicator from any angle, ensuring high safety.

- Transparent handle
- High quality head
- Ergonomic design
- Pocket clip with spring



Screwdriver with 45° angled flat head

Main Features

Model	Head Dimensions mm		Blade length mm	Total Length mm	Weight g
	Size	Thickness			
SDC 2.5 X 55 B	2,5	0,55	55	143	28
SDC 3.5 X 55 B	3,5	0,55	55	143	29

Screwdriver with angled head, ideal for terminals, sensors and actuators.



Flat head stubby screwdriver

Main Features

Model	Head Dimensions mm		Blade length mm	Total Length mm	Weight g
	Size	Thickness			
SDCS 2.5 X 55	5,5	2,5	25	75	37



Phillips cross head stubby screwdriver PH

Main Features

Model	Head Dimensions mm		Total Length mm	Weight g
	Size	Blade Length		
SDCS 1PH	PH1	25	75	38



Hex socket screwdrivers with reduced shank diameter



Main Features

Model	Dimensions Socket mm	Blade Length mm	Total Length mm	Weight g
SDC 7 X 125-HEX	7	125	243	97
SDC 8 X 125-HEX	8	125	243	114
SDC 9 X 125-HEX	9	125	243	132
SDC 10 X 125-HEX	10	125	243	152

Hex socket screwdrivers with reduced shank diameter.

- Ergonomic handgrip for comfortable use without strain.
- Reduced external shank diameter allows the tool to be used in narrow spaces (relays and switches).
- Deep point socket ideal for long threads.
- Hexagonal lever point facilitates extra force without strain.
- Standards: ISO 6750 - ISO 2236



Deep point socket



Reduced shank diameter



Universal key for switchboards UKC4

Main Features

Model	Dimensions mm			Weight g
	Length	Width	Height	
UKC4	72	72	14	92

- Universal key for switchboards
 Equipped with:
 Triangular shape 7-8 mm
 Double notch 3-5 mm
 Square shape 5-6, 7-8 mm
 Screwdriver bit and hexagonal holder



The design of MARKETline insulated pliers and the use of dual-compound plastic material in the handle cover optimise the distribution of the force over the entire surface in contact with the palm of the hand.

This leads to:

- A reduction of the effort applied
- A greater transmitted force
- Safer grip
- Prevention of injury to the fingers between the handles

As for all MARKETline insulated tools, each individual pair of pliers is tested in accordance with EN 60900



- Special steel structure particularly resistant, cutting hard wire
- Chrome surface
- Soft and resistant hand guard
- Particularly soft articulated joint
- Soft rubber inserts
- Strong and long lasting grip zone
- Extra-long cutting edge and large recess for wide cables
- Shaped and ergonomic hand grip
- Insulated handles covered in dual component plastic material

Wide and safe hand guard



Soft articulated joint



Ergonomic hand grip



Gripping and cutting edges





UPC Universal pliers

Main Features

Model	Total Length mm	Head Dimensions mm		Weight g
		Width	Thickness	
UPC 180-KV	180	27	11	287
UPC 200-KV	200	32	11,6	381

TR Nippers

Main Features

Model	Total Length mm	Head Dimensions mm		Weight g
		Width	Thickness	
TR 160-KV	160	19	10	229

TR Heavy duty nippers

Main Features

Model	Total Length mm	Head Dimensions mm		Weight g
		Width	Thickness	
TR 200-KV	200	30	13	306

SPC Straight nose pliers

Main Features

Model	Total Length mm	Head Dimensions mm		Weight g
		Width	Thickness	
SPC 200-KV	200	21,5	10,7	257

SPC 45° nose pliers

Main Features

Model	Total Length mm	Head Dimensions mm		Weight g
		Width	Thickness	
SPC 200B-KV	200	21,5	10,7	261

WPC Pipe wrench

Main Features

Model	Total Length mm	Head Dimensions mm		Weight g
		Width	Thickness	
WPC 250-KV	250	29	7,7	380

Robust-A SC5X

Professional scissors with a **Special Steel** frame for high resistance and a long life.

Extremely lightweight and robust for safe, easy handling and comfort.

Easy cutting of conductors upto 50 sqmm using the shaped grooves in each blade.

Safe and easy operation even when wearing work gloves.



Micro serrated blade



Anti-loosening pivot



Dual-compound material



Case with swivel belt hook



Robust-A



Professional Scissors SC5X

Main Features

Model	Dimensions mm			Weight g
	Length	Width	Height	
SC5X	162	77	18	121

Professional scissors with a **Special Steel frame** for high resistance and long life. Ergonomic and dual-compound plastic handles: structure in Polyamide loaded with Glass fibre and inserts of soft Rubber.

The anti-loosening pivot and bevelled profile allow the accurate and consistent alignment of the blades.

High hardness blades (58 HRC) and an anti-slip serrated edge for making precise cuts even on more difficult materials.

Shaped groove for cutting conductor up to 50 mm².

Supplied with carry case and swivel belt hook.

Professional Scissors SC3X

Main Features

Model	Dimensions mm			Weight g
	Length	Width	Height	
SC3X	150	75	20	86

Professional scissors with a serrated blade and dual-compound plastic handles with hand protection.

The anti-loosening pivot and bevelled profile allow the accurate and consistent alignment of the blades required for perfect cuts and stripping.

The high hardness of the blades (56HRC) and with their shaped grooves ensure the cutting of flexible conductors up to 35 mm².

Professional Scissors SC1

Main Features

Model	Dimensions mm			Weight g
	Length	Width	Height	
SC1	145	76	17	78

Professional scissors with ergonomic and dual-compound plastic handles.

High tensile steel blades allowing for excellent strength and performance.

Provided with specially micro-serrated blades and a robust pivot.

CW Combination Spanners

Main Features

Model	Hex mm	Open width mm	Ring width mm	Open thickness mm	Ring thickness mm	Total Length mm	weight g
CW60	6	16	10	4	5	110	15
CW70	7	17	11	4	5	120	19
CW80	8	19	13	4	6	130	24
CW100	10	23	16	5	7	150	35
CW110	11	26	17	5	7	160	47
CW130	13	30	20	6	8	180	68
CW140	14	32	21	6	9	190	79
CW150	15	34	23	6	10	200	89
CW170	17	37	26	7	10	220	124
CW180	18	39	27	7	11	230	149
CW190	19	41	28	7	11	240	166
CW220	22	47	32	8	13	270	227
CW240	24	51	35	8	14	290	293
CW270	27	56	39	9	15	320	374
CW300	30	62	43	10	15	350	475
CW320	32	66	46	10	16	370	580



- Chromium-vanadium steel tools
- Satin chrome finish.
- Ring head with 12 grip points, offset with respect to the handle to enable use in narrow spaces
- Open head tilted at 15° to reduce effort applied
- Standards: UNI ISO 3318 - ISO 7738 - DIN 3113



KCW12 Combination Spanner Set

Main Features

Model	Dimensions KIT mm			weight g
	Length	Width	Height	
KCW12	460	362	65	1140

Set includes:

KCW12:
 CW60 - CW70 - CW80 - CW100 - CW110
 CW130 - CW140 - CW150 - CW170 - CW180
 CW190 - CW220

Model	mm
CW60	6
CW70	7
CW80	8
CW100	10
CW110	11
CW130	13
CW140	14
CW150	15
CW170	17
CW180	18
CW190	19
CW220	22



KCW12

KCW16 Combination Spanner Set

Main Features

Model	Dimensions KIT mm			weight g
	Length	Width	Height	
KCW16	712	480	80	3250

Set includes:

KCW16:
 CW60 - CW70 - CW80 - CW100 - CW110
 CW130 - CW140 - CW150 - CW170 - CW180
 CW190 - CW220 - CW240 - CW270 - CW300 - CW320

Model	mm
CW60	6
CW70	7
CW80	8
CW100	10
CW110	11
CW130	13
CW140	14
CW150	15
CW170	17
CW180	18
CW190	19
CW220	22
CW240	24
CW270	27
CW300	30
CW320	32



KCW16

Combination spanners with jointed ratchet head KRK 4

Main Features

Model	Kit Dimensions mm			Weight g
	Length	Width	Height	
KRK 4	335	190	18	390

- Sizes included: 8-10-13-17 mm
- Chromium-vanadium steel
- 180° swivel head
- Ratchet mechanism with 72 teeth and recovery angle of 5°.



Socket set 1/4" drive KRS47

Main Features

Model	Dimensions KIT mm			Weight g
	Length	Width	Height	
KRS47	285	136	44	1655

- Standards: UNI ISO 3315 - DIN 3122

Metal case contains:

Qty	description
1	reversible ratchet wrench with socket retention system
2	extensions
1	articulated joint
1	T bar with sliding handle
1	screwdriver style holder
13	sockets 4 to 14 mm
4	extended sockets 8 to 13 mm
3	screwdriver sockets 4 to 6.5 mm
3	screwdriver sockets PH1, PH2, PH3
3	screwdriver sockets PZ1, PZ2, PZ3
6	hex socket spanners 3 to 8 mm
3	hex Allen keys 1.5 to 5 mm
6	torx socket keys T10 to T40





Deep hexagonal sockets 1/2" drive DSC

Main Features

Model	mm	Dimensions mm			Weight g
		Length	Ø Ext. hexagon	Ø Ext. drive	
DSC12-170L	17	77	23,8	22	120
DSC12-190L	19	77	25,7	24	134
DSC12-240L	24	77	31,8	27,8	210
DSC12-300L	30	77	39,9	34	300
DSC12-320L	32	77	41,8	35,8	336

- Chromium-vanadium steel
- Satin chrome finish
- Standards: UNI ISO 2725 - DIN 3124



1/2" Reversible ratchet wrench CRH12

Main Features

Model	Dimensions mm			Weight g
	Length	Height	Head Width	
CRH12	260	38	40	547

- Mechanism with 72 teeth and a recovery angle of 5°
- Reversible ratchet system
- Ergonomic handle in dual-compound material
- Satin chrome finish
- Chromium-vanadium steel
- Standards: UNI ISO 3315 - DIN 3122



1/2" Drive extension 250 mm long EBC12-250

Main Features

Model	Length mm	Weight g
EBC12-250	250	441

- Socket quick release system
- Chromium-vanadium steel
- Satin chrome finish
- Standards: UNI ISO 3316 - DIN 3123



1/2" Drive T bar with sliding handle STBC12-300

Main Features

Model	Dimensions mm			Weight g
	Length	Height	Head Width	
STBC12-300	300	25	24	365

- Chromium-vanadium steel
- Satin chrome finish
- Standards: UNI ISO 3315 - DIN 3122

Adjustable wrench AWC300

Main Features

Model	Dimensions mm			Weight g
	Max Opening	Length	Width	
AWC300	34	300	-	620

- Chromium-vanadium steel wrench
- Phosphate finish
- Equipped with rapid adjustment and gap size measurement scale
- Wide-opening jaws for greater adaptability



Set of 9 male Allen keys KAK 9

Main Features

Model	Kit Dimensions mm			Weight g
	Length	Width	Height	
KAK 9	300	100	31	430

- Sizes included: 1.5-2-2.5-3-4-5-6-8-10 mm
- Chromium-vanadium steel
- Long reach type
- Spherical head for use up to 30°
- Equipped with carrying case



A/F (mm)	(mm)	(mm)
1,5	78	14
2	84	16
2,5	92	18
3	102	20
4	110	24
5	123	28
6	144	32
8	163	36
10	178	40



Hammer HMR 300

Main Features

Model	Dimensions mm			Weight g
	Length	Width	Height	
HMR 300	300	104	23	300

300 g bench hammer with patented anti-vibration triple compound handle. Aluminium alloy 6082 T6 P-Al Si 1 Mg Mn head. External surface of the handle in Polyamide A2800. Thermoplastic rubber grip. Complete with handle sleeve.



Hammer HMR 500W

Main Features

Model	Dimensions mm			Weight g
	Length	Width	Height	
HMR 500W	320	106	27	500

500 g bench hammer with Ash handle. Complete with handle sleeve.



Chisel with hand protector BLC250

Main Features

Model	Dimensions mm				Weight g
	Total length	Blade width	Ø shaft	Ø handle	
BLC250	250	23	16	34	492

23 mm Chromium-vanadium steel blade with sturdy thermoplastic hand protector

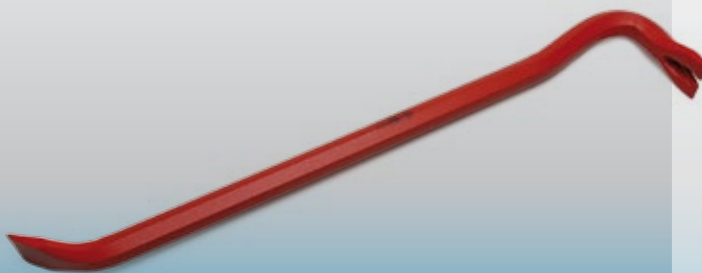


Centre Punch CPC100-8

Main Features

Model	Dimensions mm			Weight g
	Length	Tip	Hexagon	
CPC100-8	100	3	8	54

Chromium-vanadium steel with Chrome finish



Crowbar CPW 500

Main Features

Model	Dimensions mm		Weight g
	Length	Ø Hex. square	
CPW500	500	16	1183

Hexagonal section C40 steel

Retractable Cutter HB 18

Main Features

Model	Dimensions mm			Weight g
	Length	Width	Height	
HB 18	170	32	17	223

Replaceable blade, adjustable from 18 mm and internal autoloader with 5 blades. Steel blade, metal handle, with soft Rubber anti-slip coating. Safety lock for blade.



Special blade and safety lock

Hacksaw HKS 12

Main Features

Model	Dimensions mm			Weight g
	Length	Width	Height	
HKS 12	400	140	32	600

Hacksaw with 300 mm blade, dual-compound plastic frame, with soft anti-slip handle for a firm and secure grip. Tensioner in the handle.



Hacksaw HKS 6

Main Features

Model	Dimensions mm			Weight g
	Length	Width	Height	
HKS 6	270	115	20	215

Hacksaw with 150 mm blade, metal frame, with 6 adjustments of the angle of the blade. Soft Rubber anti-slip handle.



Blade BL12 HKS

BL12 HKS Spare blade for **HKS12** (5 pieces)

Blade BL6 HKS

BL6 HKS Spare blade for **HKS6** (10 pieces)



Files SFC200 - RFC200

	File Section mm	File Length mm	handle Length mm	Total Length mm	Weight g
Second-cut square file SFC200	8	200	110	310	108
	File diam. mm	File Length mm	handle Length mm	Total Length mm	Weight g
Second-cut round file RFC200	8,3	200	110	310	113

Carbide steel
Hardness 62±2 HRC





Measuring tapes FLS3 - FLS5

Main Features

Model	Tape dimensions		Casing Dimensions mm	Weight g
	Length	Width		
FLS3	3 m	16 mm	71x62x33	166
FLS5	5 m	19 mm	83x71x36	252

Professional measuring tapes with ergonomic hand grip, metal casing and rubber inserts. Tape coating in Polyamide to ensures durability, anti-friction and resistance to corrosion; with integrated magnetic hook. Automatic lock and dual locking button.



Spirit Levels LVL150 - LVL200 - LVL400

Main Features

Model	Dimensions mm		No. of tubes	Weight g
	Length	Width		
LVL150	150	22	2	105
LVL200	200	22	2	157
LVL400	400	22	2	248

Made from robust Aluminium profile, with precision 0.5 to 1 mm. Shock resistant tubes and high absorption protective caps.



Chalk line PWT 1

Main Features

Model	String length	Chalk quantity	Chalk colour	Weight Kit g
PWT 1	30 m	113 g	Blue	334

Plumb line or marker with a 30 m string. Made from dual-compound material, with shock proof protection. Wind and lock the string by the crank. String equipped with toothed attachment. Supplied with 113 g of blue chalk in a refillable container.



Chalk refill for chalk line PWS 150 B

PWS 150B colour blue – Quantity 200 g

CONICAL STEPPED DRILL-BITS

Conical stepped drill-bit SC-PG1

Main Features

Model	Hole Ø range	Steps		Drill size mm		
	mm	N°	Height mm	Length	Stem Ø	Weight g
SC-PG1	6 - 37	12	2	100	10	293

- Point geometry according to DIN 1412 C
- No pre-drilling
- Step angle 90°

SC-PG1 - Hole sizes

Step	Hole Ø mm	Clearance for PG thread
1	6.0	-
2	9.0	-
3	12.5	7
4	15.2	9
5	18.6	11
6	20.4	13.5
7	22.5	16
8	26.0	-
9	28.3	21
10	30.5	-
11	34.0	-
12	37.0	29



Conical stepped drill-bits - General characteristics

- Spiral shape facilitates quiet operation, precision of cut and removal of swarf
- Cutting capability unaffected by prolonged use
- Suitable for use on Ferrous metals and Thermoplastic materials up to 4 mm thickness
- Material: Cubic Boron Nitride (CBN)
- Corner point 118°
- Polished surface

Conical stepped drill-bit SC-M1

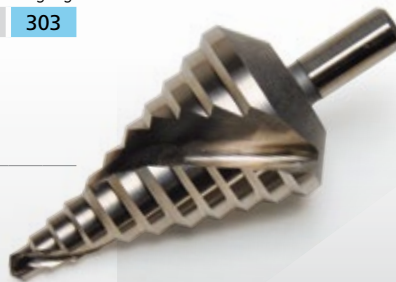
Main Features

Model	Hole Ø range	Steps		Drill size mm		
	mm	N°	Height mm	Length	Ø Stem	Weight g
SC-M1	6.5 - 40.5	11	2	96	10	303

- Point geometry according to DIN 1412 C
- No pre-drilling
- Step angle 90°

SC-M1 - Hole Sizes:

Step	Hole Ø mm	Clearance for Metric thread
1	6.5	-
2	8.5	-
3	10.5	-
4	12.5	M12
5	16.5	M16
6	20.5	M20
7	25.5	M25
8	29.0	-
9	32.5	M32
10	36.5	-
11	40.5	M40



SPIRAL DRILL-BITS
SB7-SDS-PLUS, SB-19, SB19-TIN

Set of 7 Hammer Drill-Bits SB7-SDS-PLUS

Main Features

Model

SB7-SDS-PLUS

Drill-bits with a strengthened core, to allow optimum force transmission from start to finish. Made from steel worked at a low temperature to achieve maximum resistance, and created with a spiral structure for efficient waste extraction during operation.

Suitable for rock, brick work, concrete, cement, granite, tiles and marble. Fits all hammer drills with SDS-Plus and Hilti TE 10 double-groove shanks.

Corresponding to standard: ISO 5468-DIN 8039. Weight 752 g.



Hammer Drill-bits SB7-SDS-PLUS:

Ø mm	Length mm	
	total	useable
5	110	50
6	110	50
6	160	100
8	110	50
8	160	100
10	160	100
12	160	100

Sets of 19 Spiral Drill-Bits SB19

Main Features

Model

SB19

High speed, high performance, steel spiral drill-bits.
Cross-wise sharpening allows for good balance, reducing strain during the operation.
Spiral angle: 25-30°
Groove profile: standard
Core: standard
Back angle: 118°
Point geometry: Shape C
Weight: 675 g

Main use: Steel N/mm² <900, Cast iron
Secondary use: Steel N/mm² <1100, Stainless steel, Aluminium, Brass, Bronze.

Model

SB19-TIN

As type SB19 with additional:
TiN coating to increase operating life by 300 - 400%

Spiral Drill-bits SB19:

Spiral Drill-bits SB19-TIN:

Ø mm	Length mm	
	total	useable
1	34	12
1,5	40	18
2	49	24
2,5	57	30
3	61	33
3,5	70	39
4	75	43
4,5	80	47
5	86	52
5,5	93	57
6	93	57
6,5	101	63
7	109	69
7,5	109	69
8	117	75
8,5	117	75
9	125	81
9,5	125	81
10	133	87

Cembre offers a range of tool holders designed to provide professional users with practical and neat ways to optimise their time and working conditions.

SOFT Line

Bag CTSB 1

Main Features

Model	Dimensions mm			Weight kg
	Length	Width	Height	
CTSB 1	420	250	340	3

Practical tool bag in robust fabric, with 2 separate compartments to neatly arrange hand tools. Additional equipment may be accommodated via handy hooks and external pockets while documents are safely stored inside. A shoulder strap and sturdy metal handle make it easy to carry.



SOFT Line



Bag Kit CTSB1-1

Main Features

Model	Dimensions mm			Kit Weight kg
	Length	Width	Height	
KIT CTSB 1-1	420	250	340	5,6

CTSB 1 equipped with selection of tools.

Tools contained in the kit:

Qty	item	description
1	SDC3X60-PD	mains tester
1	SDC3X100-KV	screwdriver 3x100
1	SDC3.5X100-KV	screwdriver 3,5x100
1	SDC4X100-KV	screwdriver 4x100
1	SDC5.5X125-KV	screwdriver 5,5x125
1	SDC1PH-KV	screwdriver ph1
1	SDC2PH-KV	screwdriver ph2
1	SDC1PZ-KV	screwdriver pz1
1	SDC2PZ-KV	screwdriver pz2
1	UPC180-KV	pliers 180 mm
1	SC5X	scissors SC5X
1	FLS 3	measuring tape 3m
1	KAK9	allen keys
1	HB18	retractable cutter
1	HKS6	pocket hacksaw
1	LVL150	level 150 mm
1	HMR 300	hammer

Bag Kit CTSB1-3

Main Features

Model	Dimensions mm			Kit Weight kg
	Length	Width	Height	
KIT CTSB 1-3	420	250	340	6,8

CTSB 1 equipped with selection of tools.



Tools contained in the kit:

Qty	item	description
1	SDC3X60-PD	mains tester
1	SDC3X100-KV	screwdriver 3x100
1	SDC3.5X100-KV	screwdriver 3,5x100
1	SDC4X100-KV	screwdriver 4x100
1	SDC5.5X125-KV	screwdriver 5,5x125
1	SDC1PH-KV	screwdriver ph1
1	SDC2PH-KV	screwdriver ph2
1	SDC1PZ-KV	screwdriver pz1
1	SDC2PZ-KV	screwdriver pz2
1	UPC180-KV	pliers 180 mm
1	TR160-KV	nippers 160 mm
1	SC5X	scissors SC5X
1	PTS4	wire stripper 0.2-6 mm ²
1	FLS 5	measuring tape 5 m
1	KAK9	allen keys
1	KRK4	spanners with ratchet
1	UKC4	universal key
1	HB18	retractable cutter
1	HKS6	pocket hacksaw
1	LVL150	level 150 mm
1	HMR 300	hammer

Case VAL GPTA-N

Main Features

Model	Dimensions mm			weight kg
	Length	Width	Height	
VAL GPTA-N	470	360	185	4,8

Aluminium case containing two panels with elastic tool holders and an internal pocket for holding documents or a tablet. Thermoformed base with modular dividers. Fitted with an ergonomic carrying handle and a hinged lid with stop to limit the opening to 90°. Equipped with shoulder strap.



HARD Line



Case Kit VAL GPTA-1

Main Features

Model	Dimensions mm			Kit Weight kg
	Length	Width	Height	
KIT VAL GPTA-1	470	360	185	7,4

Case VAL GPTA-N equipped with selection of tools.

Tools contained in the kit:

Qty	item	description
1	SDC3X60-PD	mains tester
1	SDC3X100-KV	screwdriver 3x100
1	SDC3.5X100-KV	screwdriver 3,5x100
1	SDC4X100-KV	screwdriver 4x100
1	SDC5.5X125-KV	screwdriver 5,5x125
1	SDC1PH-KV	screwdriver ph1
1	SDC2PH-KV	screwdriver ph2
1	SDC1PZ-KV	screwdriver pz1
1	SDC2PZ-KV	screwdriver pz2
1	UPC180-KV	pliers 180 mm
1	SC5X	scissors SC5X
1	FLS 3	measuring tape 3m
1	KAK9	allen keys
1	HB18	cutter
1	HKS6	pocket hacksaw
1	LVL150	level 150 mm
1	HMR 300	hammer

Case Kit VAL GPTA-2

Main Features

Model	Dimensions mm			Kit Weight kg
	Length	Width	Height	
KIT VAL GPTA-2	470	360	185	9,6

Case VAL GPTA-N equipped with selection of tools.

Tools contained in the kit:

Qty	item	description
1	SDC3X60-PD	mains tester
1	SDC3X100-KV	screwdriver 3x100
1	SDC3.5X100-KV	screwdriver 3,5x100
1	SDC4X100-KV	screwdriver 4x100
1	SDC5.5X125-KV	screwdriver 5,5x125
1	SDC1PH-KV	screwdriver ph1
1	SDC2PH-KV	screwdriver ph2
1	SDC1PZ-KV	screwdriver pz1
1	SDC2PZ-KV	screwdriver pz2
1	UPC180-KV	pliers 180 mm
1	TR160-KV	nippers 160 mm
1	SC5X	scissors SC5X
1	PTS4	wire stripper 0.2-6 mm ²
1	FLS 5	measuring tape 5 m
1	KAK9	allen keys
1	KRK4	spanners with ratchet
1	UKC4	universal key
1	HB18	retractable cutter
1	HKS6	pocket hacksaw
1	LVL150	level 150 mm
1	HMR 300	hammer



Trolley

Trolley TRL02

Main Features

Model	Dimensions mm				Weight kg
	Length	Width	Closed handle height	Open handle height	
TRL02	480	250	400	1023	4,3

Practical trolley mounted tool bag made of robust fabric, with 2 separate internal compartments to neatly arrange hand tools. Easy front opening access and handy hooks, external pockets providing additional space and a document pouch on the inside of the lid.



Trolley



Trolley Kit TRL02-1

Main Features

Model	Dimensions mm				Kit Weight kg
	Length	Width	Closed handle height	Open handle height	
KIT TRL02-1	480	250	400	1023	6,8

Trolley TRL02 equipped with selection of tools.

Tools contained in the kit:

Qty	item	description
1	SDC3X60-PD	mains tester
1	SDC3X100-KV	screwdriver 3x100
1	SDC3.5X100-KV	screwdriver 3,5x100
1	SDC4X100-KV	screwdriver 4x100
1	SDC5.5X125-KV	screwdriver 5,5x125
1	SDC1PH-KV	screwdriver ph1
1	SDC2PH-KV	screwdriver ph2
1	SDC1PZ-KV	screwdriver pz1
1	SDC2PZ-KV	screwdriver pz2
1	UPC180-KV	pliers 180 mm
1	SC5X	scissors SC5X
1	FLS 3	measuring tape 3m
1	KAK9	allen keys
1	HB18	cutter
1	HKS6	pocket hacksaw
1	LVL150	level 150 mm
1	HMR 300	hammer

Trolley Kit TRL02-2

Main Features

Model	Dimensions mm				Kit Weight kg
	Length	Width	Closed handle height	Open handle height	
KIT TRL02-2	480	250	400	1023	8,0

Trolley TRL02 equipped with selection of tools.

Tools contained in the kit:

Qty	item	description
1	SDC3X60-PD	mains tester
1	SDC3X100-KV	screwdriver 3x100
1	SDC3.5X100-KV	screwdriver 3,5x100
1	SDC4X100-KV	screwdriver 4x100
1	SDC5.5X125-KV	screwdriver 5,5x125
1	SDC1PH-KV	screwdriver ph1
1	SDC2PH-KV	screwdriver ph2
1	SDC1PZ-KV	screwdriver pz1
1	SDC2PZ-KV	screwdriver pz2
1	UPC180-KV	pliers 180 mm
1	TR160-KV	nippers 160 mm
1	SC5X	scissors SC5X
1	PTS4	wire stripper 0.2-6 mm ²
1	FLS 5	measuring tape 5 m
1	KAK9	allen keys
1	KRK4	spanners with ratchet
1	UKC4	universal key
1	HB18	retractable cutter
1	HKS6	pocket hacksaw
1	LVL150	level 150 mm
1	HMR 300	hammer



Chest VAL GPT

Main Features

Model	Dimensions mm			Weight kg
	Length	Width	Height	
VAL GPT	557	230	245	3,7

Plastic tool chest with small parts holder on the lid; Removable internal tool tray. Metal latches; Aluminium handle and padlock facility. Sufficiently robust to be used as a step when closed. Stackable with other VAL GPT tool chests.



Chest Kit VAL GPT-1

Main Features

Model	Dimensions mm			Chest Kit Weight kg
	Length	Width	Height	
KIT VAL GPT-1	557	230	245	5,48

VAL GPT equipped with selection of tools

Tools contained in the kit:

Qty	item	description
1	SDC3X60-PD	mains tester
1	SDC3X100-KV	screwdriver 3x100
1	SDC4X100-KV	screwdriver 4x100
1	SDC5.5X125-KV	screwdriver 5,5x125
1	SDC6.5X150-KV	screwdriver 6,5x150
1	SDC1PH-KV	screwdriver ph1
1	SDC2PH-KV	screwdriver ph2
1	TR160KV	nippers 160mm
1	SC5X	scissors SC5X
1	FLS 3	measuring tape 3m
1	HB18	cutter
1	HKS6	pocket hacksaw
1	LVL150	level 150 mm
1	HMR 300	hammer



Pouch

Pouch CTBB1

Main Features

Model	Dimensions mm			Weight g
	Length	Width	Height	
CTBB 1	230	150	50	84

Made from soft and strong fabric, equipped with a fast stud belt fastening. It has handy preformed compartments for holding pliers, scissors and screwdrivers.



Pouch Kit CTBB1-1

Main Features

Model	Dimensions mm			Pouch Kit Weight g
	Length	Width	Height	
KIT CTBB 1-1	230	150	50	477

CTBB1 equipped with selection of tools.



Tools contained in the kit:

Qty	item	description
1	SDC3X100-KV	screwdriver 3x100
1	SDC3.5X100-KV	screwdriver 3,5x100
1	SDC4X100-KV	screwdriver 4x100
1	SDC1PH-KV	screwdriver ph1
1	SDC2PH-KV	screwdriver ph2
1	SC5X	scissors SC5X



Dunton Park
Kingsbury Road, Curdworth
Sutton Coldfield - West Midlands B76 9EB UK
Tel.: 01675 470440
Fax: 01675 470220
E-mail: sales@cembre.co.uk
Web: www.cembre.co.uk



Design, manufacture and sales of electrical connectors and associated tools, cable accessories, marking systems, tooling and products for railway applications. In house repair, refurbishment and calibration of tooling.



www.cembre.co.uk