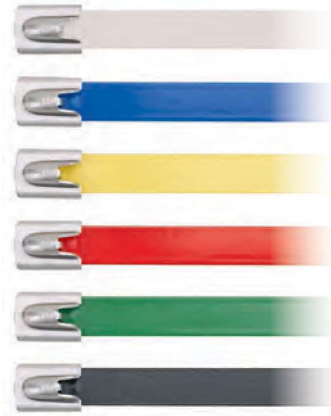


Pan-Steel® Polyester Fully Coated Cable Ties – MLTFC Series

- Polyester coating, available in six color options, provides a visual indicator for easy identification in color-coding applications (heavy cross section only)
- Self-locking head design speeds installation and locks into place at any length along the tie body
- Polyester coating provides additional edge protection and prevents corrosion between dissimilar metals
- AISI 316 stainless steel for the most corrosive environments
- Available in standard, heavy, extra-heavy, and super-heavy cross sections
- UV resistant, low smoke, halogen-free material
- Temperature tolerance -40°F (-40°C) to 302°F (150°C)



Part Number	Max. Bundle Diameter		Length*		Color	Min. Loop Tensile Strength**		Width		Thickness^		Recommended Installation Tool***	Std. Pkg. Qty.	Std. Ctn. Qty.
	In.	mm	In.	mm		Lbs.	N	In.	mm	In.	mm			

Standard Cross Section^^

MLTFC2S-CP316	2.0	51	7.9	201	Black	100	445	0.18	4.6	0.010	0.25	GS4MT-E, HTMT, PPTMT, ST2MT	100	500
MLTFC4S-CP316	4.0	102	14.3	362		100	445	0.18	4.6	0.010	0.25			
MLTFC6S-CP316	6.0	152	20.5	521		100	445	0.18	4.6	0.010	0.25			
MLTFC8S-CP316	8.0	203	26.8	679		100	445	0.18	4.6	0.010	0.25			

Heavy Cross Section^^

MLTFC2H-LP316RD	2.0	51	7.9	201	Red	250	1112	0.31	7.9	0.010	0.25	GS4MT-E, ST2MT, HTMT, PPTMT, PBTMT	50	250
MLTFC4H-LP316RD	4.0	102	14.3	362		250	1112	0.31	7.9	0.010	0.25			
MLTFC6H-LP316RD	6.0	152	20.5	521		250	1112	0.31	7.9	0.010	0.25			
MLTFC2H-LP316YL	2.0	51	7.9	201	Yellow	250	1112	0.31	7.9	0.010	0.25			
MLTFC4H-LP316YL	4.0	102	14.3	362		250	1112	0.31	7.9	0.010	0.25			
MLTFC6H-LP316YL	6.0	152	20.5	521		250	1112	0.31	7.9	0.010	0.25			
MLTFC2H-LP316GR	2.0	51	7.9	201	Green	250	1112	0.31	7.9	0.010	0.25			
MLTFC4H-LP316GR	4.0	102	14.3	362		250	1112	0.31	7.9	0.010	0.25			
MLTFC6H-LP316GR	6.0	152	20.5	521		250	1112	0.31	7.9	0.010	0.25			

Heavy Cross Section^^

MLTFC2H-LP316BU	2.0	51	7.9	201	Blue	250	1112	0.31	7.9	0.010	0.25	GS4MT-E, ST2MT, HTMT, PPTMT, PBTMT	50	250
MLTFC4H-LP316BU	4.0	102	14.3	362		250	1112	0.31	7.9	0.010	0.25			
MLTFC6H-LP316BU	6.0	152	20.5	521		250	1112	0.31	7.9	0.010	0.25			
MLTFC2H-LP316WH	2.0	51	7.9	201	White	250	1112	0.31	7.9	0.010	0.25			
MLTFC4H-LP316WH	4.0	102	14.3	362		250	1112	0.31	7.9	0.010	0.25			
MLTFC6H-LP316WH	6.0	152	20.5	521		250	1112	0.31	7.9	0.010	0.25			
MLTFC2H-LP316	2.0	51	7.9	201	Black	250	1112	0.31	7.9	0.010	0.25			
MLTFC4H-LP316	4.0	102	14.3	362		250	1112	0.31	7.9	0.010	0.25			
MLTFC6H-LP316	6.0	152	20.5	521		250	1112	0.31	7.9	0.010	0.25			
MLTFC8H-LP316	8.0	203	26.8	679		250	1112	0.31	7.9	0.010	0.25			

*Other lengths available, contact Panduit Customer Service.
 **Per SAE Standard AS23190/3 (formerly MIL). For additional details, refer to page B3.30.
 ***For information on installation tools, refer to www.panduit.com/tools.
 ^Base material less coating. ^^Minimum bundle diameter is 0.50"(12.7mm).

Continued on next page

Pan-Steel® Polyester Fully Coated Cable Ties – MLTFC Series (continued)

Part Number	Max. Bundle Diameter		Length*		Color	Min. Loop Tensile Strength**		Width		Thickness^		Recommended Installation Tool***	Std. Pkg. Qty.	Std. Ctn. Qty.
	In.	mm	In.	mm		Lbs.	N	In.	mm	In.	mm			
Extra-Heavy Cross Section^^^														
MLTFC4EH-LP316	4.0	102	17.1	434	Black	300	1335	0.50	12.7	0.010	0.25	ST2MT, RT2HT, RT2HTN, PBTMT	50	250
MLTFC6EH-LP316	6.0	152	23.4	594		300	1335	0.50	12.7	0.010	0.25			
MLTFC8EH-LP316	8.0	203	29.7	754		300	1335	0.50	12.7	0.010	0.25			
Super-Heavy Cross Section^^^														
MLTFC4SH-LP316	4.0	102	17.1	434	Black	450	2000	0.63	15.9	0.015	0.38	RT2HT, RT2HTN, PBTMT	50	250
MLTFC6SH-LP316	6.0	152	23.4	594		450	2000	0.63	15.9	0.015	0.38			
MLTFC8SH-LP316	8.0	203	29.7	754		450	2000	0.63	15.9	0.015	0.38			

*Other lengths available, contact Panduit Customer Service.
 **Per SAE Standard AS23190/3 (formerly MIL). For additional details, refer to page B3.30.
 ***For information on installation tools, refer to www.panduit.com/tools.
 ^Base material less coating. ^^Minimum bundle diameter is 0.50"(12.7mm). ^^Minimum bundle diameter is 1.0"(25.4mm).

Pan-Steel® Nylon 11 Selectively Coated Cable Ties – MLTC Series

- Self-locking head design speeds installation and locks into place at any length along the tie body
- Nylon 11 coating provides additional edge protection and prevents corrosion between dissimilar metals
- AISI 316 stainless steel for the most corrosive environments
- Available in heavy cross section
- UV resistant, low smoke, halogen-free material
- Temperature tolerance -40°F (-40°C) to 285°F (140°C)



Part Number	Max. Bundle Diameter		Length*		Min. Loop Tensile Strength**		Min. Bundle Diameter		Width		Thickness^		Recommended Installation Tool***	Std. Pkg. Qty.	Std. Ctn. Qty.
	In.	mm	In.	mm	Lbs.	N	In.	mm	In.	mm	In.	mm			
AISI 316 Stainless Steel – For Nylon 11 Selectively Coated Cable Ties															
Heavy Cross Section															
MLTC2H-LP316	2.0	51	7.9	201	250	1112	0.50	12.7	0.31	7.9	0.010	0.25	GS4MT-E, ST2MT, HTMT, PPTMT, PBTMT	50	250
MLTC4H-LP316	4.0	102	14.3	362	250	1112	0.50	12.7	0.31	7.9	0.010	0.25			
MLTC6H-LP316	6.0	152	20.5	521	250	1112	0.50	12.7	0.31	7.9	0.010	0.25			
MLTC8H-LP316	8.0	203	26.8	679	250	1112	0.50	12.7	0.31	7.9	0.010	0.25			
MLTC10H-LP316	10.0	254	33.0	838	250	1112	0.50	12.7	0.31	7.9	0.010	0.25			

*Other lengths available, contact Panduit Customer Service.
 **Per SAE Standard AS23190/3 (formerly MIL). For additional details, refer to page B3.30.
 ***For information on installation tools, refer to www.panduit.com/tools.
 ^Base material less coating.