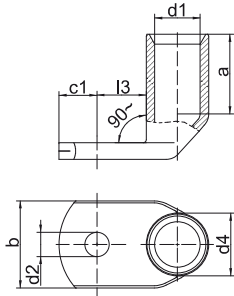


Angled tubular cable lugs, Cu, 90° angled, standard type



- ▶ For multi-stranded, round conductors e.g. to DIN EN 60228
- ▶ For pre-rounded multi-stranded sector shaped conductors
- ▶ Flat contact surface by special angle pressing technology
- ▶ In combination with the EKM 60 ID suitable for fine stranded conductors

Characteristics

- Annealed material optimises material and crimping properties
- Simple cable entry due to internal chamfer
- Item identification on cable lug

Material

- Copper (EN13600)

Surface

- Tin-plated to protect against corrosion

Technical instructions

- Tool: see page 38
- Sleeves for compacted conductors and sleeves for 3-core and 4-core cables, see chapter „Sleeves for compacted conductors and sector shaped conductors - Cu“

Additional information

- Possible as a special version with inspection hole on request.
Part Number appendix „MS“

Nominal cross section mm ²	Size of bolt dia.	Part No.	Dimension mm							Weight/ 100 pcs. ~ kg	Packing unit/pcs
			d1	a	b	d2	d4	c1	l3		
6	M5	41R5	3.5	9	10	5.3	6.5	7.5	9	0.59	50
	M6	41R6	3.5	9	12	6.3	6.5	7.5	10	0.58	50
	M8	41R8	3.5	9	14	8.4	6.5	10.0	13	0.61	50
	M10	41R10	3.5	9	17	10.5	6.5	12.0	15	0.65	50
	M12	41R12	3.5	9	19	13.0	6.5	13.0	17	0.62	50
10	M5	42R5	4.5	10	12	5.5	7.0	6.5	10	0.57	50
	M6	42R6	4.5	10	12	6.4	7.0	6.5	10	0.57	50
	M8	42R8	4.5	10	15	8.4	7.0	10.0	13	0.63	50
	M10	42R10	4.5	10	17	10.5	7.0	12.0	15	0.66	50
	M12	42R12	4.5	10	19	13.0	7.0	13.0	18	0.81	50
16	M5	43R5	5.5	13	12	5.5	8.5	7.5	10	1.01	50
	M6	43R6	5.5	13	12	6.4	8.5	7.5	11	1.01	50
	M8	43R8	5.5	13	15	8.4	8.5	10.0	13	1.08	50
	M10	43R10	5.5	13	17	10.5	8.5	12.0	15	1.09	50
	M12	43R12	5.5	13	19	13.0	8.5	13.0	18	1.15	50
25	M5	44R5	7.0	15	14	5.5	10.0	7.5	11	1.40	25
	M6	44R6	7.0	15	14	6.4	10.0	7.5	11	1.32	25
	M8	44R8	7.0	15	16	8.4	10.0	10.0	13	1.44	25
	M10	44R10	7.0	15	18	10.5	10.0	12.0	15	1.49	25
	M12	44R12	7.0	15	19	13.0	10.0	13.0	18	1.44	25
35	M14	44R14	7.0	15	21	15.0	10.0	14.5	20	1.55	25
	M6	45R6	8.5	17	17	6.4	12.0	7.5	11	2.05	25
	M8	45R8	8.5	17	17	8.4	12.0	10.0	13	2.20	25
	M10	45R10	8.5	17	19	10.5	12.0	12.0	15	2.28	25
	M12	45R12	8.5	17	21	13.0	12.0	13.0	18	2.38	25
	M14	45R14	8.5	17	21	15.0	12.0	14.5	20	2.41	25
	M16	45R16	8.5	17	26	17.0	12.0	16.0	22	2.40	25

See next page



Angled tubular cable lugs, Cu, 90° angled, standard type

Nominal cross section mm ²	Size of bolt dia.	Part No.	Dimension mm							Weight/ 100 pcs. ~ kg	Packing unit/pcs
			d1	a	b	d2	d4	c1	l3		
50	M6	46R6	10.0	19	20	6.4	14.0	10.0	13	3.34	25
	M8	46R8	10.0	19	20	8.4	14.0	10.0	13	3.28	25
	M10	46R10	10.0	19	20	10.5	14.0	12.0	16	3.47	25
	M12	46R12	10.0	19	23	13.0	14.0	13.0	18	3.42	25
	M14	46R14	10.0	19	23	15.0	14.0	14.5	20	3.55	25
	M16	46R16	10.0	19	28	17.0	14.0	16.0	22	3.58	25
	M20	46R20	10.0	19	30	21.0	14.0	19.0	24	3.15	25
70	M6	47R6	12.0	21	23	6.4	16.5	10.0	13	4.90	25
	M8	47R8	12.0	21	23	8.4	16.5	10.0	14	4.80	25
	M10	47R10	12.0	21	23	10.5	16.5	12.0	16	4.88	25
	M12	47R12	12.0	21	23	13.0	16.5	13.0	18	4.99	25
	M14	47R14	12.0	21	23	15.0	16.5	14.5	20	5.38	25
	M16	47R16	12.0	21	28	17.0	16.5	16.0	22	5.35	25
	M20	47R20	12.0	21	30	21.0	16.5	19.0	24	5.30	25
95	M8	48R8	13.5	25	26	8.4	18.0	12.0	14	5.89	25
	M10	48R10	13.5	25	26	10.5	18.0	13.0	17	5.88	25
	M12	48R12	13.5	25	26	13.0	18.0	13.0	18	5.93	25
	M14	48R14	13.5	25	26	15.0	18.0	14.5	20	6.03	25
	M16	48R16	13.5	25	28	17.0	18.0	16.0	22	6.17	25
	M20	48R20	13.5	25	36	21.0	18.0	22.0	24	6.42	25
120	M8	49R8	15.0	26	28	8.4	19.5	14.0	16	7.26	10
	M10	49R10	15.0	26	28	10.5	19.5	14.0	17	7.30	10
	M12	49R12	15.0	26	28	13.0	19.5	14.0	18	7.19	10
	M14	49R14	15.0	26	28	15.0	19.5	15.0	20	7.30	10
	M16	49R16	15.0	26	30	17.0	19.5	16.0	22	7.35	10
	M20	49R20	15.0	26	36	21.0	19.5	22.0	24	7.60	10
150	M8	50R8	16.5	30	31	8.4	21.0	14.0	16	8.41	10
	M10	50R10	16.5	30	31	10.5	21.0	14.0	17	8.27	10
	M12	50R12	16.5	30	31	13.0	21.0	15.0	18	8.34	10
	M14	50R14	16.5	30	31	15.0	21.0	15.0	20	8.52	10
	M16	50R16	16.5	30	31	17.0	21.0	16.0	22	8.62	10
	M20	50R20	16.5	30	36	21.0	21.0	22.0	24	9.10	10
185	M10	51R10	19.0	30	35	10.5	24.0	18.0	22	12.17	10
	M12	51R12	19.0	30	35	13.0	24.0	18.0	22	11.97	10
	M14	51R14	19.0	30	35	15.0	24.0	18.0	22	11.77	10
	M16	51R16	19.0	30	35	17.0	24.0	18.0	22	11.53	10
	M20	51R20	19.0	30	39	21.0	24.0	22.0	24	12.00	10
240	M10	52R10	21.0	35	39	10.5	26.0	21.5	22	15.60	10
	M12	52R12	21.0	35	39	13.0	26.0	21.5	22	15.60	10
	M14	52R14	21.0	35	39	15.0	26.0	21.5	22	15.41	10
	M16	52R16	21.0	35	39	17.0	26.0	22.0	22	15.18	10
	M20	52R20	21.0	35	39	21.0	26.0	21.5	24	14.80	10
300	M12	53R12	23.5	44	43	13.0	29.5	24.0	24	23.60	5
	M14	53R14	23.5	44	43	15.0	29.5	24.0	24	23.40	5
	M16	53R16	23.5	44	43	17.0	29.5	24.0	24	20.99	5
	M20	53R20	23.5	44	43	21.0	29.5	24.0	24	22.70	5
400	M12	54R12	27.0	44	49	13.0	34.0	24.0	24	32.53	5
	M14	54R14	27.0	44	49	15.0	34.0	24.0	24	33.40	5
	M16	54R16	27.0	44	49	17.0	34.0	24.0	24	32.60	5
	M20	54R20	27.0	44	49	21.0	34.0	24.0	24	31.80	5