

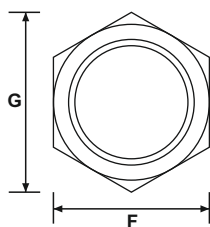
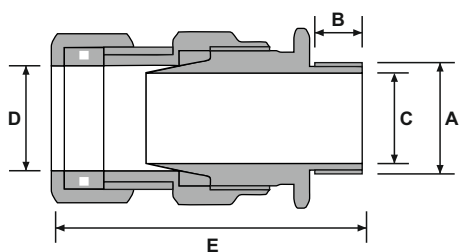
## E1WF ATEX, flameproof & weatherproof cable gland kits

E1WF double compression glands provide a controlled Ex d and IP seal on the cable inner sheath, an environmental seal on the outer sheath and a detachable armour specific clamping system for wire armoured cables. These glands have been tested to IP66 and IP68 to 50 metres. This range of glands are certified Flameproof Ex d, Increased Safety EX e, Restricted Breathing EX nR and Dust Protected Ex ta.



Part Number	Entry Thread Diameter (A)	Thread Length Minimum (B)	Cable Bedding Diameter (C)	Overall Cable Diameter (D)	Overall Gland Length (E)	Hex Size Across Flat (F)	Hex Size Across Corners (G)	Contents of each Per Kit
<b>E1WFCK16/20</b>	M20	16	8.4	13.5	74.0	24.0	26.5	2
<b>E1WFCK20S</b>	M20	16	11.7	16.0	74.0	24.0	26.5	2
<b>E1WFCK20</b>	M20	16	14.0	21.1	74.0	30.0	33.0	2
<b>E1WFCK25</b>	M25	16	20.0	27.4	74.0	38.0	41.4	2
<b>E1WFCK32</b>	M32	16	26.3	34.0	81.0	46.0	50.6	2
<b>E1WFCK40</b>	M40	16	32.2	40.6	88.0	55.0	60.5	1
<b>E1WFCK50</b>	M50	16	44.1	53.2	89.0	65.0	71.5	1
<b>E1WFCK63S</b>	M63	19	50.1	59.5	95.0	80.0	88.0	1
<b>E1WFCK63</b>	M63	19	56.0	65.8	95.0	80.0	88.0	1

All dimensions are in mm



## Technical Datasheet



### Applications

Indoor and outdoor use  
ATEX, flameproof and weatherproof  
Suitable for SWA cable  
Glands to BS6121:Part 1

### IP Rating

IP66 and IP68 to 50 metres

### Kit contents

#### E1WFCK16/20 to E1WFCK32

2 x brass glands  
2 x brass locknuts  
2 x brass earth tags  
2 x PVC shrouds  
2 x Nylon IP washer

#### E1WFCK40 to E1WFCK63

1 x brass gland  
1 x brass locknut  
1 x brass earth tag  
1 x PVC shroud  
1 x Nylon IP washer

### Approvals

Certified Flameproof Ex d,  
Increased Safety EX e,  
Restricted Breathing EX nR and  
Dust Protected Ex ta.

Suitable for Zone 1 and 2 for Gas Groups IIA, IIB and IIC and for use in Zones 20, 21 and 22 for Dust Groups IIIA, IIIB and IIIC.

Certified for Class I Zone 1 & Class I Div 2 installations for use with Marine Shipboard & Tray Cables under NEC and CEC.