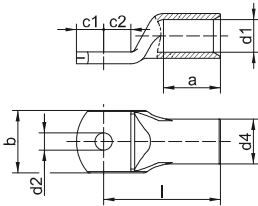




**Tubular cable lugs, Cu, standard type**



- ▶ For multi-stranded round conductors, e.g. to DIN EN 60228 Cl. 2
- ▶ For pre-rounded multi-stranded sector shaped conductors
- ▶ Ideal cable lug for control cabinet construction
- ▶ In combination with EKM 60 ID suitable for fine-stranded conductors

**Characteristics**

- Annealed material optimises material and crimping properties
- To DIN EN 61373 class 1B vibration-tested
- Simple and safe connection due to flat contact surfaces and internal chamfer
- Item identification on cable lug

**Material**

- Copper (EN13600)

**Surface**

- Tin-plated to protect against corrosion

**Technical instructions**

- Tool: see page 38
- Sleeves for compacted conductors and sleeves for 3-core and 4-core cables, see chapter „Sleeves for compacted conductors and sector shaped conductors - Cu“

**Additional information**

- Also available as featured article with inspection hole, part number appendix „MS“

| Nominal cross section mm <sup>2</sup> | Size of bolt dia. | Part No.    | Dimension mm |    |    |      |      |       |      |    | Weight/ 100 pcs. ~ kg | Packing unit/pcs |
|---------------------------------------|-------------------|-------------|--------------|----|----|------|------|-------|------|----|-----------------------|------------------|
|                                       |                   |             | d1           | a  | b  | d2   | d4   | c1    | c2   | l  |                       |                  |
| 6                                     | M5                | <b>1R5</b>  | 3.5          | 9  | 10 | 5.3  | 6.5  | 6.50  | 7.5  | 21 | 0.50                  | 100              |
|                                       | M6                | <b>1R6</b>  | 3.5          | 9  | 12 | 6.4  | 6.5  | 6.50  | 7.5  | 21 | 0.47                  | 100              |
|                                       | M8                | <b>1R8</b>  | 3.5          | 9  | 15 | 8.4  | 6.5  | 10.00 | 10.0 | 23 | 0.54                  | 100              |
|                                       | M10               | <b>1R10</b> | 3.5          | 9  | 17 | 10.5 | 6.5  | 12.00 | 12.0 | 25 | 0.59                  | 100              |
|                                       | M12               | <b>1R12</b> | 3.5          | 9  | 19 | 13.0 | 6.5  | 13.00 | 13.0 | 28 | 0.63                  | 100              |
| 10                                    | M5                | <b>2R5</b>  | 4.5          | 10 | 12 | 5.3  | 7.0  | 6.50  | 7.5  | 22 | 0.50                  | 100              |
|                                       | M6                | <b>2R6</b>  | 4.5          | 10 | 12 | 6.4  | 7.0  | 6.50  | 7.5  | 22 | 0.49                  | 100              |
|                                       | M8                | <b>2R8</b>  | 4.5          | 10 | 15 | 8.4  | 7.0  | 10.00 | 10.0 | 25 | 0.58                  | 100              |
|                                       | M10               | <b>2R10</b> | 4.5          | 10 | 17 | 10.5 | 7.0  | 12.00 | 12.0 | 27 | 0.62                  | 100              |
|                                       | M12               | <b>2R12</b> | 4.5          | 10 | 19 | 13.0 | 7.0  | 13.00 | 13.0 | 29 | 0.64                  | 100              |
| 16                                    | M5                | <b>3R5</b>  | 5.5          | 13 | 12 | 5.5  | 8.5  | 5.50  | 6.5  | 26 | 0.84                  | 100              |
|                                       | M6                | <b>3R6</b>  | 5.5          | 13 | 12 | 6.4  | 8.5  | 6.25  | 7.5  | 27 | 0.86                  | 100              |
|                                       | M8                | <b>3R8</b>  | 5.5          | 13 | 15 | 8.3  | 8.5  | 8.50  | 9.5  | 29 | 0.93                  | 100              |
|                                       | M10               | <b>3R10</b> | 5.5          | 13 | 17 | 10.5 | 8.5  | 10.50 | 11.5 | 31 | 0.99                  | 100              |
|                                       | M12               | <b>3R12</b> | 5.5          | 13 | 19 | 13.0 | 8.5  | 12.00 | 13.0 | 33 | 1.02                  | 100              |
| 25                                    | M5                | <b>4R5</b>  | 7.0          | 15 | 14 | 5.3  | 10.0 | 7.50  | 7.5  | 30 | 1.22                  | 25               |
|                                       | M6                | <b>4R6</b>  | 7.0          | 15 | 14 | 5.3  | 10.0 | 7.50  | 7.5  | 30 | 1.20                  | 100              |
|                                       | M8                | <b>4R8</b>  | 7.0          | 15 | 16 | 8.4  | 10.0 | 10.00 | 10.0 | 32 | 1.31                  | 100              |
|                                       | M10               | <b>4R10</b> | 7.0          | 15 | 18 | 10.5 | 10.0 | 12.00 | 12.0 | 34 | 1.57                  | 100              |
|                                       | M12               | <b>4R12</b> | 7.0          | 15 | 19 | 13.0 | 10.0 | 13.00 | 13.0 | 35 | 1.39                  | 25               |
| 35                                    | M14               | <b>4R14</b> | 7.0          | 15 | 21 | 15.0 | 10.0 | 14.50 | 14.5 | 38 | 1.49                  | 25               |
|                                       | M6                | <b>5R6</b>  | 8.5          | 17 | 17 | 6.4  | 12.0 | 7.50  | 7.5  | 32 | 1.85                  | 100              |
|                                       | M8                | <b>5R8</b>  | 8.5          | 17 | 17 | 8.4  | 12.0 | 10.00 | 10.0 | 34 | 2.00                  | 100              |
|                                       | M10               | <b>5R10</b> | 8.5          | 17 | 19 | 10.5 | 12.0 | 12.00 | 12.0 | 37 | 2.13                  | 100              |
|                                       | M12               | <b>5R12</b> | 8.5          | 17 | 21 | 13.0 | 12.0 | 13.00 | 13.0 | 38 | 2.12                  | 100              |
|                                       | M14               | <b>5R14</b> | 8.5          | 17 | 21 | 15.0 | 12.0 | 14.50 | 14.5 | 40 | 2.18                  | 25               |
|                                       | M16               | <b>5R16</b> | 8.5          | 17 | 26 | 17.0 | 12.0 | 16.00 | 16.0 | 42 | 2.24                  | 25               |

See next page

### Tubular cable lugs, Cu, standard type

| Nominal cross section mm <sup>2</sup> | Size of bolt dia. | Part No.     | Dimension mm |    |      |      |       |       |      |       | Weight/ 100 pcs. ~ kg | Packing unit/pcs |
|---------------------------------------|-------------------|--------------|--------------|----|------|------|-------|-------|------|-------|-----------------------|------------------|
|                                       |                   |              | d1           | a  | b    | d2   | d4    | c1    | c2   | l     |                       |                  |
| 50                                    | M6                | <b>6R6</b>   | 10.0         | 19 | 20   | 6.4  | 14.0  | 10.00 | 10.0 | 37    | 3.00                  | 25               |
|                                       | M8                | <b>6R8</b>   | 10.0         | 19 | 20   | 8.4  | 14.0  | 10.00 | 10.0 | 37    | 2.93                  | 50               |
|                                       | M10               | <b>6R10</b>  | 10.0         | 19 | 20   | 10.5 | 14.0  | 12.00 | 12.0 | 39    | 3.08                  | 50               |
|                                       | M12               | <b>6R12</b>  | 10.0         | 19 | 23   | 13.0 | 14.0  | 13.00 | 13.0 | 43    | 3.23                  | 50               |
|                                       | M14               | <b>6R14</b>  | 10.0         | 19 | 23   | 15.0 | 14.0  | 14.50 | 14.5 | 45    | 3.32                  | 25               |
|                                       | M16               | <b>6R16</b>  | 10.0         | 19 | 28   | 17.0 | 14.0  | 16.00 | 16.0 | 46    | 3.38                  | 25               |
|                                       | M20               | <b>6R20</b>  | 10.0         | 19 | 30   | 21.0 | 14.0  | 19.00 | 19.0 | 48    | 3.46                  | 25               |
| 70                                    | M6                | <b>7R6</b>   | 12.0         | 21 | 23   | 6.4  | 16.5  | 10.00 | 10.0 | 43    | 4.49                  | 25               |
|                                       | M8                | <b>7R8</b>   | 12.0         | 21 | 23   | 8.5  | 16.5  | 10.00 | 10.0 | 43    | 4.38                  | 50               |
|                                       | M10               | <b>7R10</b>  | 12.0         | 21 | 23   | 10.5 | 16.5  | 12.00 | 12.0 | 44    | 4.54                  | 50               |
|                                       | M12               | <b>7R12</b>  | 12.0         | 21 | 23   | 13.0 | 16.5  | 13.00 | 13.0 | 46    | 4.63                  | 50               |
|                                       | M14               | <b>7R14</b>  | 12.0         | 21 | 23   | 15.0 | 16.5  | 14.50 | 14.5 | 48    | 4.76                  | 25               |
|                                       | M16               | <b>7R16</b>  | 12.0         | 21 | 28   | 17.0 | 16.5  | 16.00 | 16.0 | 50    | 4.24                  | 25               |
|                                       | M20               | <b>7R20</b>  | 12.0         | 21 | 30   | 21.0 | 16.5  | 19.00 | 19.0 | 53    | 5.09                  | 25               |
| 95                                    | M8                | <b>8R8</b>   | 13.5         | 25 | 26   | 8.4  | 18.0  | 12.00 | 12.0 | 48    | 5.44                  | 25               |
|                                       | M10               | <b>8R10</b>  | 13.5         | 25 | 26   | 10.5 | 18.0  | 12.00 | 12.0 | 48    | 5.40                  | 50               |
|                                       | M12               | <b>8R12</b>  | 13.5         | 25 | 26   | 13.0 | 18.0  | 13.00 | 13.0 | 49    | 5.56                  | 50               |
|                                       | M14               | <b>8R14</b>  | 13.5         | 25 | 26   | 15.0 | 18.0  | 14.50 | 14.5 | 51    | 5.62                  | 25               |
|                                       | M16               | <b>8R16</b>  | 13.5         | 25 | 28   | 17.0 | 18.0  | 16.00 | 16.0 | 54    | 5.82                  | 50               |
|                                       | M20               | <b>8R20</b>  | 13.5         | 25 | 36   | 21.0 | 18.0  | 22.00 | 22.0 | 60    | 6.71                  | 25               |
| 120                                   | M8                | <b>9R8</b>   | 15.0         | 26 | 28   | 8.4  | 19.5  | 14.00 | 14.0 | 51    | 6.72                  | 25               |
|                                       | M10               | <b>9R10</b>  | 15.0         | 26 | 28   | 10.5 | 19.5  | 14.00 | 14.0 | 51    | 6.57                  | 50               |
|                                       | M12               | <b>9R12</b>  | 15.0         | 26 | 28   | 13.0 | 19.5  | 14.00 | 14.0 | 51    | 6.38                  | 50               |
|                                       | M14               | <b>9R14</b>  | 15.0         | 26 | 28   | 15.0 | 19.5  | 15.00 | 15.0 | 52    | 6.45                  | 25               |
|                                       | M16               | <b>9R16</b>  | 15.0         | 26 | 30   | 17.0 | 19.5  | 16.00 | 16.0 | 54    | 6.51                  | 50               |
|                                       | M20               | <b>9R20</b>  | 15.0         | 26 | 36   | 21.0 | 19.5  | 22.00 | 22.0 | 63    | 7.74                  | 25               |
| 150                                   | M8                | <b>10R8</b>  | 16.5         | 30 | 31   | 8.5  | 21.0  | 14.00 | 14.0 | 56    | 7.78                  | 10               |
|                                       | M10               | <b>10R10</b> | 16.5         | 30 | 31   | 10.5 | 21.0  | 14.00 | 14.0 | 56    | 7.62                  | 10               |
|                                       | M12               | <b>10R12</b> | 16.5         | 30 | 31   | 13.0 | 21.0  | 15.00 | 15.0 | 57    | 7.73                  | 25               |
|                                       | M14               | <b>10R14</b> | 16.5         | 30 | 31   | 15.0 | 21.0  | 15.00 | 15.0 | 57    | 7.64                  | 10               |
|                                       | M16               | <b>10R16</b> | 16.5         | 30 | 31   | 17.0 | 21.0  | 16.00 | 16.0 | 58    | 7.53                  | 10               |
|                                       | M20               | <b>10R20</b> | 16.5         | 30 | 36   | 21.0 | 21.0  | 22.00 | 22.0 | 66    | 8.80                  | 10               |
| 185                                   | M10               | <b>11R10</b> | 19.0         | 30 | 35   | 10.5 | 24.0  | 18.00 | 18.0 | 65    | 11.75                 | 10               |
|                                       | M12               | <b>11R12</b> | 19.0         | 30 | 35   | 13.0 | 24.0  | 18.00 | 18.0 | 65    | 11.82                 | 10               |
|                                       | M14               | <b>11R14</b> | 19.0         | 30 | 35   | 15.0 | 24.0  | 18.00 | 18.0 | 65    | 11.39                 | 10               |
|                                       | M16               | <b>11R16</b> | 19.0         | 30 | 35   | 17.0 | 24.0  | 18.00 | 18.0 | 65    | 11.24                 | 25               |
|                                       | M20               | <b>11R20</b> | 19.0         | 30 | 39   | 21.0 | 24.0  | 22.00 | 22.0 | 69    | 12.00                 | 10               |
| 240                                   | M10               | <b>12R10</b> | 21.0         | 35 | 39   | 10.5 | 26.0  | 21.50 | 19.0 | 72    | 14.72                 | 10               |
|                                       | M12               | <b>12R12</b> | 21.0         | 35 | 39   | 13.0 | 26.0  | 21.50 | 19.0 | 72    | 14.55                 | 10               |
|                                       | M14               | <b>12R14</b> | 21.0         | 35 | 39   | 15.0 | 26.0  | 21.50 | 19.0 | 72    | 14.24                 | 10               |
|                                       | M16               | <b>12R16</b> | 21.0         | 35 | 39   | 17.0 | 26.0  | 21.50 | 19.0 | 72    | 14.09                 | 25               |
|                                       | M20               | <b>12R20</b> | 21.0         | 35 | 39   | 21.0 | 26.0  | 21.50 | 19.0 | 72    | 13.60                 | 10               |
| 300                                   | M12               | <b>13R12</b> | 23.5         | 44 | 43   | 13.0 | 29.5  | 24.00 | 24.0 | 87    | 23.33                 | 5                |
|                                       | M14               | <b>13R14</b> | 23.5         | 44 | 43   | 15.0 | 29.5  | 24.00 | 24.0 | 87    | 23.14                 | 5                |
|                                       | M16               | <b>13R16</b> | 23.5         | 44 | 43   | 17.0 | 29.5  | 24.00 | 24.0 | 87    | 22.74                 | 5                |
| 400                                   | M20               | <b>13R20</b> | 23.5         | 44 | 43   | 21.0 | 29.5  | 24.00 | 24.0 | 87    | 22.19                 | 5                |
|                                       | M12               | <b>14R12</b> | 27.0         | 44 | 49   | 13.0 | 34.0  | 24.00 | 24.0 | 90    | 32.41                 | 5                |
|                                       | M14               | <b>14R14</b> | 27.0         | 44 | 49   | 15.0 | 34.0  | 24.00 | 24.0 | 90    | 32.24                 | 5                |
|                                       | M16               | <b>14R16</b> | 27.0         | 44 | 49   | 17.0 | 34.0  | 24.00 | 24.0 | 90    | 31.98                 | 5                |
| M20                                   | <b>14R20</b>      | 27.0         | 44           | 49 | 21.0 | 34.0 | 24.00 | 24.0  | 90   | 31.41 | 5                     |                  |