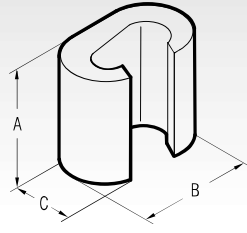


SLEEVE CONNECTORS

for Copper conductors



C-C



tin plated version

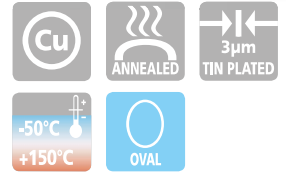
Conductor Size sqmm		Type	Dimensions mm			Quantity Box/Bag	Mechanical Tools	Hydraulic Tools					
Run	Tap		A	B	C			HT45-E	B450ND-BVE	B500NDE	HT81-U	RHU81	
6÷2,5	6÷1,5	C6-C6ST*	9,0	9,8	6,4	1.000/100	HP4-C10	HT45-E	B450ND-BVE	B500NDE	HT81-U	RHU81	ECW-H3D
10	10÷1,5	C10-C10ST*	12,0	12,6	8,4	500/100							
16	16÷1,5	C16-C16ST	17,0	19,4	12,0	500/100							
25÷16	10÷1,5	C25-C10ST	17,0	19,8	13,0	400/50							
25	25÷16	C25-C25ST	17,0	21,4	13,0	300/50							
40÷35	16÷1,5	C35-C16ST	21,0	24,6	15,4	200/25							
40÷35	40÷25	C35-C35ST	21,0	26,6	15,6	200/25							
50	25÷10												
70÷63	25÷1,5	C70-C25NST	21,0	26,4	17,5	200/25							
50	25÷4	C50-C25ST	25,0	32,9	21,0	100/25							
50	50÷35	C50-C50ST	26,0	33,0	21,0	100/25							
70÷50	40÷4	C70-C35ST	28,0	33,0	21,0	100/25							
70÷50	70÷35	C70-C70ST	28,0	34,0	21,0	100/25							
100÷95	40÷4	C95-C35ST	29,0	40,6	26,0	50/25							
100÷95	70÷40	C95-C70ST	29,0	41,0	26,0	50/25							
100÷95	100÷63	C95-C95ST	29,0	41,0	26,0	50/25							
125÷110	125÷25	C120-C120ST	30,0	45,0	28,0	50/25							
160÷150	125÷25	C150-C120ST	31,0	45,0	28,0	50/25							
125	125												
150	150÷63	C150-C150ST	30,0	45,0	28,0	50/25							
125	125												
185	100÷16	C185-C95ST	31,0	45,0	28,0	50/25							
185÷120	185÷120	C185-C185ST	22,6	68,0	34,0	30/15							
240÷150	120÷95	C240-C120ST	22,6	68,0	34,0	30/15							

*Given the small size, on these connectors, only the type is engraved

bright surface version

Conductor Size sqmm		Type	Dimensions mm			Quantity Box/Bag	Mechanical Tools	Hydraulic Tools					
Run	Tap		A	B	C			HT45-E	B450ND-BVE	B500NDE	HT81-U	RHU81	
6÷2,5	6÷1,5	C6-C6*	9,0	9,8	6,4	1.000/100	HP4-C10	HT45-E	B450ND-BVE	B500NDE	HT81-U	RHU81	ECW-H3D
10	10÷1,5	C10-C10*	12,0	12,6	8,4	500/100							
16	16÷1,5	C16-C16	17,0	19,4	12,0	500/100							
25÷16	10÷1,5	C25-C10	17,0	19,8	13,0	400/50							
25	25÷16	C25-C25	17,0	21,4	13,0	300/50							
40÷35	16÷1,5	C35-C16	21,0	24,6	15,4	200/25							
40÷35	40÷25	C35-C35	21,0	26,6	15,6	200/25							
50	25÷10												
70÷63	25÷1,5	C70-C25N	21,0	26,4	17,5	200/25							
50	25÷4	C50-C25	25,0	32,9	21,0	100/25							
50	50÷35	C50-C50	26,0	33,0	21,0	100/25							
70÷50	40÷4	C70-C35	28,0	33,0	21,0	100/25							
70÷50	70÷35	C70-C70	28,0	34,0	21,0	100/25							
100÷95	40÷4	C95-C35	29,0	40,6	26,0	50/25							
100÷95	70÷40	C95-C70	29,0	41,0	26,0	50/25							
100÷95	100÷63	C95-C95	29,0	41,0	26,0	50/25							
125÷110	125÷25	C120-C120	30,0	45,0	28,0	50/25							
160÷150	125÷25	C150-C120	31,0	45,0	28,0	50/25							
125	125												
150	150÷63	C150-C150	30,0	45,0	28,0	50/25							
125	125												
185	100÷16	C185-C95	31,0	45,0	28,0	50/25							
185÷120	185÷120	C185-C185	22,6	68,0	34,0	30/15							
240÷150	120÷95	C240-C120	22,6	68,0	34,0	30/15							

*Given the small size, on these connectors, only the type is engraved



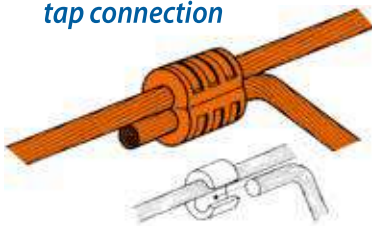
"C" connectors are manufactured from high purity copper profiles and are suitable for a variety of uses either to create an earthing network or tapping off from overhead distribution lines.

Each connector is marked as follows:

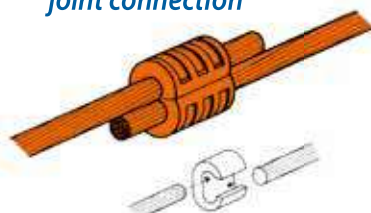
- Cembre trade mark
- Reference number
- Conductor size-Run
- Conductor size-Tap
- Number of crimps
- Die reference.

Details of the appropriate crimping tools and dies are shown on page 212.

Example of tap connection



Example of joint connection



Example of joining two running conductors

Sezione Conduttore mm²	Type
25-25	C35-C16
35-35	C35-C35
50-50	C70-C70
63-63	C95-C70
70-70	
95-95	C150-C120
120-120	C150-C150
120-120	C185-C95
125-125	

