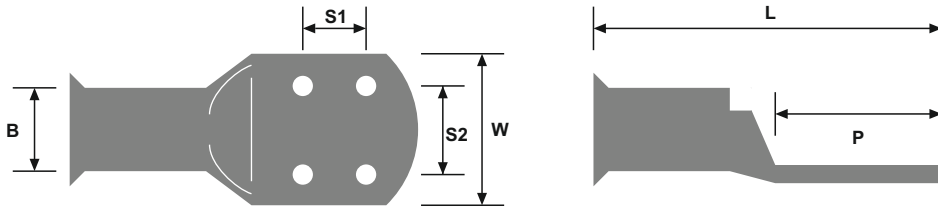


## Copper Tube 4 hole transformer terminals

With a 4 x M8 stud fixing these transformer lugs are suitable for use with termination connections requiring holes with 25 x 35mm centres, found on the most common transformers. Manufactured from high grade electro tin plated copper tube and with a flared entry barrel to allow flexible and stranded cables to be inserted with ease.



Part Number	Wire Size (mm <sup>2</sup> )	Pack Size (pcs)	Stud Size	Stud Centres (S1)	Stud Centres (S2)	Barrel Dia. (B)	Palm Width (W)	Palm Length (P)	Total Length (L)
<b>ETL185-4</b>	185	1	4 x M8	25	35	18.5	34.0	34.0	78.0
<b>ETL240-4</b>	240	1	4 x M8	25	35	21.0	38.0	40.0	92.0
<b>ETL300-4</b>	300	1	4 x M8	25	35	23.0	41.0	40.0	97.0
<b>ETL400-4</b>	400	1	4 x M8	25	35	27.0	48.0	44.0	108.0
<b>ETL500-4</b>	500	1	4 x M8	25	35	30.0	53.5	56.5	124.0
<b>ETL630-4</b>	630	1	4 x M8	25	35	33.5	61.0	60.0	144.0

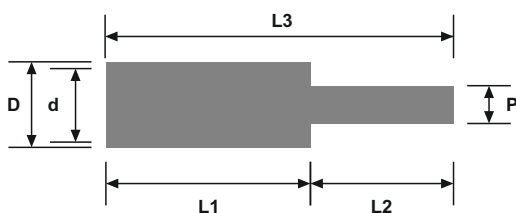


## Copper Tube pin terminals

The pin makes these copper tube terminals suitable for terminating into contact blocks. Manufactured from high grade electro tin plated copper tube. Internal barrel diameters are designed to suit standard cables sizes cables allowing cables to be inserted with ease.



Part Number	Wire Size (mm <sup>2</sup> )	Pack Size (pcs)	Barrel Ext Dia. (D)	Barrel Int Dia. (d)	Pin Dia. (P)	Barrel Length (L1)	Pin Length (L2)	Total Length (L3)
<b>ECP10</b>	10	10	6.0	4.2	2.8	13.2	10.2	23.4
<b>ECP16</b>	16	10	7.0	5.3	3.7	16.6	13.6	30.2
<b>ECP25</b>	25	10	9.0	7.0	4.8	19.5	18.5	38.0
<b>ECP35</b>	35	10	10.0	8.0	5.0	21.5	18.5	40.0
<b>ECP50</b>	50	10	11.5	9.5	7.3	21.3	19.0	40.3
<b>ECP70</b>	70	10	16.0	11.5	7.4	28.5	17.7	46.2
<b>ECP95</b>	95	10	17.0	13.2	7.5	27.5	18.4	45.9
<b>ECP120</b>	120	5	19.0	15.2	9.8	30.0	24.6	54.6
<b>ECP150</b>	150	3	22.0	17.0	10.0	32.0	24.0	56.0
<b>ECP185</b>	185	2	25.3	18.0	12.0	35.7	24.8	60.5
<b>ECP240</b>	240	2	26.5	22.3	15.7	46.0	32.1	78.1
<b>ECP300</b>	300	1	28.7	24.0	15.6	50.4	32.0	82.4
<b>ECP400</b>	400	1	32.2	27.2	15.9	53.4	32.1	85.5



## Technical Data



### Material

Body : Copper

Plating : Bright electro tin

### Features

Bell mouth for easy cable entry

Excellent conductivity

Corrosion resistant

Suitable for heavy duty applications

Capatible with most transformer

Four hole lug design

Suits most transformer fixings

## Technical Data



### Material

Body : Copper

Plating : Bright electro tin

### Features

Cable range : 10mm<sup>2</sup> to 400mm<sup>2</sup>

Designed to suit standard cables sizes

Suitable for heavy duty applications

For terminating into contact blocks

Excellent conductivity

Corrosion resistant