

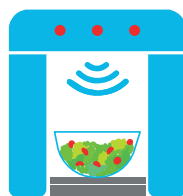


**CEMBRE**

MARKING SYSTEMS  
DETECTABLE BY X-RAY AND METAL DETECTORS



## **SAFETY EVERYWHERE. ESPECIALLY IN THE PRODUCTION PROCESS**



In some industrial sectors, such as food & beverage, pharmaceuticals and cosmetics, the production processes must guarantee very high levels of product

quality for the safety of the end user. For this reason, each stage of production must be carefully controlled to prevent the finished product from being contaminated by foreign bodies.

## **CEMBRE METAL DETECTABLE TAGS**

CEMBRE offers a range of tags and tag holders (**Metal Detectable, MD**) for industrial labelling, produced using a specific additive easily **detectable by metal detectors and X-rays**, which guarantees high resistance to oxidation. These tags are traced by the special equipment positioned along the production process in case of an accidental contamination.



# MG4



## MG4 THE NEW GENERATION THERMAL TRANSFER PRINTER FOR SHEET MEDIA

Markingenius®MG4 is an industrial labelling printer designed to offer **very high and long-lasting print quality**.

### ALWAYS CONNECTED!

Connection to the company network via **USB, LAN** and also **Wi-Fi** or, in the absence of a network, to mobile and fixed devices via **Wi-Fi direct**.

### ONE BATTERY, MANY TOOLS!



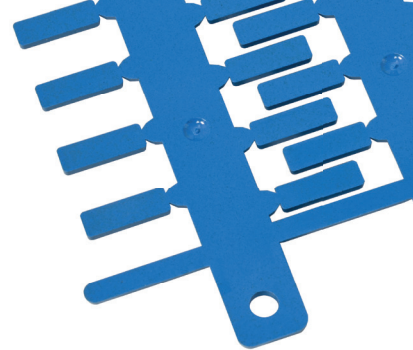
Power supply from the mains or using a rechargeable lithium ion battery, common to the CEMBRE 18V tools, means it can be used directly in front of the panel to be wired.

### FLEXIBLE OPERATION!

#### Geniuspro Mobile APP

developed by CEMBRE for IOS and Android devices (smartphones and tablets) for the latest changes on site on the electrical panel or on board the machine.





## A TOOL THAT ENSURES COMPLIANCE WITH STANDARDS

This solution adopted in the food, pharmaceuticals or cosmetic fields ensures the process is compliant with **HACCP** regulations.

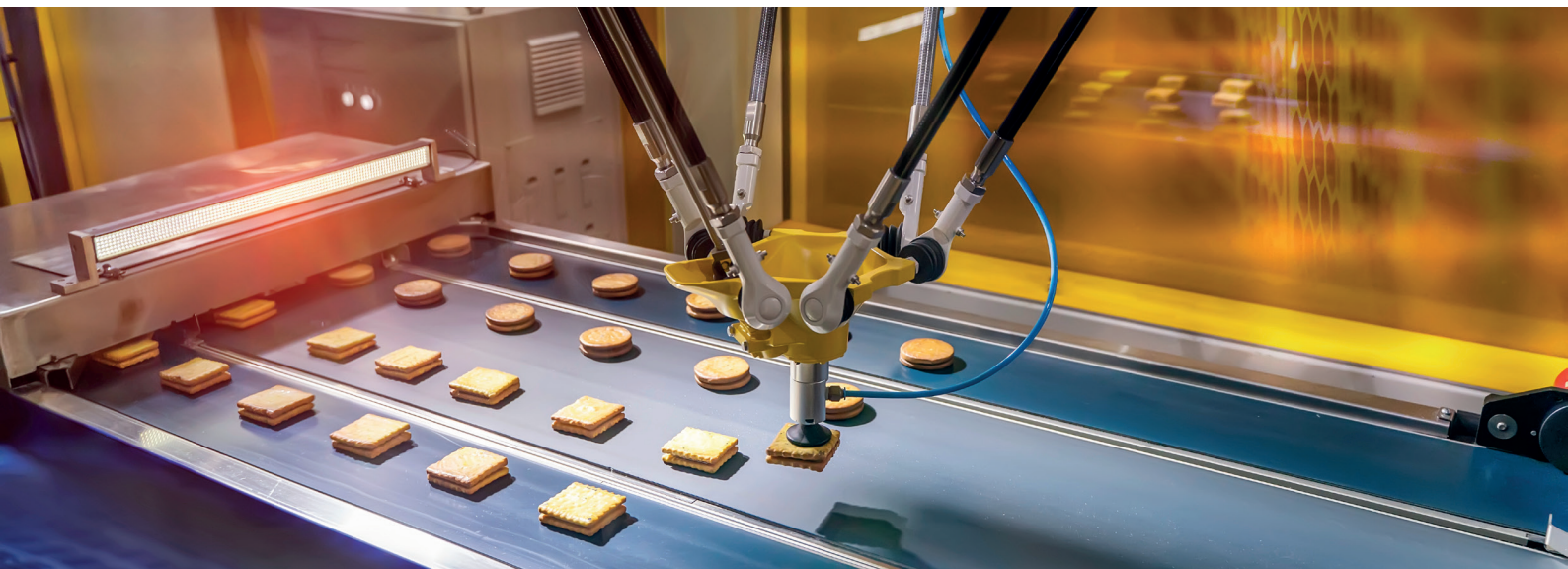
The compound from which the tags are made meets the EU 10/2011 and FDA requirements for food contact.

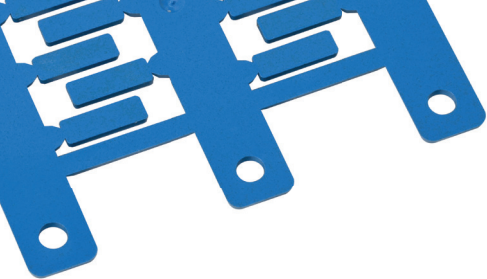


## CABLE TAGS

Tags produced in metal detectable material, printable via thermal transfer printers, which can be inserted into transparent holders, used with cable ties or applied directly to the cable.

on sheet	type	size mm	used with
MG-TPM-MD	<b>40060-MD</b>	4x10	transparent tag holders PM
	<b>40061-MD</b>	4x12	
	<b>40062-MD</b>	4x15	
MG-TDM-01-MD	<b>40160-MD</b>	4x12	directly on the cable
MG-TDM-02-MD	<b>40260-MD</b>	4x12	
on roll	type	size mm	used with
ETF-ROLL-MD	<b>43160</b>	12x60	tie
	<b>43168</b>	20x30	





## TERMINAL MARKER TAGS



Tags produced in metal detectable material, printable by thermal transfer printers which can be applied to third-party terminal blocks.

on sheet	type	size		used with
		mm	shape	
MG-CPM-01-MD	<b>41062-MD</b>	3x10	S	most widely used products
	<b>41064-MD</b>	5x7	S	
	<b>41068-MD</b>	5x10	M	
	<b>41065-MD</b>	6x10	M	
MG-CPM-02-MD	<b>41160N-MD</b>	5x10	S	
MG-CPM-03-MD	<b>41261-MD</b>	5x10	S	
	<b>41263-MD</b>	5x10	M	
MG-CPM-04-MD	<b>41362-MD</b>	3x10	S	
	<b>41365-MD</b>	5x10	M	
	<b>41361-MD</b>	6x10	M	
	<b>41366-MD</b>	8x10	M	
MG-CPM-05-MD	<b>41460-MD</b>	5x10	S	
MG-CPM-06-MD	<b>41561-MD</b>	5x10	S	
MG-CPM-07-MD	<b>41661-MD</b>	5x10	S	
MG-CPM-09-MD	<b>41860-MD</b>	5x10	MF	
MG-CPM-10-MD	<b>46162-MD</b>	5x12	S	
MG-CPM-11-MD	<b>46362-MD</b>	6x12	S	
MG-CPM-12-MD	<b>46360-MD</b>	4,2x9	MF	
MG-CPM-13-MD	<b>41760-MD</b>	5x12	M	
	<b>41761-MD</b>	6x12	M	
MG-CPM-15-MD	<b>42608-MD</b>	5x5	M	

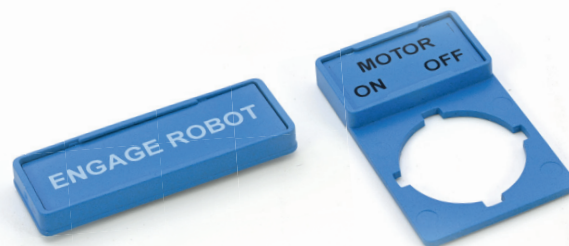
## TAGS FOR BUTTONS AND COMPONENTS

Tags produced in metal detectable material, printable by thermal transfer printers which can be inserted into transparent holders.

on sheet	type	size mm	used with
MG-TAP-R-MD	<b>37064-MD</b>	15x27	legend bases
	<b>37065-MD</b>	15x49	

Push button holders suitable for 22.5 mm push buttons on third party models and panel tag holders for labelling other equipment components.

accessories	type	size mm	adhesive	rivetable
PTPS-22-MD	<b>34062-MD</b>	17x30		✓
PTPSA-22-MD	<b>34662-MD</b>	17x30	✓	
PLR-MD	<b>34362-MD</b>	17x30		✓
	<b>34462-MD</b>	17x52		✓
PLA-MD	<b>35162N-MD</b>	17x30	✓	
	<b>35262N-MD</b>	17x52	✓	



Cod. 6263015



[www.cembre.com](http://www.cembre.com)



**CEMBRE S.p.A.**  
via Serenissima, 9  
25135 Brescia  
Italy  
Ph +39 030 36921  
ufficio.vendite@cembre.com  
sales@cembre.com

**CEMBRE Ltd.**  
Dunton Park,  
Kingsbury Road,  
Curdworth, Sutton Coldfield,  
West Midlands, B76 9EB  
United Kingdom  
Ph +44 01675 470440  
sales@cembre.co.uk

**CEMBRE S.a.r.l.**  
22 Avenue Ferdinand  
de Lesseps  
91420 Morangis Cedex  
France  
Ph +33 01 60 49 11 90  
info@cembre.fr

**CEMBRE España S.L.U.**  
Calle Verano 4 y 8  
Pl Las Morjas  
28850 Torrejón de Ardoz  
Madrid - Spain  
Ph +34 91 4852580  
comercial@cembre.es

**CEMBRE GmbH**  
Geschäftsbereich  
Energie- und Bahntechnik  
Heidemannstr. 166  
80939 München  
Germany  
Ph +49 89-3580676  
info@cembre.de

**CEMBRE GmbH**  
Geschäftsbereich  
Industrie und Handel  
Boschstraße 7  
71384 Weinstadt  
Germany  
Ph +49 7151-20536-60  
info-w@cembre.de

**CEMBRE Inc.**  
Raritan Center Business Park  
300 Columbus Circle-S.F.,  
Edison, NJ 08837 USA  
Ph +1 (732) 225-7415  
sales.us@cembre.com  
**Midwest Office**  
1051 Perimeter Dr #470  
Schaumburg, IL 60173

