

ORGANIZE, DIRECT & PROTECT

With Floor Marking, Wayfinding, and Safety Tape

GraphicProducts.com
888-637-3893



Reflective Tape
PAGE 8

Print
PAGE 4



Aisle Tape
PAGE 3

SAFETY

IT'S YOUR CHOICE

Make the right one with Graphic Products' full line of safety solutions



Ordering

We're here to help you meet your safety and visual communication challenges in any way possible. Call us, email us, or visit us online for a live chat. Let us know what you're up against, and we'll find a solution.



PHONE

Call **888-637-3893** to speak with one of our knowledgeable representatives to assist in finding the right equipment and supplies for your specific needs.



WEB

Looking to browse our products?

Visit **GraphicProducts.com** for more details on any of our products. Add desired items for purchase to your cart and proceed to checkout.



MAIL

Send PO to:
Graphic Products, Inc.
P.O. Box 4030
Beaverton, OR 97076-4030

Email:
info@graphicproducts.com



ICON KEY

Keep an eye out for these helpful icons throughout the catalog!



Indicates the most popular products



FYI facts and compliance information



Related items in the catalog or online



CUSTOMIZE IT! Call to customize these select supplies.



Floor Marking & Wayfinding | TABLE OF CONTENTS

AISLE TAPE	3
RIGID™ Aisle Marking Tape	3
RIGID™ Striped Aisle Marking Tape	3
FLEX™ Aisle Marking Tape	4
Print Boundaries & Print PPE	4
5S TAPE	5
LITE™ 5S Tape	5
LITE™ Laminated 5S Tape	6
LITE™ 5S Clean Room Tape	6
GLOW-IN-THE-DARK TAPE	7
GLOW™ Floor Safety Tape	7
GLOW™ Floor Exit Markers	7
GLOW™ Anti-Slip Floor Tape	7
REFLECTIVE TAPE	8
REFLECT™ Engineer-Grade Reflective Tape	8
REFLECT™ Conspicuity Tape	8
REFLECT™ High-Intensity Reflective Tape	9
REFLECT™ DOT-Certified Reflective Stick-ons	9
ANTI-SLIP TAPE	10
TREAD™ Standard Anti-Slip Floor Tape	10
TREAD™ Coarse Anti-Slip Safety Tape	10
TREAD™ Extra Coarse Anti-Slip Safety Tape	10
TREAD™ Waterproof Anti-Slip Floor Tape	11
TREAD™ Non-Abrasive Coarse Resilient	11
TREAD™ Conformable Anti-Slip Floor Tape	11
Bolt-Down Anti-Slip Stair Plates	12
TREAD™ Anti-Slip Die-Cut Steps	12
FLOOR MARKING SHAPES	13
FLEX™ Floor Marking Shapes	13
RIGID™ Floor Marking Shapes	13
FLOOR MARKING ACCESSORIES	14
Light-Duty Floor Tape Applicator	14
Heavy-Duty Floor Tape Applicator	14
Floor Marking Overlaminates	14
Heavy-Duty Floor Marking Overlaminates	14



FLOOR SIGNS	15
Warning	15
Stop	16
Fire	16
First Aid	16
Personal Protective Equipment	17
Prohibited	17
Directional	18
FLOOR SIGN BUNDLES	19
AED Floor Marking Bundle	19
Electrical Panel Clearance Bundle	19
Eye Wash Station Bundle	19
First Aid Kit Floor Sign Bundle	19
Fire Exit Floor Sign Bundle	19
Glow-in-the-Dark Fire Exit Bundle	20
Fire Extinguisher Floor Sign Bundle	20
Pallet Jack Parking Kit	20
Forklift Parking Kit	20
SDS Binder Floor Sign Bundle	20
Spill Kit Floor Sign Bundle	20

Product prices, specifications, and availability are subject to change without notice.

✓ Audit Your Facility

- Can visitors easily locate the reception area, restrooms, and emergency exits?
- Are walkways and traffic lanes easy to identify?
- Are exit routes marked to be kept clear and accessible?
- Are any other clearance areas marked, such as those in front of electrical panels or other hazardous areas?

Aisle Tape

RIGID™ Aisle Marking Tape

Our most popular floor marking material provides maximum durability under pressure. This tough PVC tape with liner has a gloss coat to provide extra strength and visibility. The beveled edges ensure that items moving across the floor won't snag. Organizing traffic flow or implementing 5S is easier to do with Rigid.

KEY FEATURES

- **Fork-Lift Safe:** this floor tape is designed for use with forklifts and other heavy equipment.
- **Beveled Edge:** this floor tape stands the test of time by preventing equipment and items from snagging.
- **Low Profile:** ensures your floor tape does not become a safety hazard.
- **Heavy Duty:** resistant to water and most chemicals.
- **Easy to Install:** our easy-to-peel liners and quick curing adhesive make installation a snap.
- **Removes Cleanly:** the rubber based adhesive removes easily and cleanly with minimal to no residue.
- **Shapes:** offered in circles, corners, Ts and footprints.
- **Lifetime Support:** receive free support for the life of your product.

SPECIFICATIONS

- Thickness: 30 mil
- Min. Application Temperature: 40 °F
- Service Temperature Range: 0 °F to 130 °F
- Shelf Life (Unused): 1 Year
- Warranty: 1 Year Limited Warranty



	2" X 100'	3" X 100'	4" X 100'	6" X 100'
WHITE	PFHD1-2001	PFHD1-3001	PFHD1-4001	PFHD1-6001
BLACK	PFHD1-2002	PFHD1-3002	PFHD1-4002	PFHD1-6002
BLUE	PFHD1-2006	PFHD1-3006	PFHD1-4006	PFHD1-6006
GREEN	PFHD1-2007	PFHD1-3007	PFHD1-4007	PFHD1-6007
YELLOW	PFHD1-2008	PFHD1-3008	PFHD1-4008	PFHD1-6008
ORANGE	PFHD1-2009	PFHD1-3009	PFHD1-4009	PFHD1-6009
RED	PFHD1-2010	PFHD1-3010	PFHD1-4010	PFHD1-6010
	\$105.00	\$125.00	\$145.00	\$175.00



RIGID™ Striped Aisle Marking Tape

Our most durable floor tape just got safer. This hazard stripe design improves visibility to dangerous areas in the workplace. The tough PVC material and adhesive offers a highly durable hold in a variety of heavy traffic environments. It's ideal for marking physical hazards, wayfinding, doorways, exits, and more.

KEY FEATURES

- **High Visibility:** colorful hazard striping creates clear boundaries and increases emphasis of dangerous areas.
- **Heavy Duty:** endures heavy traffic from thick PVC and rubber adhesive. It is also resistant to water and chemicals. The smooth gloss finish provides extra durability and eases maintenance.
- **Subsurface print:** protects from smears and scuffs for optimal service life.
- **Easy to Install:** simply peel and apply for quick and easy installation with no clean up or dry time necessary. For optimal adhesion, allow 24 hours to fully cure.
- **Multipurpose:** rubber adhesive sticks to a variety of surfaces, from finished concrete to tile flooring.
- **Compliant:** black and yellow hazard stripe design meets standards for marking physical hazards: 29 CFR 1910.144(a)(3).
- **Lifetime Support:** receive free support for the life of your product.

SPECIFICATIONS

- Thickness: Film: 19 mi, Adhesive: 11 mil
- Min. Application Temperature: 40 °F
- Service Temperature Range: 40 °F to 130 °F
- Shelf Life (Unused): 2 Years
- Warranty: 1 Year



	2" X 100'	3" X 100'	4" X 100'	6" X 100'
BLACK/YELLOW	PFHD1-2040	PFHD1-3040	PFHD1-4040	PFHD1-6040
BLACK/WHITE	PFHD1-2042	PFHD1-3042	PFHD1-4042	PFHD1-6042
RED/WHITE	PFHD1-2043	PFHD1-3043	PFHD1-4043	PFHD1-6043
GREEN/WHITE	PFHD1-2044	PFHD1-3044	PFHD1-4044	PFHD1-6044
	\$145.00	\$155.00	\$179.00	\$224.00



FLEX™ Aisle Marking Tape

Developed to withstand heavy foot traffic, Flex tapes provide a durable solution for 5S, organization, safety communication and work flow. Flexible enough to be applied to uneven surfaces Flex's textured surface provides an anti-slip surface for foot traffic safety. This tape is ideal for color coding, aisle, hazard and boundary and organizational marking. For use with heavy foot traffic and light vehicle traffic.

KEY FEATURES

- Polycarbonate Textured Surface: the textured surface provides an anti-slip surface.
- Flexible Construction: this floor tape is suited for uneven surfaces.
- Heavy Duty: resistant to water and most chemicals.
- Easy to Install: our easy-to-peel liners and quick curing adhesive make installation a snap.
- Removes Cleanly: the rubber based adhesive removes easily and cleanly with minimal to no residue.

SPECIFICATIONS

- Thickness: 21 mil
- Min. Application Temperature: 40 °F
- Service Temperature Range: 40 °F to 200 °F
- Shelf Life (Unused): 1 Year
- Warranty: 1 Year Limited Warranty



	2" X 100'	3" X 100'	4" X 100'
WHITE	PFHD2-2001	PFHD2-3001	PFHD2-4001
BLACK	PFHD2-2002	PFHD2-3002	PFHD2-4002
BLUE	PFHD2-2006	PFHD2-3006	PFHD2-4006
GREEN	PFHD2-2007	PFHD2-3007	PFHD2-4007
YELLOW	PFHD2-2008	PFHD2-3008	PFHD2-4008
ORANGE	PFHD2-2009	PFHD2-3009	PFHD2-4009
RED	PFHD2-2010	PFHD2-3010	PFHD2-4010
	\$72.00	\$94.00	\$116.00

	2" X 100'	3" X 100'	4" X 100'
BLACK/YELLOW	PFHD2-2040	PFHD2-3040	PFHD2-4040
BLACK/WHITE	PFHD2-2042	PFHD2-3042	PFHD2-4042
RED/WHITE	PFHD2-2043	PFHD2-3043	PFHD2-4043
GREEN/WHITE	PFHD2-2044	PFHD2-3044	PFHD2-4044
	\$85.00	\$110.00	\$135.00

Print Boundaries & Print PPE

Instantly communicate hazards to personnel before they enter an area with eye-catching visual cues. This synthetic material and clear over-laminate provides extra strength for long term durability and service life. Improve safety and meet standards for adequate slip resistance for floor graphics.

KEY FEATURES

- UL 410 Compliant: meets Coefficient of Friction (CoF) for floor graphics slip resistance requirements.
- Durable: the synthetic construction provides a strong, textured tape with anti-slip properties.
- Easy to Install: simply peel and apply to the desired surface for quick and easy installation with no clean up or dry time necessary.
- Removes Cleanly: the rubber based adhesive removes easily and cleanly with minimal to no residue.
- Lifetime Support: receive free support for the life of your product.

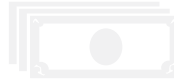
SPECIFICATIONS

- Thickness: Film: 10 mil, Adhesive: 1 mil
- Min. Application Temperature: 50 °F
- Service Temperature Range: -14 °F to 140 °F
- Shelf Life (Unused): 1 Year
- Warranty: 1 Year

3" X 54'	3" X 54'	3" X 54'
SLIPPERY WHEN WET PFPR2-000	FIRE AISLE KEEP CLEAR PFPR2-005	EMERGENCY EXIT PFPR2-006
\$40.00	\$40.00	\$40.00
3" X 54'	3" X 54'	3" X 54'
SAFETY GLASSES PFPR2-001	FORK LIFT TRAFFIC PFPR2-003	ARC FLASH BOUNDARY PFPR2-007
\$40.00	\$40.00	\$40.00
3" X 54'	3" X 54'	3" X 54'
SAFETY FOOTWEAR PFPR2-002	HEARING PROTECTION PFPR2-004	HARD HAT AREA PFPR2-008
\$40.00	\$40.00	\$40.00



Total Penalties for Hazard Communication & Exit Route Identification in 2013



\$4,725,646



Source: www.osha.gov

5S Tape

LITE™ 5S Tape

A general purpose tape, Lite is versatile enough for floor marking, wall marking or as banding tapes. Offered in 12 solid colors and 4 hazard stripe options this conformable tape offers the benefit of a cross linked rubber adhesive and flexible pigmented PVC film. For use with light foot traffic.

KEY FEATURES

- Multi Use: this floor tape can be applied to walls, pipes, floors and more.
- Self Wound: this floor tape does not need a release liner, making installation easy with no waste.
- Flexibility: will adhere to a variety of surfaces including uneven surfaces where more rigid tapes would have difficulty.
- Heavy Duty: resistant to water and most chemicals.
- Removes Cleanly: the rubber based adhesive removes easily and cleanly with minimal to no residue making this tape optimal for temporary applications like trade shows.
- Pigmented Vinyl: the color will not abrade or scratch off.

SPECIFICATIONS

- Thickness: 6 mil
- Min. Application Temperature: 50 °F
- Service Temperature Range: -14 °F to 140 °F
- Shelf Life (Unused): 1 Year



	0.5" X 108'	1" X 108'	2" X 108'	3" X 108'	4" X 108'	6" X 108'
WHITE	PFLT1-0501	PFLT1-1001	PFLT1-2001	PFLT1-3001	PFLT1-4001	PFLT1-6001
BLACK	PFLT1-0502	PFLT1-1002	PFLT1-2002	PFLT1-3002	PFLT1-4002	PFLT1-6002
GRAY	PFLT1-0504	PFLT1-1004	PFLT1-2004	PFLT1-3004	PFLT1-4004	PFLT1-6004
YELLOW	PFLT1-0508	PFLT1-1008	PFLT1-2008	PFLT1-3008	PFLT1-4008	PFLT1-6008
ORANGE	PFLT1-0509	PFLT1-1009	PFLT1-2009	PFLT1-3009	PFLT1-4009	PFLT1-6009
RED	PFLT1-0510	PFLT1-1010	PFLT1-2010	PFLT1-3010	PFLT1-4010	PFLT1-6010
PURPLE	PFLT1-0511	PFLT1-1011	PFLT1-2011	PFLT1-3011	PFLT1-4011	PFLT1-6011
BROWN	PFLT1-0512	PFLT1-1012	PFLT1-2012	PFLT1-3012	PFLT1-4012	PFLT1-6012
KELLY GREEN	PFLT1-0522	PFLT1-1022	PFLT1-2022	PFLT1-3022	PFLT1-4022	PFLT1-6022
LIGHT BLUE	PFLT1-0561	PFLT1-1061	PFLT1-2061	PFLT1-3061	PFLT1-4061	PFLT1-6061
SAFETY BLUE	PFLT1-0565	PFLT1-1065	PFLT1-2065	PFLT1-3065	PFLT1-4065	PFLT1-6065
EMERALD GREEN	PFLT1-0598	PFLT1-1098	PFLT1-2098	PFLT1-3098	PFLT1-4098	PFLT1-6098
	\$9.00	\$11.00	\$15.00	\$18.00	\$21.00	\$27.00

	1" X 108'	2" X 108'	3" X 108'	4" X 108'	6" X 108'
BLACK/YELLOW HAZ	PFLT4-1040	PFLT4-2040	PFLT4-3040	PFLT4-4040	PFLT4-6040
BLACK/WHITE HAZ	PFLT4-1042	PFLT4-2042	PFLT4-3042	PFLT4-4042	PFLT4-6042
RED/WHITE HAZ	PFLT4-1043	PFLT4-2043	PFLT4-3043	PFLT4-4043	PFLT4-6043
GREEN/WHITE HAZ	PFLT4-1044	PFLT4-2044	PFLT4-3044	PFLT4-4044	PFLT4-6044
	\$12.00	\$16.00	\$21.00	\$25.00	\$32.00



WORKERS IN CLUTTERED WORKSPACES SPEND AN AVERAGE OF 1.5 HOURS A DAY LOOKING FOR OR BEING DISTRACTED BY THINGS

Source: www.balanacostime.com/articles/tm_facts_and_figures.htm Dr. Donald E. Wetmore, Professional Speaker Productivity Institute - Time Management Seminars

LITE™ Laminated 5S Tape

Improve awareness to dangerous areas in the workplace such as heavy machinery and ledges. This multicolored hazard stripe and checker design create eye-catching visual cues to help make hazards stand out. This supply is constructed from a single layer of PVC for flexible and quick installation, perfect for temporary floor marking applications in areas with low to medium traffic. The laminated top layer provides extra protection from everyday wear-and-tear for optimal service life.

KEY FEATURES

- **Low Profile:** this tape provides smooth application to prevent equipment and other items from snagging and catching.
- **Easy to Apply:** no liner allows for quick and easy installation including less waste. Simply clean the surface and apply.
- **Conformable:** apply to curved surfaces and beyond while providing a reliable hold.
- **Heavy Duty:** lamination protects the pattern and provides a heavier feel for extra durability.
- **Removes Cleanly:** the rubber based adhesive removes easily and cleanly with minimal to no residue.
- **Lifetime Support:** receive free support for the life of your product.

SPECIFICATIONS

- Thickness: Film: 8.0 mil, Adhesive: 0.8 mil
- Min. Application Temperature: 50 °F
- Service Temperature Range: -14 °F to 140 °F
- Shelf Life (Unused): 1 Year
- Warranty: 1 Year



	1" X 108'	2" X 108'	3" X 108'	4" X 108'	6" X 108'
BLACK/YELLOW HAZ	PFLT3-1040	PFLT3-2040	PFLT3-3040	PFLT3-4040	PFLT3-6040
BLACK/WHITE HAZ	PFLT3-1042	PFLT3-2042	PFLT3-3042	PFLT3-4042	PFLT3-6042
RED/WHITE HAZ	PFLT3-1043	PFLT3-2043	PFLT3-3043	PFLT3-4043	PFLT3-6043
GREEN/WHITE HAZ	PFLT3-1044	PFLT3-2044	PFLT3-3044	PFLT3-4044	PFLT3-6044
YELLOW/MAG HAZ	PFLT3-1045	PFLT3-2045	PFLT3-3045	PFLT3-4045	PFLT3-6045
	\$13.00	\$18.00	\$26.00	\$32.00	\$46.00

	2" X 108'	3" X 108'	4" X 108'	6" X 108'
BLACK/YELLOW CHK	PFLT2-2040	PFLT2-3040	PFLT2-4040	PFLT2-6040
BLACK/WHITE CHK	PFLT2-2042	PFLT2-3042	PFLT2-4042	PFLT2-6042
RED/WHITE CHK	PFLT2-2043	PFLT2-3043	PFLT2-4043	PFLT2-6043
GREEN/WHITE CHK	PFLT2-2044	PFLT2-3044	PFLT2-4044	PFLT2-6044
YELLOW/MAG CHK	PFLT2-2045	PFLT2-3045	PFLT2-4045	PFLT2-6045
	\$24.00	\$31.00	\$45.00	\$61.00

LITE™ 5S Clean Room Tape

Outline safe pathways and cordon off hazardous areas in clean room environments with Pathfinder Lite Clean Room tape. This supply is constructed from a single layer of PVC for flexible and quick installation, perfect for temporary floor marking applications in manufacturing facilities, laboratories, and other clean room controlled environments. Ideal for marking areas for 5S, storage containers, walls, shelving, and more in areas with low to medium traffic.

KEY FEATURES

- **Extremely Low Profile:** the lowest profile tape offered in the Pathfinder line. Provides smooth application to prevent equipment and items from snagging and catching.
- **Easy to Apply:** no liner allows for quick and easy installation including less waste. Simply clean the surface and apply.
- **Conformable:** apply to curved surfaces and beyond while providing a reliable hold.
- **Durable:** rubber adhesive provides a strong hold for reliable service.
- **ISO-compliant:** material is rated for ISO 4 and below clean room environments
- **Removes Cleanly:** the rubber based adhesive removes easily and cleanly with minimal to no residue.
- **Lifetime Support:** receive free support for the life of your product.

SPECIFICATIONS

- Thickness: Film: 6.0 mil, Adhesive: 0.8 mil
- Min. Application Temperature: 50 °F
- Service Temperature Range: -14 °F to 140 °F
- Shelf Life (Unused): 1 Year
- Warranty: 1 Year



	1" X 108'	2" X 108'	3" X 108'	4" X 108'
WHITE	PFLT1-1001CLR	PFLT1-2001CLR	PFLT1-3001CLR	PFLT1-4001CLR
BLACK	PFLT1-1002CLR	PFLT1-2002CLR	PFLT1-3002CLR	PFLT1-4002CLR
BLUE	PFLT1-1006CLR	PFLT1-2006CLR	PFLT1-3006CLR	PFLT1-4006CLR
GREEN	PFLT1-1007CLR	PFLT1-2007CLR	PFLT1-3007CLR	PFLT1-4007CLR
YELLOW	PFLT1-1008CLR	PFLT1-2008CLR	PFLT1-3008CLR	PFLT1-4008CLR
ORANGE	PFLT1-1009CLR	PFLT1-2009CLR	PFLT1-3009CLR	PFLT1-4009CLR
RED	PFLT1-1010CLR	PFLT1-2010CLR	PFLT1-3010CLR	PFLT1-4010CLR
PURPLE	PFLT1-1011CLR	PFLT1-2011CLR	PFLT1-3011CLR	PFLT1-4011CLR
	\$17.49	\$26.30	\$36.58	\$46.56

	2" X 54'
YELLOW/BLACK	PFLT4-2040CLR
BLACK/WHITE	PFLT4-2042CLR
RED/WHITE	PFLT4-2043CLR
	\$22.17



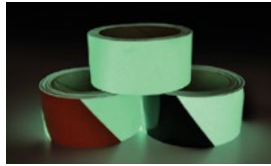
Glow-in-the-Dark Tape

GLOW™ Floor Safety Tape

Designed similarly to our Lite Laminated tapes, Glow tape offers durability and flexibility while being DIN / IMO A.752 (18) "photo luminescent properties" compliant. Features 6 hours of glow this tape does not show significant degradation to UV light when used outdoors. Offered in solid glow and black or red hazard striped. For use with light to moderate foot traffic.

KEY FEATURES

- Permanent Adhesive: the permanent synthetic acrylic adhesive will ensure optimal adhesion to a variety of surfaces.
- Glow Features: glows 6 hours when fully charged.
- Easy to Install: the poly coated release liner makes installation a snap.
- UV Resistant: when applied to a clean surface will not degrade with UV exposure.



SPECIFICATIONS

- Thickness: 13 mil
- Min. Application Temperature: 50 °F
- Shelf Life (Unused): 1 Year

	1" X 30'	2" X 30'	3" X 30'	4" X 30'
SOLID GLOW	PFGL1-1086	PFGL1-2086	PFGL1-3086	PFGL1-4086
	\$17.00	\$36.00	\$50.00	\$71.00

	1" X 30'	2" X 30'	3" X 30'	4" X 30'
GLOW/BLACK HAZ	PFGL1-1038	PFGL1-2038	PFGL1-3038	PFGL1-4038
GLOW/RED HAZ	PFGL1-1039	PFGL1-2039	PFGL1-3039	PFGL1-4039
	\$20.00	\$38.00	\$56.00	\$75.00

GLOW™ Floor Exit Markers

Clearly guide personnel to the direction of the nearest exit in an emergency or other situation when the lights go out with glow in the dark directional emergency exit tape. This tape is designed to glow for 6+ hours, perfect for egress directional wayfinding in any facility. Apply on doorways, handrails, fire alarms, and more for use with light to moderate foot traffic.

KEY FEATURES

- Compliant: meets or exceeds PSPA Standard 002 Part 2 1993, Class A+B Rev 2, IMO Resolution A. 752 (18), ISO 15370, ASTM/E 162/E 648/E 662, ASTM E 2072-00 / E 2073-00, DIN 67510 Parts 1-4.
- Heavy Duty: smooth gloss finish provides extra durability, eases maintenance, and resists fading from UV light exposure.
- Easy to Install: simply peel and apply to the desired surface for quick and easy installation.
- High Visibility: offers 6+ hours of luminescence when fully charged.
- Lifetime Support: receive free support for the life of your product.



	1" X 30'
Exit Left	PFGL1-1086L
Exit Right	PFGL1-1086R
	\$22.00

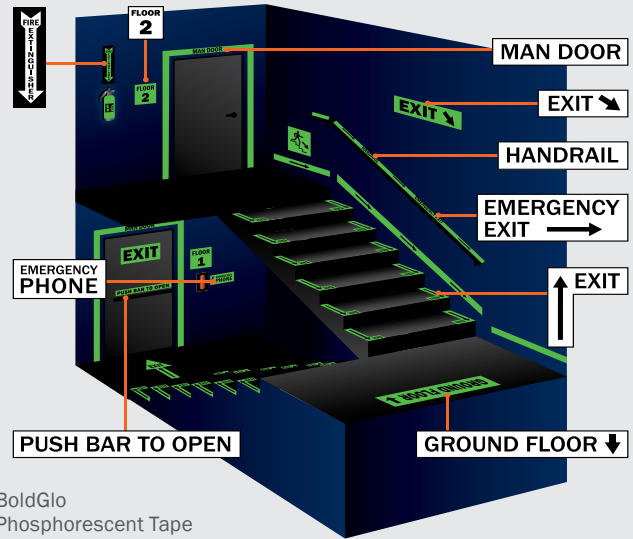
SPECIFICATIONS

- Thickness: Film: 8 mil, Adhesive: 1.5 mil
- Min. Application Temperature: 40 °F
- Service Temperature Range: 40 °F to 130 °F
- Shelf Life (Unused): 1 Year
- Warranty: 1 Year



Marking with Glow Tape

Use Pathfinder Glow tapes with DuraLabel BoldGlo Phosphorescent tapes for a complete facility egress solution.



BoldGlo Phosphorescent Tape

GraphicProducts.com

GLOW™ Anti-Slip Floor Tape

Improve visibility and highlight critical areas in the workplace day or night. This glow in the dark anti-slip tape is made to improve traction, highlight hazardous areas, and safely guide personnel when the lights go out. It's ideal for wayfinding, doorways, stairs, and more.

KEY FEATURES

- Easy to Install: simply peel and apply for quick and easy installation with no clean up or dry time necessary.
- Durable: endures steady foot traffic and is resistant to water and chemicals.
- High Visibility: glows for 6+ hours when fully charged (charge time is about 2 hrs).
- Robust Design: the tread material and photoluminescent coating instantly provide extra traction and visibility to a variety of surfaces both indoors and outdoors.
- Compliant: meets requirements for the PSPA Standard 002 Part 2 1993, Class A+B Rev 2, IMO Resolution A. 752 (18), ISO 15370, ASTM/E 162/E 648/E 662, ASTM E 2072-00 / E 2073-00, DIN 67510 Parts 1-4.
- Lifetime Support: receive free support for the life of your product.

SPECIFICATIONS

- Thickness: Film: 8 mil, Adhesive: 1.5 mil
- Min. Application Temperature: 40 °F
- Service Temperature Range: 40 °F to 130 °F
- Shelf Life (Unused): 1 Year
- Warranty: 1 Year



	1" X 60'	2" X 60'	4" X 60'	6" X 60'
SOLID GLOW	PFTR9-1086	PFTR9-2086	PFTR9-4086	PFTR9-6086
GLOW/BLACK HAZ	PFTR9-1038	PFTR9-2038	PFTR9-4038	PFTR9-6038
	\$28.00	\$55.00	\$110.00	\$165.00

	2" X 60'
BLACK W/GLOW LINE	PFTR9-2002LINE
	\$40.00

Reflective Tape

REFLECT™ Engineer-Grade Reflective Tape

Increase visibility around machinery, pathways, and other important work areas. The reflective properties of this tape help to improve safety awareness with bright visuals that can be seen from greater distances.

KEY FEATURES

- High Visibility: reflective material increases visibility in any environment and is especially noticeable during the daytime.
- Outdoor Durability: lasts 7+ years outdoors.
- Easy to Install: simply peel and apply for quick and easy installation with no clean up or dry time necessary.
- Lifetime Support: receive free support for the life of your product.

SPECIFICATIONS

- Thickness: Film: 4.5 mil, Adhesive: 1 mil
- Min. Application Temperature: 65 °F
- Service Temperature Range: -10 °F to 150 °F
- Shelf Life (Unused): 1 Year
- Warranty: 1 Year



	1" X 30'	1" X 150'	2" X 30'	2" X 150'	3" X 30'	3" X 150'	4" X 30'	4" X 150'
WHITE	PFRE1-1001	PFRE1-1001X	PFRE1-2001	PFRE1-2001X	PFRE1-3001	PFRE1-3001X	PFRE1-4001	PFRE1-4001X
BLUE	PFRE1-1006	PFRE1-1006X	PFRE1-2006	PFRE1-2006X	PFRE1-3006	PFRE1-3006X	PFRE1-4006	PFRE1-4006X
GREEN	PFRE1-1007	PFRE1-1007X	PFRE1-2007	PFRE1-2007X	PFRE1-3007	PFRE1-3007X	PFRE1-4007	PFRE1-4007X
YELLOW	PFRE1-1008	PFRE1-1008X	PFRE1-2008	PFRE1-2008X	PFRE1-3008	PFRE1-3008X	PFRE1-4008	PFRE1-4008X
ORANGE	PFRE1-1009	PFRE1-1009X	PFRE1-2009	PFRE1-2009X	PFRE1-3009	PFRE1-3009X	PFRE1-4009	PFRE1-4009X
RED	PFRE1-1010	PFRE1-1010X	PFRE1-2010	PFRE1-2010X	PFRE1-3010	PFRE1-3010X	PFRE1-4010	PFRE1-4010X
	\$12.00	\$50.00	\$23.00	\$90.00	\$35.00	\$130.00	\$47.00	\$175.00

	1" X 30'	1" X 150'	2" X 30'	2" X 150'	3" X 30'	3" X 150'	4" X 30'	4" X 150'
BLACK/ORANGE HAZ	PFRE1-1037	PFRE1-1037X	PFRE1-2037	PFRE1-2037X	PFRE1-3037	PFRE1-3037X	PFRE1-4037	PFRE1-4037X
BLACK/YELLOW HAZ	PFRE1-1040	PFRE1-1040X	PFRE1-2040	PFRE1-2040X	PFRE1-3040	PFRE1-3040X	PFRE1-4040	PFRE1-4040X
ORANGE/WHT HAZ	PFRE1-1041	PFRE1-1041X	PFRE1-2041	PFRE1-2041X	PFRE1-3041	PFRE1-3041X	PFRE1-4041	PFRE1-4041X
BLACK/WHITE HAZ	PFRE1-1042	PFRE1-1042X	PFRE1-2042	PFRE1-2042X	PFRE1-3042	PFRE1-3042X	PFRE1-4042	PFRE1-4042X
RED/WHITE HAZ	PFRE1-1043	PFRE1-1043X	PFRE1-2043	PFRE1-2043X	PFRE1-3043	PFRE1-3043X	PFRE1-4043	PFRE1-4043X
	\$16.00	\$70.00	\$31.00	\$137.00	\$46.00	\$199.00	\$62.00	\$269.00

REFLECT™ Conspicuity Tape

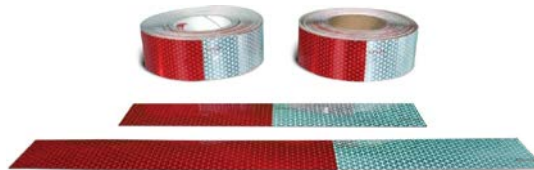
Increase visibility day and night with DOT-certified red and white conspicuity reflective tape. The highly reflective properties of this tape are made to increase visibility for other drivers and vehicles from long distances, ideal for work trucks, trailers, and other vehicles that require visibility from afar.

KEY FEATURES

- High Visibility: highly reflective material increases daytime and nighttime visibility.
- Outdoor Durability: lasts 5 - 10 years outdoors.
- Compliant: meets DOT-C2 and NHTSA conspicuity requirements.
- Easy to Install: simply peel and apply for quick and easy installation with no clean up or dry time necessary.
- Lifetime Support: receive free support for the life of your product.

SPECIFICATIONS

- Thickness: 6.5 mil
- Min. Application Temperature: 65 °F
- Service Temperature Range: -40 °F to 180 °F
- Shelf Life (Unused): 1 Year
- Warranty: 1 Year



5 YEAR TAPE	2" X 30'	2" X 150'
WHT(6")/RD(6")	PFRE3-0566	PFRE3-0566X
WHT(7")/RD(11")	PFRE3-05711	PFRE3-05711X
	\$39.00	\$130.00

10 YEAR TAPE	2" X 30'	2" X 150'
WHT(6")/RD(6")	PFRE3-1066	PFRE3-1066X
WHT(7")/RD(11")	PFRE3-10711	PFRE3-10711X
	\$46.00	\$155.00



REFLECT™ High-Intensity Reflective Tape

Increase visibility around machinery, pathways, and other important work areas. The highly reflective properties of this tape help to improve safety awareness with bright visuals that can be seen from long distances both day and night. Perfect for traffic signs and personal protective equipment.

KEY FEATURES

- **Extreme High Visibility:** highly reflective material increases daytime and nighttime visibility.
- **Outdoor Durability:** lasts 10+ years outdoors.
- **Compliant:** meets or exceeds requirements of ASTM D 4956 for types I, III, IV and V including shrinkage, flexibility, liner removal, adhesion, impact resistance, specular gloss and outdoor weathering.
- **Easy to Install:** simply peel and apply for quick and easy installation with no clean up or dry time necessary.
- **Lifetime Support:** receive free support for the life of your product.

SPECIFICATIONS

- Thickness: Film: 14 mil, Adhesive: 1 mil
- Min. Application Temperature: 68 °F
- Service Temperature Range: -40 °F to 180 °F
- Shelf Life (Unused): 1 Year
- Warranty: 1 Year



	2" X 30'	2" X 150'	3" X 30'	3" X 150'	4" X 30'	4" X 150'
WHITE	PFRE2-2001	PFRE2-2001X	PFRE2-3001	PFRE2-3001X	PFRE2-4001	PFRE2-4001X
BLUE	PFRE2-2006	PFRE2-2006X	PFRE2-3006	PFRE2-3006X	PFRE2-4006	PFRE2-4006X
GREEN	PFRE2-2007	PFRE2-2007X	PFRE2-3007	PFRE2-3007X	PFRE2-4007	PFRE2-4007X
YELLOW	PFRE2-2008	PFRE2-2008X	PFRE2-3008	PFRE2-3008X	PFRE2-4008	PFRE2-4008X
ORANGE	PFRE2-2009	PFRE2-2009X	PFRE2-3009	PFRE2-3009X	PFRE2-4009	PFRE2-4009X
RED	PFRE2-2010	PFRE2-2010X	PFRE2-3010	PFRE2-3010X	PFRE2-4010	PFRE2-4010X
	\$50.00	\$200.00	\$75.00	\$260.00	\$100.00	\$350.00

	2" X 30'	2" X 150'	3" X 30'	3" X 150'	4" X 30'	4" X 150'
NEON	PFRE2-2052	PFRE2-2052X	PFRE2-3052	PFRE2-3052X	PFRE2-4052	PFRE2-4052X
	\$105.00	\$395.00	\$150.00	\$530.00	\$205.00	\$700.00

	2" X 30'	2" X 150'
BLACK/YELLOW	PFRE2-2040	PFRE2-2040X
RED/WHITE	PFRE2-2043	PFRE2-2043X
	\$60.00	\$220.00



REFLECT™ DOT-Certified Reflective Stick-ons

Increase visibility with DOT-certified reflective shapes to apply wherever additional reflection is needed. The highly reflective properties of the tape are made to improve safety awareness and visibility to equipment and smaller items in low-light situations such as personal protective gear like hard hats and semi-truck fenders.

KEY FEATURES

- **High Visibility:** highly reflective material increases daytime and nighttime visibility.
- **Outdoor Durability:** lasts 10+ years outdoors.
- **Compliant:** meets DOT-C2 and NHTSA conspicuity requirements.
- **Easy to Install:** simply peel and apply to nearly any application for quick and easy installation with no clean up or dry time necessary.
- **Lifetime Support:** receive free support for the life of your product.

SPECIFICATIONS

- Thickness: 16 mil
- Min. Application Temperature: 50 °F
- Service Temperature Range: -40 °F to 180 °F
- Shelf Life (Unused): 1 Year
- Warranty: 1 Year

	2" X 3.5"	3" CIRCLE
AMBER	PFRE5-23509-50	PFRE5-3009-50
RED	PFRE5-23510-50	PFRE5-3010-50
	\$70.00	\$70.00



Anti-Slip Tape

TREAD™ Standard Anti-Slip Floor Tape

Improve traction and reduce slips, trips, and falls on almost any surface. This all-purpose tread tape stands strong to a variety of environments and substances, perfect for areas with light to medium traffic. Apply anywhere that could use extra traction such as ramps, stairways, walkways, and more.

KEY FEATURES

- Durable: endures steady foot and equipment traffic and is resistant to water and chemicals.
- Compliant: meets requirements for OSHA 29 CFR 1910.23, CoF Standards for Americans with Disabilities Act 2008, NFSA (National Flooring Safety Institute) 101-A.
- Easy to Install: simply peel and apply for quick and easy installation with no clean up or dry time necessary.
- Color Code: have the ability to color code areas to enhance safety awareness with bright visual cues for ramp grades, appropriate step areas, or to draw attention to hazards.
- Lifetime Support: receive free support for the life of your product.

SPECIFICATIONS

- Thickness: 25 mil
- Grit: 60 aluminum oxide grit
- Min. Application Temperature: 50° F
- Service Temperature Range: -22° F to 158° F
- Shelf Life (Unused): 1 Year
- Warranty: 1 Year



	1" X 60'	2" X 60'	3" X 60'	4" X 60'	6" X 60'
WHITE	PFTR1-1001	PFTR1-2001	PFTR1-3001	PFTR1-4001	PFTR1-6001
BLACK	PFTR1-1002	PFTR1-2002	PFTR1-3002	PFTR1-4002	PFTR1-6002
TRANSPARENT	PFTR1-1003	PFTR1-2003	PFTR1-3003	PFTR1-4003	PFTR1-6003
GRAY	PFTR1-1004	PFTR1-2004	PFTR1-3004	PFTR1-4004	PFTR1-6004
BLUE	PFTR1-1006	PFTR1-2006	PFTR1-3006	PFTR1-4006	PFTR1-6006
GREEN	PFTR1-1007	PFTR1-2007	PFTR1-3007	PFTR1-4007	PFTR1-6007
YELLOW	PFTR1-1008	PFTR1-2008	PFTR1-3008	PFTR1-4008	PFTR1-6008
ORANGE	PFTR1-1009	PFTR1-2009	PFTR1-3009	PFTR1-4009	PFTR1-6009
RED	PFTR1-1010	PFTR1-2010	PFTR1-3010	PFTR1-4010	PFTR1-6010
BROWN	PFTR1-1012	PFTR1-2012	PFTR1-3012	PFTR1-4012	PFTR1-6012
FLUORESCENT	PFTR1-1052	PFTR1-2052	PFTR1-3052	PFTR1-4052	PFTR1-6052
	\$20.00	\$33.00	\$47.00	\$59.00	\$92.00

	1" X 60'	2" X 60'	3" X 60'	4" X 60'	6" X 60'
BLACK/YELLOW HAZ	PFTR1-1042	PFTR1-2042	PFTR1-3042	PFTR1-4042	PFTR1-6042
RED/WHITE HAZ	PFTR1-1043	PFTR1-2043	PFTR1-3043	PFTR1-4043	PFTR1-6043
	\$20.00	\$40.00	\$59.00	\$77.00	\$100.00

	3" X 60'
ATTENTION DANGER	PFTRA
	\$75.00

TREAD™ Coarse Anti-Slip Safety Tape

Improve traction to reduce slips, trips, and falls on almost any surface. This tape is designed with large coarse particles that provide superior traction to prevent slips and falls on extra slippery surfaces and areas where dirt and debris accumulate. This coarse tread tape is less likely to wear down compared to the standard tread and stands strong in a variety of applications including ramps, vehicles, equipment, and more.

KEY FEATURES

- Durable: endures steady foot and equipment traffic and is resistant to water and chemicals.
- Robust Design: tape consists of large coarse particles that protect from damage of dirt and debris.
- Easy to Install: simply peel and apply for quick and easy installation with no clean up or dry time necessary.
- Lifetime Support: receive free support for the life of your product.

SPECIFICATIONS

- Thickness: 28 mil
- Grit: 36 aluminum oxide grit
- Min. Application Temperature: 50° F
- Service Temperature Range: -22° F to 158° F
- Shelf Life (Unused): 1 Year
- Warranty: 1 Year



	1" X 60'	2" X 60'	3" X 60'	4" X 60'	6" X 60'
BLACK	PFTR2-1002	PFTR2-2002	PFTR2-3002	PFTR2-4002	PFTR2-6002
YELLOW	PFTR2-1008	PFTR2-2008	PFTR2-3008	PFTR2-4008	PFTR2-6008
	\$20.00	\$32.00	\$48.00	\$59.00	\$92.00

TREAD™ Extra Coarse Anti-Slip Safety Tape

Provide heavy-duty traction to reduce slips, trips, and falls on almost any surface. This rugged tape is designed with extra-coarse tread to remain intact in high traffic areas. The aggressive adhesive holds strong in a variety of industrial applications like ramps, construction and agriculture vehicles and equipment, and more.

KEY FEATURES

- Durable: endures steady foot and equipment traffic and is resistant to water and chemicals.
- Robust Design: prevents damage from debris for lasting service.
- Easy to Install: simply peel and apply for quick and easy installation with no clean up or dry time necessary.
- Lifetime Support: receive free support for the life of your product.

SPECIFICATIONS

- Thickness: 30 mil
- Grit: 30 aluminum oxide grit
- Min. Application Temperature: 50° F
- Service Temperature Range: -22° F to 158° F
- Shelf Life (Unused): 1 Year
- Warranty: 1 Year



	1" X 60'	2" X 60'	3" X 60'	4" X 60'	6" X 60'
BLACK	PFTR3-1002	PFTR3-2002	PFTR3-3002	PFTR3-4002	PFTR3-6002
	\$21.00	\$35.00	\$55.00	\$69.00	\$107.00

TREAD™ Waterproof Anti-Slip Floor Tape

Provide safe traction to reduce slips, trips, and falls on almost any surface. This anti-slip tape is designed with a non-abrasive tread material to provide a comfortable non-slip surface for application in any area people congregate. It's perfect to apply in areas that get wet including maritime equipment, boats, step stools, and more.

KEY FEATURES

- Durable: endures steady foot traffic and is resistant to water and chemicals.
- Waterproof Design: non-abrasive tread material is waterproof for a wider variety of applications and safe contact with bare skin.
- Easy to Install: simply peel and apply for quick and easy installation with no clean up or dry time necessary.
- Lifetime Support: receive free support for the life of your product.

SPECIFICATIONS

- Thickness: 25 mil
- Min. Application Temperature: 50 °F
- Service Temperature Range: -22 °F to 158 °F
- Shelf Life (Unused): 1 Year
- Warranty: 1 Year



	1" X 60'	2" X 60'	3" X 60'	4" X 60'	6" X 60'
WHITE	PFTR4-1001	PFTR4-2001	PFTR4-3001	PFTR4-4001	PFTR4-6001
BLACK	PFTR4-1002	PFTR4-2002	PFTR4-3002	PFTR4-4002	PFTR4-6002
TRANSPARENT	PFTR4-1003	PFTR4-2003	PFTR4-3003	PFTR4-4003	PFTR4-6003
GRAY	PFTR4-1004	PFTR4-2004	PFTR4-3004	PFTR4-4004	PFTR4-6004
	\$15.00	\$28.00	\$41.00	\$54.00	\$75.00

TREAD™ Non-Abrasive Coarse Resilient

Provide safe and heavy-duty traction to reduce slips, trips, and falls on almost any surface. This anti-slip tape is designed with a thick, non-abrasive tread material to provide a comfortable non-slip surface for application in any area people congregate. It's perfect for areas that get wet including maritime equipment, boats, step stools, and more.

KEY FEATURES

- Durable: endures steady foot traffic and is resistant to water and chemicals.
- Robust Design: thick non-abrasive tread material is waterproof for a wider variety of applications and safe contact with bare skin.
- Easy to Install: simply peel and apply for quick and easy installation with no clean up or dry time necessary.
- Lifetime Support: receive free support for the life of your product.



SPECIFICATIONS

- Thickness: 50 mil
- Min. Application Temperature: 50 °F
- Service Temperature Range: 14 °F to 176 °F
- Shelf Life (Unused): 1 Year
- Warranty: 1 Year

	1" X 60'	2" X 60'	3" X 60'	4" X 60'	6" X 60'
WHITE	PFTR6-1001	PFTR6-2001	PFTR6-3001	PFTR6-4001	PFTR6-6001
BLACK	PFTR6-1002	PFTR6-2002	PFTR6-3002	PFTR6-4002	PFTR6-6002
CLEAR	PFTR6-1003	PFTR6-2003	PFTR6-3003	PFTR6-4003	PFTR6-6003
GRAY	PFTR6-1004	PFTR6-2004	PFTR6-3004	PFTR6-4004	PFTR6-6004
	\$28.00	\$56.00	\$83.00	\$110.00	\$165.00

TREAD™ Conformable Anti-Slip Floor Tape

Prevent slips, trips, and falls on a variety of simple and complex surfaces. This anti-slip tape has a sandpaper-like surface designed to conform to a variety of textured, flat or curved surfaces to improve safety. It's ideal for areas and equipment that could use better traction including ladders, construction sites, ramps, and more.

KEY FEATURES

- Foil Backed: aluminum foil base ensures a reliable hold to the surface.
- Easy to Install: simply peel and apply for quick and easy installation with no clean up or dry time necessary.
- Durable: endures steady foot traffic and is resistant to water and chemicals.
- Robust Design: the textured tread and strong base provides a reliable grip to a variety of surfaces.
- Compliant: meets or exceeds the Coefficient of Friction (CoF) level for any State or Federal requirement; MIL SPECS MIL-17951, MIL-5044 and MIL-PRF-24667, OSHA and Americans with Disabilities Act 2008.
- Lifetime Support: receive free support for the life of your product.



SPECIFICATIONS

- Thickness: Film: 30 mil, Adhesive: 2 mil
- Grit: 60 aluminum oxide grit
- Min. Application Temperature: 60 °F
- Service Temperature Range: -22 °F to 176 °F
- Shelf Life (Unused): 2 Years
- Warranty: 1 Year

	1" X 60'	2" X 60'	3" X 60'	4" X 60'	6" X 60'
BLACK	PFTR7-1002	PFTR7-2002	PFTR7-3002	PFTR7-4002	PFTR7-6002
YELLOW	PFTR7-1008	PFTR7-2008	PFTR7-3008	PFTR7-4008	PFTR7-6008
BLACK/YELLOW HAZ	PFTR7-1040	PFTR7-2040	PFTR7-3040	PFTR7-4040	PFTR7-6040
	\$43.00	\$67.00	\$104.00	\$138.00	\$207.00

Bolt-Down Anti-Slip Stair Plates

Minimize slips, trips, and falls on difficult surfaces with anti-slip stair plates. The stair plates consist of PathFinder standard tread tape on a weatherproof aluminum panel that provides reliable traction in any environment. For areas where pressure sensitive anti-slip tapes cannot stick, bolt-down stair plates for a stable surface ideal for old stairs, ramps, docks, machinery, and more.

KEY FEATURES

- Easy to Install: includes 6 predrilled holes to easily and quickly install with screws or nails.
- Adaptable Design: apply to wet, uneven, oil-stained, contaminated or worn surfaces.
- Safe and Secure: strong tread to keep personnel stable and reduce chances of injury.
- Aluminum Base: bolt-down plate consists of an aluminum weatherproof panel that stands strong in different environments.
- Compliant: meets requirements for OSHA 29 CFR 1910.23, CoF Standards for Americans with Disabilities Act 2008, NFSI (National Flooring Safety Institute) 101-A.
- Lifetime Support: receive free support for the life of your product.

SPECIFICATIONS

- Thickness: Aluminum: 62.5 mil, Non-slip film: 25 mil
- Grit: 60 aluminum oxide grit
- Service Temperature Range: -14° F to 140° F
- Warranty: 1 Year

	4.5" X 25"	4.7" X 1.7" X 25"
BLACK	PFTR0-4525	PFTR0-4702L
	\$27.00	\$44.00



This Accounts for **27.8%**
OF TOTAL INJURIES

Resulting in more than **3,000,000** lost days.

Source: www.bls.gov/news.release/pdf/osh2.pdf Table 5

TREAD™ Anti-Slip Die-Cut Steps

Instantly communicate hazards to workers and visitors who are navigating the workplace. This hazard-striped yellow and black tread tape is made to improve traction, communicate areas of safe foot placement, and provide caution to areas prone to slips and trips. It's ideal for ledges, stairs, entryways, and more. Choose the pre-printed label text that best suits your facility: "CAUTION" or "WATCH YOUR STEP."

KEY FEATURES

- Easy to Install: pre-printed die-cut design lets you simply peel and apply for quick and easy installation with no clean up or dry time necessary.
- Durable: endures steady foot traffic and is resistant to water and chemicals.
- Rounded Corners: rounded corners provide a more reliable hold to reduce the chances of peeling.
- Robust Design: pre-printed hazard striped tread material instantly provides durable traction and large pre-printed text to instantly communicate caution on a variety of surfaces.
- Compliant: meets requirements for OSHA 29 CFR 1910.23, CoF Standards for Americans with Disabilities Act 2008, NFSI (National Flooring Safety Institute) 101-A.
- Lifetime Support: receive free support for the life of your product.

SPECIFICATIONS

- Thickness: 25 mil
- Grit: 60 aluminum oxide grit
- Min. Application Temperature: 50° F
- Service Temperature Range: -22° F to 158° F
- Shelf Life (Unused): 1 Year
- Warranty: 1 Year


	6" X 24"
CAUTION	PFTR8-6024CAT
WATCH YOUR STEP	PFTR8-6024WAT
	\$5.00




Floor Marking Shapes

FLEX™ Floor Marking Shapes

Easily organize your workspace with Flex Shapes. These versatile, easy-to-apply floor markers are perfect for marking off inventory and storage spaces for a clean and efficient workplace. Flex Shapes are available in a variety of colors matching our popular Flex Tape. Our outside corners (L-shaped) establish the boundary of an area, while our T-shaped outlines separate one space from another. Flex Shapes offer long-lasting performance in heavy-traffic areas thanks to their strong 20-mil construction and impact-resistant surface. The marker's die-cut construction ensures fast and easy installation without clean-up or dry-time. A flexible under-layer allows for everyday use on a range of floor types, including uneven surfaces.




FLEX™ Floor Marking Ts	6" x 6"
WHITE	PFHD2-66201T
BLACK	PFHD2-66202T
BLUE	PFHD2-66206T
GREEN	PFHD2-66207T
YELLOW	PFHD2-66208T
ORANGE	PFHD2-66209T
RED	PFHD2-66210T
QTY	40
	\$65.00




FLEX™ Floor Marking Corners	6" x 6"
WHITE	PFHD2-66201L
BLACK	PFHD2-66202L
BLUE	PFHD2-66206L
GREEN	PFHD2-66207L
YELLOW	PFHD2-66208L
ORANGE	PFHD2-66209L
RED	PFHD2-66210L
QTY	50
	\$65.00

RIGID™ Floor Marking Shapes


Organizing traffic flow or implementing 5S is easier to do with Rigid Shapes. Made from the same heavy-duty material as our PathFinder Rigid floor tape, these shapes can withstand heavy warehouse abuse including mild to heavy forklift and foot traffic. Use Ts to clearly mark locations of items and create bold outlines to separate one space from another. Apply Corners for marking off inventory, pallet storage, and warehousing spaces. Circles are ideal for directing traffic, color-coding, and marking product locations. Circles also provide an alternative to solid lines in the presence of heavy vehicle traffic. Use the highly visible and durable Footprints to guide personnel through work areas and steer them away from hazardous zones. Rigid Shape's die-cut construction and easy-to-peel liners make for fast and easy installation without clean-up or dry time. The ultra-rigid material has a long lasting adhesive so you can apply them all to a variety of floor types.




RIGID™ Floor Marking Ts	6" x 6"	8" x 8"
WHITE	PFHD1-66201T	-
BLACK	PFHD1-66202T	-
BLUE	PFHD1-66206T	PFHD1-88406T
GREEN	PFHD1-66207T	PFHD1-88407T
YELLOW	PFHD1-66208T	PFHD1-88408T
ORANGE	PFHD1-66209T	PFHD1-88409T
RED	PFHD1-66210T	PFHD1-88410T
QTY	40	10
	\$72.99	\$32.99



RIGID™ Floor Marking Corners	6" x 6"	8" x 8"
WHITE	PFHD1-66201L	-
BLACK	PFHD1-66202L	-
BLUE	PFHD1-66206L	PFHD1-88406L
GREEN	PFHD1-66207L	PFHD1-88407L
YELLOW	PFHD1-66208L	PFHD1-88408L
ORANGE	PFHD1-66209L	PFHD1-88409L
RED	PFHD1-66210L	PFHD1-88410L
QTY	50	10
	\$85.00	\$29.99



RIGID™ Circles	3.5" Circle
WHITE	PFHD1-35CIRC01
BLACK	PFHD1-35CIRC02
BLUE	PFHD1-35CIRC06
GREEN	PFHD1-35CIRC07
YELLOW	PFHD1-35CIRC08
ORANGE	PFHD1-35CIRC09
RED	PFHD1-35CIRC10
QTY	45
	\$40.99



RIGID™ Floor Marking Footprints	3.5" x 9.5"
WHITE	PFHD1-35STEP01
BLACK	PFHD1-35STEP02
BLUE	PFHD1-35STEP06
GREEN	PFHD1-35STEP07
YELLOW	PFHD1-35STEP08
ORANGE	PFHD1-35STEP09
RED	PFHD1-35STEP10
QTY	35
	\$70.00

Floor Marking Accessories

Light-Duty Floor Tape Applicator

Ensure easy and professional floor marking with the Lite Floor Marking Tape Applicator. Thanks to a solid steel construction, the applicator is ideal for large floor marking projects; it installs 1,600 feet per hour, offers consistent unrolling and application, and requires little or no training. The applicator is compatible only with PathFinder Lite Floor Marking tape. Maximum 4-inch wide rolls.



SKU	PRICE
PFFTA-000	\$179.00

Heavy-Duty Floor Tape Applicator

Create effective forklift lanes and pathways, and improve facility wayfinding by applying PathFinder floor tape (2" to 4" widths) with the new PathFinder Floor Tape Applicator.



The applicator saves time by removing your tape's backing as it unrolls, and the heavy-duty roller system presses tape into place to ensure an effective, long-lasting bond in warehouses, stockrooms, and anywhere wayfinding is needed.

The applicator is compatible with the following PathFinder tapes: Rigid, Flex, Lite, Lite Laminated, Standard Non-Abrasive Tread, Extra Coarse Tread, Non-Abrasive Coarse Resilient Tread, Coarse Tread, Conformable Tread, Standard Tread, Tread Glow, and Glow Tape. (2" to 4" widths only)

SKU	PRICE
PFTA-001	\$994.99

Floor Marking Overlaminates

Place this supply over Printable Floor Marking Tape or DuraPav Floor Marking Tape to increase their lifespan. Use 2" overlaminates for 1/2" - 1" tape, 3" overlaminates for 2" tape, 4" overlaminates for 3" tape, or 5" overlaminates for 4" tape.



	2" X 140'	3" X 140'	4" X 140'	5" X 140'
CLEAR	L320140	L330140	L340140	L350140
	\$124.95	\$148.95	\$172.95	\$196.95

Heavy-Duty Floor Marking Overlaminates

Protect floor graphics from wear-and-tear with a durable, clear laminate

- Protect floor graphics from wear-and-tear, fading, forklifts, heavy foot traffic, and more
- Get your messages across with a smooth gloss finish
- Use on various indoor industrial surfaces



	2" X 100'	3" X 100'	4" X 100'	5" X 100'	6" X 100'
CLEAR	PFHD1-2003	PFHD1-3003	PFHD1-4003	PFHD1-5003	PFHD1-6003
	\$105.00	\$125.00	\$145.00	\$165.00	\$175.00



Widely Used Floor Marking Colors and Patterns

While there are no specific floor marking color requirements, the following is a color-coding guide popular in many facilities.

YELLOW

When used for safety purposes, indicates caution. For organizational purposes, used for pedestrian paths, vehicle paths, aisles, work areas, and storage areas.



RED

For safety purposes, used as a hazard indicator. For organizational purposes, used to mark the boundaries of a defect product area or scrap material area.



ORANGE

For safety purposes, used to indicate a level of caution more serious than yellow. For organizational purposes, used to indicate materials or product held for inspection.



WHITE

Often used for general purposes, such as outlines around equipment or storage racks.



BLACK / GREEN / BLUE / PURPLE

Various colors can be used for organizational purposes, such as indicating raw materials, work-in-progress materials, or finished goods.



BLACK/YELLOW STRIPE

When used for safety purposes, indicates caution. For organizational purposes, used for pedestrian paths, vehicle paths, aisles, work areas, and storage areas.



RED/WHITE STRIPE

Often used to indicate areas that must be kept clear for safety reasons (like around exit points, electrical panels, or hazardous equipment.)



BLACK/WHITE STRIPE

Often used for general purposes, such as outlines around equipment or storage racks.



Floor Signs

Create a safer and more efficient workplace with our easy-to-read floor signs. Our lineup of more than 50 ready-made signs enhances safety and productivity through simple, eye-catching cues for your facility floor. The peel-and-stick signs allow for immediate installation (which means no dry time, fumes, or messy clean-up) and stand up to pedestrian, hand-truck, and even forklift traffic. PathFinder floor signs and wayfinding products are the solution to your facility's safety, wayfinding, and organizational flooring needs.

RECTANGLE		OTHER SHAPES	
12" x 9"	\$11.00	12"	\$14.00
24" x 18"	\$43.00	16"	\$26.00
30" x 21"	\$63.00	20"	\$40.00
36" x 27"	\$97.00	24"	\$58.00
50" x 32"	\$186.00	30"	\$90.00
		32"	\$102.00

Warning



- 12" DS0055-UEN
- 16" DS0056-UEN
- 20" DS0057-UEN
- 24" DS0058-UEN
- 30" DS0059-UEN
- 32" DS0060-UEN



- 12" DS0049-UEN
- 16" DS0050-UEN
- 20" DS0051-UEN
- 24" DS0052-UEN
- 30" DS0053-UEN
- 32" DS0054-UEN



- 12" DS0061-UEN
- 16" DS0062-UEN
- 20" DS0063-UEN
- 24" DS0064-UEN
- 30" DS0065-UEN
- 32" DS0066-UEN



- 12" DS0073-UEN
- 16" DS0074-UEN
- 20" DS0075-UEN
- 24" DS0076-UEN
- 30" DS0077-UEN
- 32" DS0078-UEN



- 12" DS0085-UEN
- 16" DS0086-UEN
- 20" DS0087-UEN
- 24" DS0088-UEN
- 30" DS0089-UEN
- 32" DS0090-UEN



- 12" DS0079-UEN
- 16" DS0080-UEN
- 20" DS0081-UEN
- 24" DS0082-UEN
- 30" DS0083-UEN
- 32" DS0084-UEN



- 12" DS0091-UEN
- 16" DS0092-UEN
- 20" DS0093-UEN
- 24" DS0094-UEN
- 30" DS0095-UEN
- 32" DS0096-UEN



- 12" DS0097-UEN
- 16" DS0098-UEN
- 20" DS0099-UEN
- 24" DS0100-UEN
- 30" DS0101-UEN
- 32" DS0102-UEN



- 12" DS0067-UEN
- 16" DS0068-UEN
- 20" DS0069-UEN
- 24" DS0070-UEN
- 30" DS0071-UEN
- 32" DS0072-UEN



- 12" DS0109-UEN
- 16" DS0110-UEN
- 20" DS0111-UEN
- 24" DS0112-UEN
- 30" DS0113-UEN
- 32" DS0114-UEN



- 12" DS0103-UEN
- 16" DS0104-UEN
- 20" DS0105-UEN
- 24" DS0106-UEN
- 30" DS0107-UEN
- 32" DS0108-UEN



Need custom floor signs?
Call us at **888-637-3893**

Stop



- 12" DS0001-UEN
- 16" DS0002-UEN
- 20" DS0003-UEN
- 24" DS0004-UEN
- 30" DS0005-UEN
- 32" DS0006-UEN



- 12" DS0031-UEN
- 16" DS0032-UEN
- 20" DS0033-UEN
- 24" DS0034-UEN
- 30" DS0035-UEN
- 32" DS0036-UEN



- 12" DS0025-UEN
- 16" DS0026-UEN
- 20" DS0027-UEN
- 24" DS0028-UEN
- 30" DS0029-UEN
- 32" DS0030-UEN



- 12" DS0007-UEN
- 16" DS0008-UEN
- 20" DS0009-UEN
- 24" DS0010-UEN
- 30" DS0011-UEN
- 32" DS0012-UEN



- 12" DS0019-UEN
- 16" DS0020-UEN
- 20" DS0021-UEN
- 24" DS0022-UEN
- 30" DS0023-UEN
- 32" DS0024-UEN



- 12" DS0013-UEN
- 16" DS0014-UEN
- 20" DS0015-UEN
- 24" DS0016-UEN
- 30" DS0017-UEN
- 32" DS0018-UEN



- 12" DS0037-UEN
- 16" DS0038-UEN
- 20" DS0039-UEN
- 24" DS0040-UEN
- 30" DS0041-UEN
- 32" DS0042-UEN



- 12"x9" DS0321-UEN
- 24"x18" DS0322-UEN
- 30"x21" DS0323-UEN
- 36"x27" DS0324-UEN
- 50"x32" DS0325-UEN

Fire



- 12" DS0229-UEN
- 16" DS0230-UEN
- 20" DS0231-UEN
- 24" DS0232-UEN
- 30" DS0233-UEN
- 32" DS0234-UEN



- 12" DS0235-UEN
- 16" DS0236-UEN
- 20" DS0237-UEN
- 24" DS0238-UEN
- 30" DS0239-UEN
- 32" DS0240-UEN



- 12"x9" DS0311-UEN
- 24"x18" DS0312-UEN
- 30"x21" DS0313-UEN
- 36"x27" DS0314-UEN
- 50"x32" DS0315-UEN



- 12"x9" DS0316-UEN
- 24"x18" DS0317-UEN
- 30"x21" DS0318-UEN
- 36"x27" DS0319-UEN
- 50"x32" DS0320-UEN

We're here to help!



Call us at
888-637-3893

First Aid



- 12" DS0247-UEN
- 16" DS0248-UEN
- 20" DS0249-UEN
- 24" DS0250-UEN
- 30" DS0251-UEN
- 32" DS0252-UEN



- 12" DS0241-UEN
- 16" DS0242-UEN
- 20" DS0243-UEN
- 24" DS0244-UEN
- 30" DS0245-UEN
- 32" DS0246-UEN



- 12" DS0253-UEN
- 16" DS0254-UEN
- 20" DS0255-UEN
- 24" DS0256-UEN
- 30" DS0257-UEN
- 32" DS0258-UEN

RECTANGLE		OTHER SHAPES	
12" x 9"	\$11.00	12"	\$14.00
24" x 18"	\$43.00	16"	\$26.00
30" x 21"	\$63.00	20"	\$40.00
36" x 27"	\$97.00	24"	\$58.00
50" x 32"	\$186.00	30"	\$90.00
		32"	\$102.00

Personal Protective Equipment



- 12" DS0151-UEN
- 16" DS0152-UEN
- 20" DS0153-UEN
- 24" DS0154-UEN
- 30" DS0155-UEN
- 32" DS0156-UEN



- 12" DS0157-UEN
- 16" DS0158-UEN
- 20" DS0159-UEN
- 24" DS0160-UEN
- 30" DS0161-UEN
- 32" DS0162-UEN



- 12" DS0145-UEN
- 16" DS0146-UEN
- 20" DS0147-UEN
- 24" DS0148-UEN
- 30" DS0149-UEN
- 32" DS0150-UEN



- 12" DS0127-UEN
- 16" DS0128-UEN
- 20" DS0129-UEN
- 24" DS0130-UEN
- 30" DS0131-UEN
- 32" DS0132-UEN



- 12" DS0139-UEN
- 16" DS0140-UEN
- 20" DS0141-UEN
- 24" DS0142-UEN
- 30" DS0143-UEN
- 32" DS0144-UEN



- 12" DS0163-UEN
- 16" DS0164-UEN
- 20" DS0165-UEN
- 24" DS0166-UEN
- 30" DS0167-UEN
- 32" DS0168-UEN



- 12" DS0169-UEN
- 16" DS0170-UEN
- 20" DS0171-UEN
- 24" DS0172-UEN
- 30" DS0173-UEN
- 32" DS0174-UEN



- 12" DS0175-UEN
- 16" DS0176-UEN
- 20" DS0177-UEN
- 24" DS0178-UEN
- 30" DS0179-UEN
- 32" DS0180-UEN



- 12" DS0133-UEN
- 16" DS0134-UEN
- 20" DS0135-UEN
- 24" DS0136-UEN
- 30" DS0137-UEN
- 32" DS0138-UEN



- 12" DS0121-UEN
- 16" DS0122-UEN
- 20" DS0123-UEN
- 24" DS0124-UEN
- 30" DS0125-UEN
- 32" DS0126-UEN

Prohibited



- 12" DS0193-UEN
- 16" DS0194-UEN
- 20" DS0195-UEN
- 24" DS0196-UEN
- 30" DS0197-UEN
- 32" DS0198-UEN



- 12" DS0187-UEN
- 16" DS0188-UEN
- 20" DS0189-UEN
- 24" DS0190-UEN
- 30" DS0191-UEN
- 32" DS0192-UEN



- 12" DS0211-UEN
- 16" DS0212-UEN
- 20" DS0213-UEN
- 24" DS0214-UEN
- 30" DS0215-UEN
- 32" DS0216-UEN



- 12" DS0205-UEN
- 16" DS0206-UEN
- 20" DS0207-UEN
- 24" DS0208-UEN
- 30" DS0209-UEN
- 32" DS0210-UEN



- 12" DS0199-UEN
- 16" DS0200-UEN
- 20" DS0201-UEN
- 24" DS0202-UEN
- 30" DS0203-UEN
- 32" DS0204-UEN



- 12" DS0181-UEN
- 16" DS0182-UEN
- 20" DS0183-UEN
- 24" DS0184-UEN
- 30" DS0185-UEN
- 32" DS0186-UEN



Directional



- 12"x9" DS0301-UEN
- 24"x18" DS0302-UEN
- 30"x21" DS0303-UEN
- 36"x27" DS0304-UEN
- 50"x32" DS0305-UEN



- 12"x9" DS0326-UEN
- 24"x18" DS0327-UEN
- 30"x21" DS0328-UEN
- 36"x27" DS0329-UEN
- 50"x32" DS0330-UEN



- 12"x9" DS0306-UEN
- 24"x18" DS0307-UEN
- 30"x21" DS0308-UEN
- 36"x27" DS0309-UEN
- 50"x32" DS0310-UEN



- 12"x9" DS0336-UEN
- 24"x18" DS0337-UEN
- 30"x21" DS0338-UEN
- 36"x27" DS0339-UEN
- 50"x32" DS0340-UEN



- 12"x9" DS0331-UEN
- 24"x18" DS0332-UEN
- 30"x21" DS0333-UEN
- 36"x27" DS0334-UEN
- 50"x32" DS0335-UEN



- 12" DS0217-UEN
- 16" DS0218-UEN
- 20" DS0219-UEN
- 24" DS0220-UEN
- 30" DS0221-UEN
- 32" DS0222-UEN



- 12"x9" DS0386-UEN
- 24"x18" DS0387-UEN
- 30"x21" DS0388-UEN
- 36"x27" DS0389-UEN
- 50"x32" DS0390-UEN



- 12" DS0223-UEN
- 16" DS0224-UEN
- 20" DS0225-UEN
- 24" DS0226-UEN
- 30" DS0227-UEN
- 32" DS0228-UEN



- 12"x9" DS0391-UEN
- 24"x18" DS0392-UEN
- 30"x21" DS0393-UEN
- 36"x27" DS0394-UEN
- 50"x32" DS0395-UEN



- 12" DS0259-UEN
- 16" DS0260-UEN
- 20" DS0261-UEN
- 24" DS0262-UEN
- 30" DS0263-UEN
- 32" DS0264-UEN



- 12" DS0277-UEN
- 16" DS0278-UEN
- 20" DS0279-UEN
- 24" DS0280-UEN
- 30" DS0281-UEN
- 32" DS0282-UEN



- 12" DS0283-UEN
- 16" DS0284-UEN
- 20" DS0285-UEN
- 24" DS0286-UEN
- 30" DS0287-UEN
- 32" DS0288-UEN



- 12" DS0289-UEN
- 16" DS0290-UEN
- 20" DS0291-UEN
- 24" DS0292-UEN
- 30" DS0293-UEN
- 32" DS0294-UEN

RECTANGLE		OTHER SHAPES	
12" x 9"	\$11.00	12"	\$14.00
24" x 18"	\$43.00	16"	\$26.00
30" x 21"	\$63.00	20"	\$40.00
36" x 27"	\$97.00	24"	\$58.00
50" x 32"	\$186.00	30"	\$90.00
		32"	\$102.00



- 12" DS0295-UEN
- 16" DS0296-UEN
- 20" DS0297-UEN
- 24" DS0298-UEN
- 30" DS0299-UEN
- 32" DS0300-UEN



- 12" DS0265-UEN
- 16" DS0266-UEN
- 20" DS0267-UEN
- 24" DS0268-UEN
- 30" DS0269-UEN
- 32" DS0270-UEN



- 12" DS0271-UEN
- 16" DS0272-UEN
- 20" DS0273-UEN
- 24" DS0274-UEN
- 30" DS0275-UEN
- 32" DS0276-UEN

+ **Related Products**

Premade Signs
Enhance your safety communication with important premade signs and labels, available in various messages, sizes, and materials.

GraphicProducts.com

Floor Sign Bundles

Enhance and complete your floor marking plan with easy to apply floor shapes. Mark corners, direct foot-traffic, and more with almost no effort.

AED Floor Marking Bundle

Improve the response time in an emergency by making the location of an AED in your facility easy to find. There are no national requirements for AEDs although all 50 states in the U.S. have laws or regulations for AEDs.

KIT DETAILS

- One 18" diameter circular laminated floor sign
- Two 2.5" x 36" lines
- One 2.5" x 24" line with rounded corners
- One optional 2 way (4" x 18") or 3 way (7.5" x 12") wall sign



	SKU	PRICE
KIT ONLY	PFHD3-AED	\$60.99
KIT WITH 2 WAY SIGN	PFHD3-AED2	\$70.99
KIT WITH 3 WAY SIGN	PFHD3-AED3	\$74.99

Electrical Panel Clearance Bundle

Supports compliance with NFPA 70 Article 110.26 for allowing 3' of clearance around electrical equipment that has been operating at 600 1000 volts or less and OSHA 1910.303(g)(1) for 36" of clear and accessible space in areas in front of electrical panels and at least 30" wide.

KIT DETAILS

- One 18" diameter laminated floor sign
- One 5" x 7" electrical panel clearance label (option to add more for each panel)
- One 2" x 50' or 2" x 100' roll of PathFinder Flex Hazard tape



	SKU	PRICE
KIT WITH 50' ROLL	PFHD3-EPC-50	\$64.99
KIT WITH 100' ROLL	PFHD3-EPC-100	\$84.99

Eye Wash Station Bundle

Supports ANSI/ISEA Z358.1 and OSHA regulations for the installation, operation, and maintenance of eye wash stations and showers and 29 CFR 1910.151(c) for work areas in need of immediate emergency use of flushing of the eyes and body.

KIT DETAILS

- One 18" diameter circular laminated floor sign
- Two 2.5" x 36" lines
- One 2.5" x 24" line with rounded corners
- One optional 2 way (4" x 18") or 3 way (7.5" x 12") wall sign



	SKU	PRICE
KIT ONLY	PFHD3-EWS	\$60.99
KIT WITH 2 WAY SIGN	PFHD3-EWS2	\$70.99
KIT WITH 3 WAY SIGN	PFHD3-EWS3	\$74.99



First Aid Kit Floor Sign Bundle

Highly visible floor marking supports compliance with 29 CFR 1910.151 & ANSI/ISEA Z308.1-2015 regulations for mandatory ready availability of first aid supplies and kits.

KIT DETAILS

- One 18" diameter circular laminated floor sign
- Two 2.5" x 36" lines
- One 2.5" x 24" line with rounded corners
- One optional 2 way (4" x 18") or 3 way (7.5" x 12") wall sign



	SKU	PRICE
KIT ONLY	PFHD3-FAK	\$60.99
KIT WITH 2 WAY SIGN	PFHD3-FAK2	\$70.99
KIT WITH 3 WAY SIGN	PFHD3-FAK3	\$74.99

Fire Exit Floor Sign Bundle

This kit includes a variety of durable products designed to enhance existing exit sign and egress marking to serve for an additional safety measure. Compliant with OSHA requirements 29 CFR 1910.34(c) for defining an "exit route." and 29 CFR 1910.37(b) for lighting and marking exit routes.

KIT DETAILS

- One 18" diameter laminated circular floor sign
- Two 2.5" x 36" lines
- One 2.5" x 24" line with rounded corners
- One optional 2 way (4" x 18") or 3 way (7.5" x 12") wall sign



	SKU	PRICE
KIT ONLY	PFHD3-FEX	\$60.99
KIT WITH 2 WAY SIGN	PFHD3-FEX2	\$70.99
KIT WITH 3 WAY SIGN	PFHD3-FEX3	\$74.99

Glow-in-the-Dark Fire Exit Bundle

This kit includes a variety of durable products to enhance existing exit sign and egress marking. Compliant with OSHA requirements 29 CFR 1910.34(c) for defining an "exit route" and 29 CFR 1910.37(b) for lighting and marking exit routes.

KIT DETAILS

- One 18" diameter glow-in-the-dark circular laminated floor sign
- Two 2.5" x 36" glow-in-the-dark lines
- One 2.5" x 24" glow-in-the-dark line with rounded corners
- One optional 2 way (4" x 18") or 3 way (7.5" x 12") glow-in-the-dark wall sign



	SKU	PRICE
KIT ONLY	PFHD3-FEX-GLO	\$114.99
KIT WITH 2 WAY SIGN	PFHD3-FEX2-GLO	\$124.99
KIT WITH 3 WAY SIGN	PFHD3-FEX3-GLO	\$129.99

Fire Extinguisher Floor Sign Bundle

This kit includes a variety of durable products to provide a highly visible border around equipment. Supports compliance with OSHA 1910.157(c)(1) for access to portable fire extinguishers for employees without subjecting them to possible injury.

KIT DETAILS

- One 18" diameter laminated floor sign
- Two 2.5" x 36" lines
- One 2.5" x 24" line with rounded corners
- One optional 2 way (4" x 18") or 3 way (7.5" x 12") wall sign



	SKU	PRICE
KIT ONLY	PFHD3-FE	\$60.99
KIT WITH 2 WAY SIGN	PFHD3-FE2	\$70.99
KIT WITH 3 WAY SIGN	PFHD3-FE3	\$74.99

Pallet Jack Parking Kit

Compliant with OSHA 29 CFR 1910.178(m)(14) that requires forklifts to park a safe distance away from fire aisles, stairways, or fire equipment.

KIT DETAILS

- One 18" diameter circular laminated floor sign
- One 2" x 50' roll of PathFinder Rigid Yellow tape



	SKU	PRICE
PALLET JACK PARKING KIT	PFHD3-PJP	\$49.99

Forklift Parking Kit

Compliant with OSHA 29 CFR 1910.178(m)(14) that requires forklifts to park a safe distance away from fire aisles, stairways, or fire equipment.

KIT DETAILS

- One 18" diameter circular laminated floor sign
- One 2" x 50' roll of PathFinder Rigid Yellow tape



	SKU	PRICE
FORKLIFT PARKING KIT	PFHD3-FP	\$49.99

SDS Binder Floor Sign Bundle

Make it easy for personnel to conveniently locate all needed Safety Data Sheets (SDSs) in your facility and exceed compliance with OSHA's Hazard Communication Standard, 29 CFR 1910.1200, paragraph(g)(8) for readily accessible safety data sheets in work areas.

KIT DETAILS

- One 18" diameter circular laminated floor sign
- Two 2.5" x 36" lines
- One 2.5" x 24" line with rounded corners
- One optional 2 way (4" x 18") or 3 way (7.5" x 12") wall sign



	SKU	PRICE
KIT ONLY	PFHD3-SDS	\$60.99
KIT WITH 2 WAY SIGN	PFHD3-SDS2	\$70.99
KIT WITH 3 WAY SIGN	PFHD3-SDS3	\$74.99

Spill Kit Floor Sign Bundle

Depending on the type of chemicals contained in your facility, a spill kit may be required under OSHA's Hazardous Waste Operations and Emergency Response standards. This kit includes a variety of durable products to support compliance with OSHA.

KIT DETAILS

- One 18" diameter circular laminated floor sign
- Two 2.5" x 36" lines
- One 2.5" x 24" line with rounded corners
- One optional 2 way (4" x 18") or 3 way (7.5" x 12") wall sign



	SKU	PRICE
KIT ONLY	PFHD3-SK	\$60.99
KIT WITH 2 WAY SIGN	PFHD3-SK2	\$70.99
KIT WITH 3 WAY SIGN	PFHD3-SK3	\$74.99



Is your workplace safe? We have the tools and resources to help.



1. Premium Vinyl Tape

2. Arc Flash Two-Color Vinyl Tape

3. Health & Safety Labels

4. HazCom 2012 Labels

5. DuraLabel Toro and Supplies

6. Printable Floor Marking Tape

7. Floor Marking Corner

8. Floor Sign

LIT-PFCATV01 03/20