

## ESL Self laminating wire markers

These wrap-around labels have a clear vinyl "tail" with a thermal transfer printable area for your data. Wrap the label around the wire and when installed, the clear film over-laminates and protects the printed area.



expressMARK



The self laminating feature protects the print from exposure to fluids, moisture and mechanical abrasion. Their ability to withstand exposure to oil, solvents and water makes them ideal for, industrial, commercial, telecom, electrical, electronics and automotive applications.

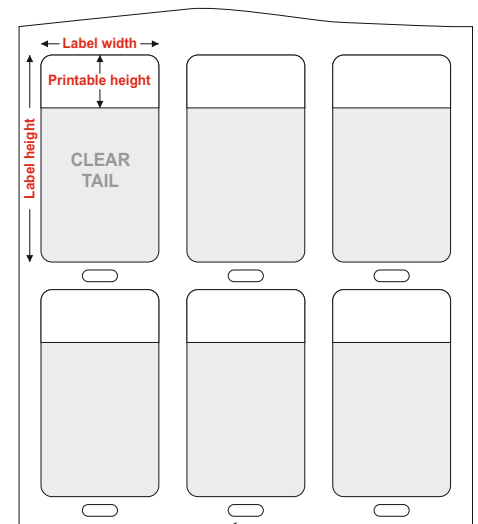
Suitable for use when post termination cable and wire identification is required and frequently used within data centres and on cable harnesses. Supplied with a permanent acrylic based adhesive on a white liner with reference holes for printer sensor detection.

This product "vinyl film" meets the requirements as stated in UL 969. UL file number PGGU2.MH10170

**Ordering information** Popular sizes are shown in the table below. For the full range please visit our website.

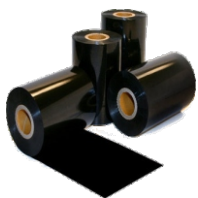
Part Number	Pack Size	Cable Ø Range	Label Width	Label Height	Printable Height	Inner Core
<b>ESL-9-127-095-L25</b>	5000pcs	2.7 - 5.4	<b>12.7</b>	25.4	9.5	76
<b>ESL-9-127-127-L36</b>	10000pcs	4.0 - 7.6		36.5	12.7	76
<b>ESL-9-190-095-L23</b>	10000pcs	3.0 - 4.6	<b>19.1</b>	23.8	9.5	76
<b>ESL-9-203-127-L38</b>	10000pcs	4.0 - 8.3	<b>20.3</b>	38.1	12.7	76
<b>ESL-9-254-095-L19</b>	5000pcs	2.0 - 3.0	<b>25.4</b>	19.1	9.5	76
<b>ESL-9-254-127-L36</b>	5000pcs	4.0 - 7.6		36.5	12.7	76
<b>ESL-9-254-190-L57</b>	2500pcs	6.1 - 12.1		57.2	19.1	76
<b>ESL-9-254-254-L95</b>	2500pcs	8.1 - 22.3		95.3	25.4	76
<b>ESL-9-254-381-L189</b>	2500pcs	12.1 - 48.0		188.9	38.1	76
<b>ESL-9-508-127-L36</b>	2500pcs	4.0 - 7.6	<b>50.8</b>	36.5	12.7	76
<b>ESL-9-508-191-L57</b>	2500pcs	6.1 - 12.1		57.2	19.1	76
<b>ESL-9-508-254-L95</b>	1000pcs	8.1 - 22.3		95.3	25.4	76
<b>ESL-9-508-381-L189</b>	1000pcs	12.1 - 48.0		188.9	38.1	76

All dimensions are in mm



### Central sensor slot

ESL self laminating labels are supplied with a centred sensor slot for ease of loading in printer for printing.



### Recommended Black Printer Ribbon

**1966-RIBBON** 100mm x 300M

Compatible with the following printer models :  
EOS2, EOS1, T2212, T200-IDENT, T3212, T3224,  
TE3112 and TE3124



### External Reel Holder

**PRINTER-UNI-REEL-M**

Designed to hold 76mm core spools of labels allowing them to be backfed to smaller printers. For use with EOS2, EOS1, T2212 and T200-IDENT printers.