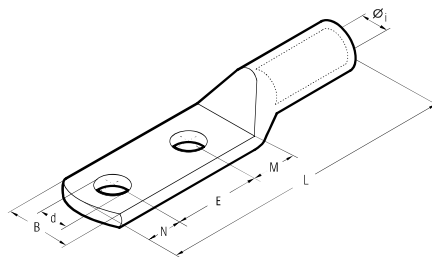


HEAVY DUTY COPPER TUBE TERMINALS

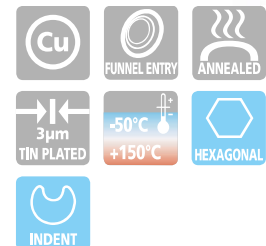
2A-2M

double hole fixing - for Copper conductors



Conductor Size sqmm	Ø Stud mm	Type	Dimensions mm							Quantity Box/Bag	Mechanical Tools	Hydraulic Tools	
			Øi	B	M	N	E	L	d				
50	12	2A10-2M12	10,0	21,0	14,0	12,0	44,5	112,5	13,2	75/25	TN70SE	HT45-E B450ND-BV	RH50 B500 B500ND
70	12	2A14-2M12	11,3	22,0	16,0	14,0	44,5	123,5	13,2	50/25			
	14	2A14-2M14	11,3	25,0	18,0	16,0	44,5	127,5	15,0	75/25	TN120 SE*	HT51	RH60C HT60C B600CND
95	12	2A19-2M12	13,5	25,0	16,0	14,0	44,5	128,0	13,2	50/25			
	14	2A19-2M14	13,5	25,0	18,0	16,0	44,5	132,0	15,0	50/25	TN120 SE*	HT51	RH60C HT60C B600CND
120	12	2A24-2M12	15,2	28,5	16,0	14,0	44,5	135,5	13,2	50/25			
	14	2A24-2M14	15,2	28,5	18,0	16,0	44,5	139,5	15,0	50/25	TN120 SE*	HT51	RH60C HT60C B600CND
	16	2A24-2M16	15,2	28,5	18,0	17,0	44,5	140,5	17,0	50/25			
150	12	2A30-2M12	16,7	31,5	16,0	14,0	44,5	142,5	13,2	30/15	TN120 SE*	HT51	RH60C HT60C B600CND
	14	2A30-2M14	16,7	31,5	18,0	16,0	44,5	146,5	15,0	30/15			
	16	2A30-2M16	16,7	31,5	18,0	17,0	44,5	146,5	15,0	30/15	TN120 SE*	HT51	RH60C HT60C B600CND
185	12	2A37-2M12	19,2	35,5	16,0	14,0	44,5	152,5	13,2	30/15			
	14	2A37-2M14	19,2	35,5	18,0	16,0	44,5	156,5	15,0	30/15	TN120 SE*	HT51	RH60C HT60C B600CND
	16	2A37-2M16	19,2	35,5	19,0	17,0	44,5	158,5	17,0	30/15			
240	12	2A48-2M12	21,1	39,0	16,0	14,0	44,5	153,5	13,2	20/5	TN120 SE*	HT51	RH60C HT60C B600CND
	14	2A48-2M14	21,1	39,0	18,0	16,0	44,5	157,5	15,0	25/5			
	16	2A48-2M16	21,1	39,0	19,0	17,0	44,5	159,5	17,0	25/5	TN120 SE*	HT51	RH60C HT60C B600CND
	12	2A60-2M12	23,7	44,0	20,0	14,0	44,5	174,0	13,2	15/5			
300	14	2A60-2M14	23,7	44,0	22,0	16,0	44,5	178,0	15,0	20/5	TN120 SE*	HT51	RH60C HT60C B600CND
	16	2A60-2M16	23,7	44,0	19,0	17,0	44,5	176,0	17,0	20/5			
	12	2A80-2M12	27,0	51,0	20,0	14,0	44,5	177,5	13,2	10/5	TN120 SE*	HT51	RH60C HT60C B600CND
400	14	2A80-2M14	27,0	51,0	22,0	16,0	44,5	181,5	15,0	10/5			
	16	2A80-2M16	27,0	51,0	22,0	19,0	44,5	184,5	17,0	15/5	TN120 SE*	HT51	RH60C HT60C B600CND
	12	2A100-2M12	30,3	56,5	20,0	14,0	44,5	178,5	13,2	10/5			
500	14	2A100-2M14	30,3	56,5	22,0	16,0	44,5	182,5	15,0	10/1	TN120 SE*	HT51	RH60C HT60C B600CND
	16	2A100-2M16	30,3	56,5	22,0	19,0	44,5	185,5	17,0	8/1			
	12	2A120-2M12*	33,4	61,5	20,0	14,0	44,5	196,5	13,2	15/1	TN120 SE*	HT51	RH60C HT60C B600CND
630	14	2A120-2M14*	33,4	61,5	22,0	19,0	44,5	200,5	15,0	15/1			
	16	2A120-2M16*	33,4	61,5	22,0	19,0	44,5	203,5	17,0	15/1	TN120 SE*	HT51	RH60C HT60C B600CND
	14	2A160-2M14*	38,0	72,0	22,0	19,0	44,5	225,5	15,0	10/1			
800	16	2A160-2M16*	38,0	72,0	24,0	19,0	44,5	227,5	17,0	10/1	TN120 SE*	HT51	RH60C HT60C B600CND
	12	2A200-2M12*	44,0	80,0	20,0	14,0	44,5	233,5	13,2	6/2			
1000	16	2A200-2M16*	44,0	80,0	22,0	19,0	44,5	240,5	17,0	5/1	TN120 SE*	HT51	RH60C HT60C B600CND
	20	2A200-2M20*	44,0	80,0	24,0	23,0	44,5	246,5	21,0	6/2			

*See page 187



The 2A-2M series cable lugs are designed for heavy duty, for grounding structures and equipment both indoors and outdoors and for medium voltage applications up to 35 kV.

2A-2M series terminals are made from high purity Copper tube with a purity greater than 99.9%, and are annealed.

They feature a double length barrel for enhanced electrical and mechanical performance in heavy duty applications.

The double hole fixing ensures greater mechanical stability even in the presence of electrodynamic stresses.

The absence of an inspection hole prevents the entry of water or moisture into the crimped joint making these terminals suitable for outdoor applications.

The terminals are electrolytically Tin plated to prevent atmospheric corrosion.

Details of the appropriate crimping tools and dies are shown on pages 348 to 349.

*Not UL approved