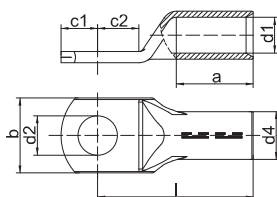




Compression cable lugs to DIN, Cu



- ▶ For round conductors, e.g. to DIN EN 60228 Cl. 1, 2, 5 and 6
- ▶ For non-tension copper cables, e.g. to DIN 48201-1
- ▶ For pre-rounded multi-stranded sector shaped conductors
- ▶ With code number for clear tool assignment
- ▶ To DIN 46235

Characteristics

- Easy to process due to crimp markings
- Annealed material optimises material and crimping properties
- Simple and safe connection due to flat contact surfaces and internal chamfer

Material

- Copper (EN13600)

Surface

- Tin-plated to protect against corrosion

Technical instructions

- Tool: see page 69
- Sleeves for compacted conductors and sleeves for 3-core and 4-core cables, see chapter „Sleeves for compacted conductors and sector shaped conductors - Cu“

Additional information

- Part Number appendix for bright version „BK“
- Item in barrier sealed design upon request
- 10 - 800 mm² IEC-tested
- * = not standardised

Nominal cross section mm ²	Size of bolt diameter	Part No.	Hint	Code	Dimension mm								Weight/100 pcs. ~ kg	Packing unit/pcs
					a	b	d1	d2	d4	c1	c2	l		
6	M 5	101R5		5	10	8.5	3.8	5.3	5.5	6.5	7.5	24	0.24	100
	M 6	101R6		5	10	8.5	3.8	6.4	5.5	7.5	8.0	24	0.30	100
	M 8	101R8	*	5	10	13.0	3.8	8.4	5.5	10.0	10.0	24	0.34	100
10	M 5	102R5		6	10	9.0	4.5	5.3	6.0	7.0	8.5	27	0.37	100
	M 6	102R6		6	10	9.0	4.5	6.4	6.0	7.5	8.5	27	0.36	100
	M 8	102R8	*	6	10	13.0	4.5	8.4	6.0	10.0	10.0	27	0.38	100
16	M 6	103R6		8	20	13.0	5.5	6.4	8.5	7.5	8.0	36	1.19	100
	M 8	103R8		8	20	13.0	5.5	8.4	8.5	10.0	10.0	36	1.22	100
	M 10	103R10		8	20	17.0	5.5	10.5	8.5	12.0	12.0	36	1.30	100
	M 12	103R12	*	8	20	18.0	5.5	13.0	8.5	13.0	13.0	36	1.27	100
25	M 6	104R6		10	20	14.0	7.0	6.4	10.0	7.5	8.0	38	1.51	50
	M 8	104R8		10	20	16.0	7.0	8.4	10.0	10.0	10.0	38	1.54	50
	M 10	104R10		10	20	17.0	7.0	10.5	10.0	12.0	12.0	38	1.62	50
	M 12	104R12		10	20	19.0	7.0	13.0	10.0	13.0	13.0	38	1.66	25
35	M 6	105R6	*	12	20	17.0	8.2	6.4	12.5	7.5	8.0	42	2.77	50
	M 8	105R8		12	20	17.0	8.2	8.4	12.5	10.0	10.0	42	2.85	50
	M 10	105R10		12	20	19.0	8.2	10.5	12.5	12.0	12.0	42	2.84	50
	M 12	105R12		12	20	21.0	8.2	13.0	12.5	13.0	13.0	42	2.79	50
	M 14	105R14	*	12	20	21.0	8.2	15.0	12.5	14.5	14.5	42	2.70	25

see next page

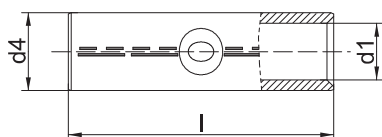


Compression cable lugs to DIN, Cu

Nominal cross section mm ²	Size of bolt diameter	Part No.	Hint	Code	Dimension mm							Weight/100 pcs. ~ kg	Packing unit/pcs	
					a	b	d1	d2	d4	c1	c2			l
50	M 8	106R8		14	28	20.0	10.0	8.4	14.5	10.0	10.0	52	4.46	50
	M 10	106R10		14	28	22.0	10.0	10.5	14.5	12.0	12.0	52	4.48	50
	M 12	106R12		14	28	24.0	10.0	13.0	14.5	13.0	13.0	52	4.40	50
	M 14	106R14	*	14	28	24.0	10.0	15.0	14.5	14.5	14.5	52	4.30	25
	M 16	106R16		14	28	28.0	10.0	17.0	14.5	16.0	16.0	52	4.57	25
70	M 8	107R8		16	28	24.0	11.5	8.4	16.5	10.0	10.0	55	5.92	50
	M 10	107R10		16	28	24.0	11.5	10.5	16.5	12.0	12.0	55	6.02	50
	M 12	107R12		16	28	24.0	11.5	13.0	16.5	13.0	13.0	55	5.89	50
	M 14	107R14	*	16	28	24.0	11.5	15.0	16.5	14.5	14.5	55	5.80	25
	M 16	107R16		16	28	30.0	11.5	17.0	16.5	16.0	16.0	55	6.13	25
95	M 8	108R8	*	18	35	28.0	13.5	8.4	19.0	12.0	12.0	65	9.21	25
	M 10	108R10		18	35	28.0	13.5	10.5	19.0	12.0	12.0	65	8.97	50
	M 12	108R12		18	35	28.0	13.5	13.0	19.0	13.0	13.0	65	8.62	50
	M 14	108R14	*	18	35	28.0	13.5	15.0	19.0	14.5	14.5	65	8.78	25
	M 16	108R16		18	35	32.0	13.5	17.0	19.0	16.0	16.0	65	9.00	50
120	M 10	109R10		20	35	32.0	15.5	10.5	21.0	15.0	16.0	70	11.40	50
	M 12	109R12		20	35	32.0	15.5	13.0	21.0	16.0	17.0	70	11.31	50
	M 14	109R14	*	20	35	32.0	15.5	15.0	21.0	18.0	19.0	70	11.45	25
	M 16	109R16		20	35	32.0	15.5	17.0	21.0	19.0	20.0	70	11.24	50
	M 20	109R20		20	35	38.0	15.5	21.0	21.0	21.0	22.0	70	11.03	25
150	M 10	110R10		22	35	34.0	17.0	10.5	23.5	15.0	16.0	78	16.38	10
	M 12	110R12		22	35	34.0	17.0	13.0	23.5	16.0	17.0	78	16.29	25
	M 14	110R14	*	22	35	34.0	17.0	15.0	23.5	19.0	20.0	78	16.38	10
	M 16	110R16		22	35	34.0	17.0	17.0	23.5	19.0	20.0	78	16.17	10
	M 20	110R20		22	35	40.0	17.0	21.0	23.5	21.0	22.0	78	15.90	10
185	M 10	111R10		25	40	37.0	19.0	10.5	25.5	15.0	16.0	82	18.96	10
	M 12	111R12		25	40	37.0	19.0	13.0	25.5	16.0	17.0	82	18.11	10
	M 14	111R14	*	25	40	37.0	19.0	15.0	25.5	19.0	20.0	82	19.21	10
	M 16	111R16		25	40	37.0	19.0	17.0	25.5	19.0	20.0	82	18.74	25
	M 20	111R20		25	40	40.0	19.0	21.0	25.5	21.0	22.0	82	18.69	10
240	M 12	112R12		28	40	42.0	21.5	13.0	29.0	16.0	17.0	92	27.00	10
	M 14	112R14	*	28	40	42.0	21.5	15.0	29.0	19.0	20.0	92	27.58	10
	M 16	112R16		28	40	42.0	21.5	17.0	29.0	19.0	20.0	92	27.37	25
	M 20	112R20		28	40	45.0	21.5	21.0	29.0	21.0	22.0	92	26.88	10
300	M 12	113R12	*	32	50	46.0	24.5	13.0	32.0	14.0	22.0	100	32.89	5
	M 14	113R14	*	32	50	46.0	24.5	15.0	32.0	19.0	22.0	100	33.29	5
	M 16	113R16		32	50	46.0	24.5	17.0	32.0	19.0	22.0	100	32.94	5
	M 20	113R20		32	50	46.0	24.5	21.0	32.0	22.0	22.0	100	33.24	5
400	M 14	114R14	*	38	70	54.0	27.5	15.0	38.5	25.0	25.0	115	69.38	5
	M 16	114R16		38	70	54.0	27.5	17.0	38.5	25.0	25.0	115	68.54	5
	M 20	114R20		38	70	54.0	27.5	21.0	38.5	25.0	25.0	115	65.40	5
500	M 16	115R16	*	42	70	60.0	31.0	17.0	42.0	25.0	25.0	125	83.31	1
	M 20	115R20		42	70	60.0	31.0	21.0	42.0	25.0	25.0	125	81.58	1
625	M 16	116R16	*	44	80	64.0	34.5	17.0	44.0	25.0	25.0	135	79.60	1
	M 20	116R20		44	80	64.0	34.5	21.0	44.0	25.0	25.0	135	79.69	1
800	M 16	117R16	*	52	100	75.0	40.0	17.0	52.0	30.0	30.0	165	150.00	1
	M 20	117R20		52	100	75.0	40.0	21.0	52.0	30.0	30.0	165	149.00	1
1000	M 16	118R16	*	58	100	83.0	44.0	17.0	58.0	30.0	30.0	165	199.00	1
	M 20	118R20		58	100	83.0	44.0	21.0	58.0	30.0	30.0	165	195.00	1



Compression joints to DIN, Cu



- ▶ For round conductors, e.g. to DIN EN 60228 Cl. 1, 2, 5 and 6 and pre-rounded sector shaped conductors
- ▶ For non-tension copper cables, e.g. to DIN 48201-1
- ▶ To DIN 46267, Part 1
- ▶ With code number for clear tool assignment
- ▶ With crimp markings for correct crimp positioning

Characteristics

- Simple and safe processing due to butt mark
- Annealed material optimises material and crimping properties
- Simple cable entry due to internal chamfer

Material

- Copper (EN13600)

Surface

- Tin-plated to protect against corrosion

Technical instructions

- Sleeves for compacted conductors and sleeves for 3-core and 4-core cables, see chapter „Sleeves for compacted conductors and sector shaped conductors - Cu“
- Tool: see page 69
- Reduction sleeves for connecting unequal cross-sections can be found on page 68

Additional information

- Part Number appendix for bright version „BK“
- 10 - 800 mm² IEC-tested

Nominal cross section mm ²	Part No.	Code	Dimension mm			Weight/ 100 pcs. ~ kg	Packing unit/pcs
			d1	d4	l		
6	121R	5	3.8	5.5	30	0.31	100
10	122R	6	4.5	6.0	30	0.34	100
16	123R	8	5.5	8.5	50	1.45	100
25	124R	10	7.0	10.0	50	1.77	50
35	125R	12	8.2	12.5	50	2.89	50
50	126R	14	10.0	14.5	56	4.26	50
70	127R	16	11.5	16.5	56	5.41	50
95	128R	18	13.5	19.0	70	8.62	25
120	129R	20	15.5	21.0	70	9.66	25
150	130R	22	17.0	23.5	80	14.50	10
185	131R	25	19.0	25.5	85	17.00	10
240	132R	28	21.5	29.0	90	23.41	10
300	133R	32	24.5	32.0	100	29.23	5
400	134R	38	27.5	38.5	150	74.32	5
500	135R	42	31.0	42.0	160	89.09	1
625	136R	44	34.5	44.0	160	79.10	1
800	137R	52	40.0	52.0	200	151.00	1
1000	138R	58	44.0	58.0	200	198.00	1