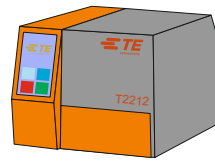
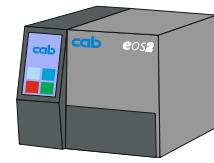


How to install the printer driver

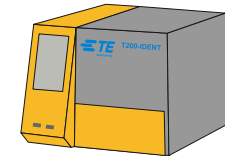
Follow these steps for the printer models shown opposite.



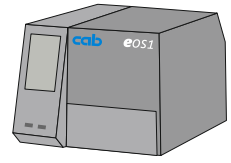
T2212



EOS2



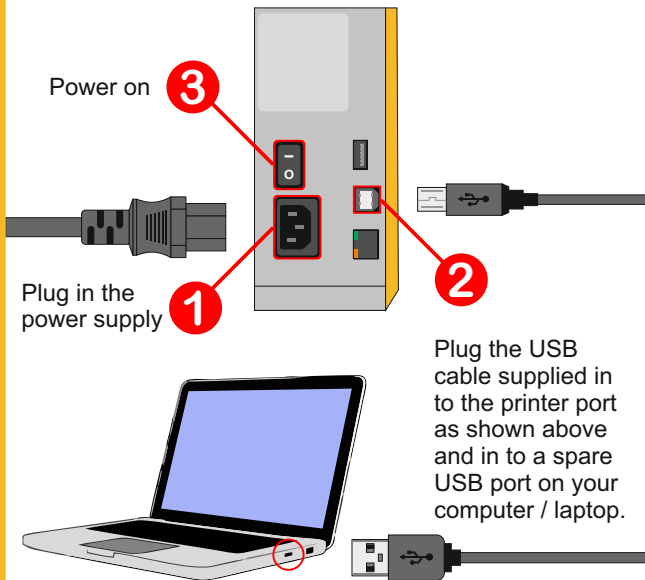
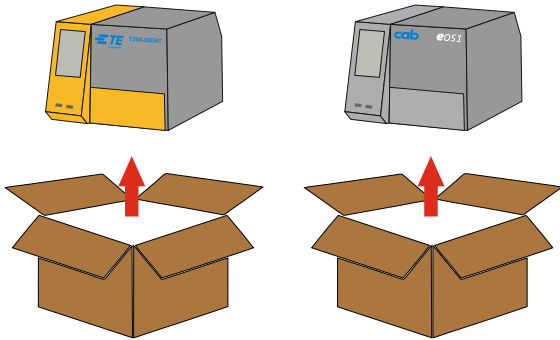
T200-IDENT



EOS1

1. Connect T200 or EOS1

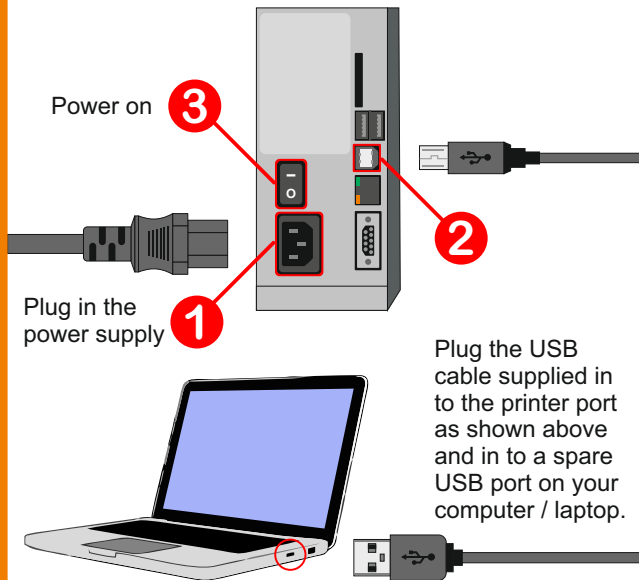
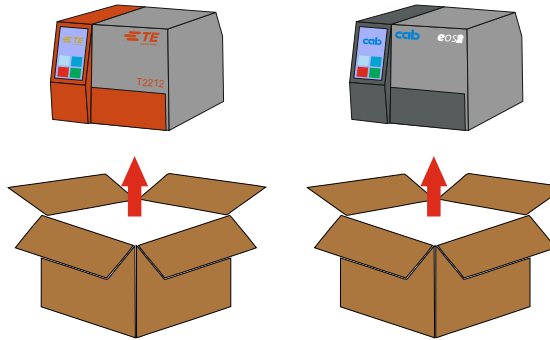
T200-IDENT and EOS1



Note : Always use the same USB port on your PC for the printer you are installing.

1. Connect T2212 or EOS2

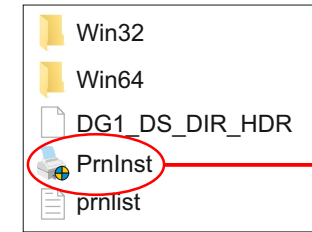
T2212 and EOS2



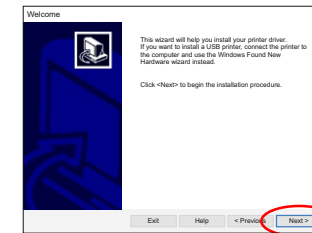
Note : Always use the same USB port on your PC for the printer you are installing.

2. Install Printer Driver

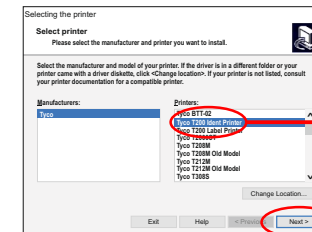
Follow for all 4 printer models



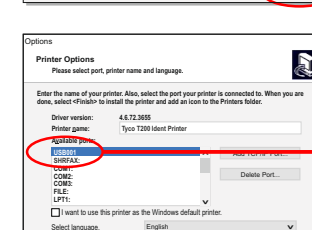
1 Open the print driver folder and double click the print installer icon.



2 When the printer wizard opens click "Next".



3 Click and select the "T200 Ident Printer" (select this driver for all four printer models)



4 Click "Next".

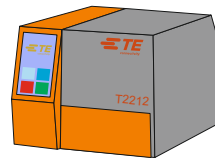
5 Select "USB001". (If you have other USB devices installed you will need to select the latest USB port number)



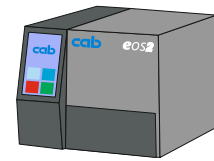
6 Click "Finish".

How to install WinTotal v5.2.09

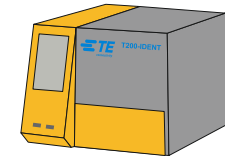
Follow these steps for the printer models shown opposite.



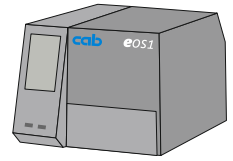
T2212



EOS2

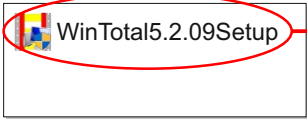


T200-IDENT

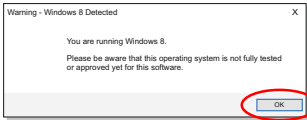


EOS1

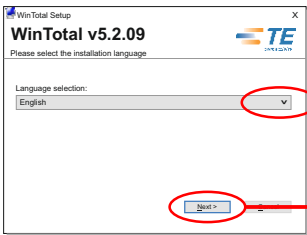
3. Install WinTotal Software



1 Double click the WinTotal setup icon.

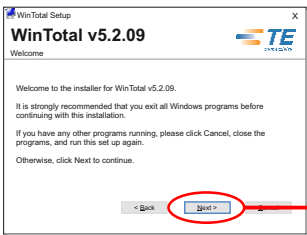


2 Ignore message and click "OK".

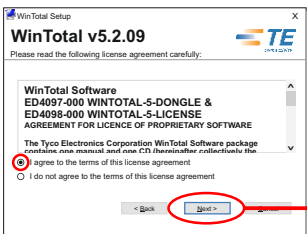


3 Select the language from drop down list.

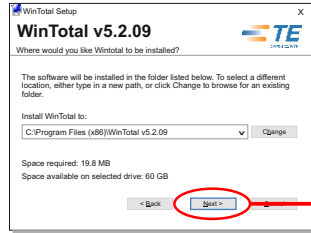
4 Click "Next".



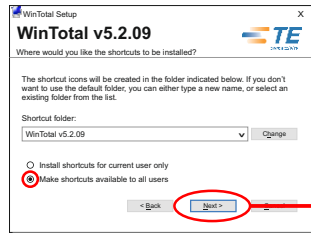
5 Click "Next".



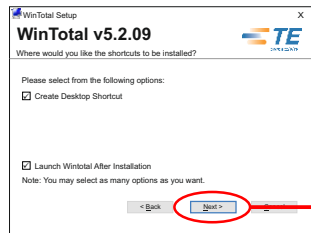
6 Select "I agree to.." and Click "Next".



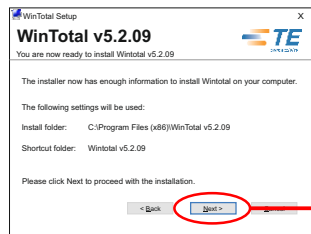
7 Click "Next".



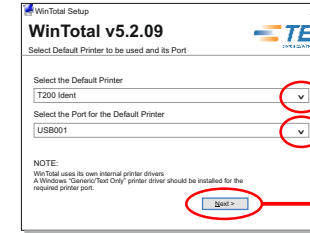
8 Click "Next".



9 Click "Next".



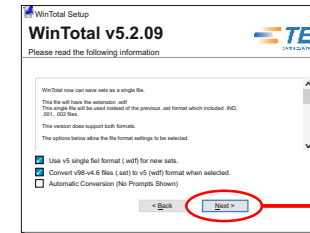
10 Click "Next".



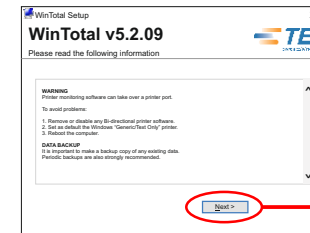
11 Select "T200 Ident" (Use this selection for all four printer models)

12 Select the USB port (Select the port used during the printer install)

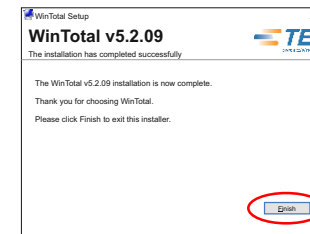
13 Click "Next".



14 Click "Next".



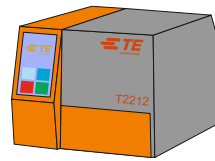
15 Click "Next".



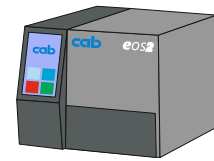
16 Click "Finish".

How to add expressMARK products to WinTotal

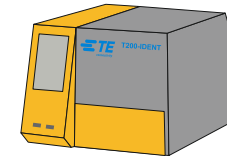
Follow these steps for the printer models shown opposite.



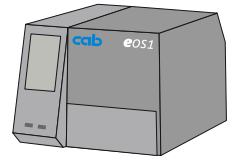
T2212



EOS2

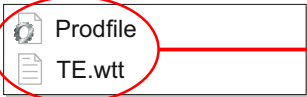


T200-IDENT

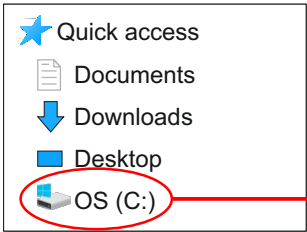


EOS1

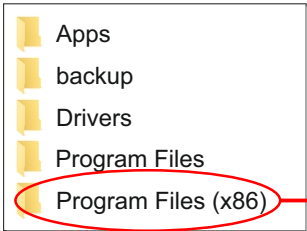
4. Add expressMARK Products



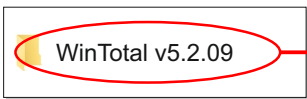
1 Select and "Copy" these two files.



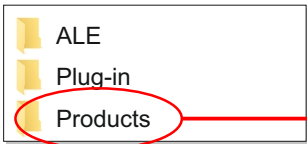
2 Open a File Explorer window and click the "C" drive icon.



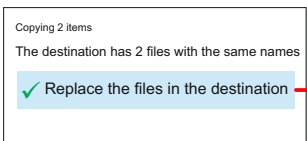
3 Find and double click to open the folder : "Program Files (x86)".



4 Find and double click to open the folder : "WinTotal v5.2.09".



5 Find and double click the "Products" folder.

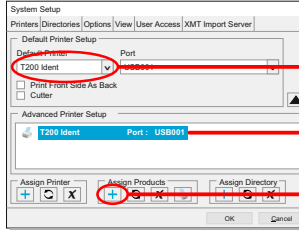


6 Paste the files copied at stage 1 in to the "Products" folder and select when prompted "Replace the files".

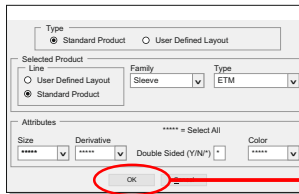
5. Set "ETM" Print Settings



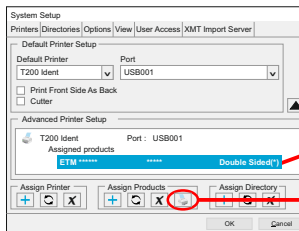
1 Open "System Setup" with this toolbar icon.



2 Check "T200 Ident" is Default Printer.

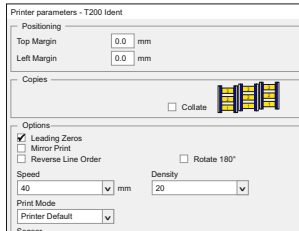


3 Click to highlight the "T200 Ident" printer.



4 Click this "+" icon.

5 Change all settings to match as shown and click "OK" to continue.



6 Click to highlight the "ETM" product range.

7 Click printer icon for "print parameters".

8 Tick the box bottom left to "Enable printer parameters".

9 Set the "Options" to :
- Tick "Leading Zeros"
- Speed : 40
- Density : 20
- Print Mode : Printer Default

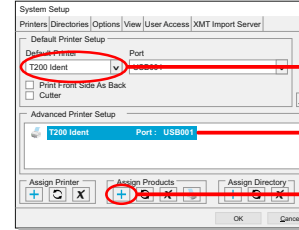


10 Click "OK".

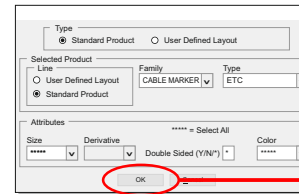
6. Set "ETC" Print Settings



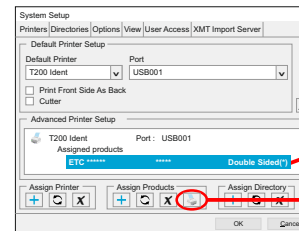
1 Open "System Setup" with this toolbar icon.



2 Check "T200 Ident" is Default Printer.

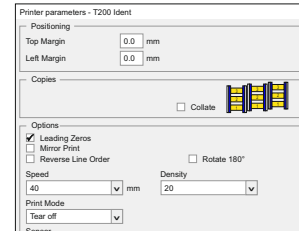


3 Click to highlight the "T200 Ident" printer.



4 Click this "+" icon.

5 Change all settings to match as shown and click "OK" to continue.



6 Click to highlight the "ETC" product range.

7 Click printer icon for "print parameters".

8 Tick the box bottom left to "Enable printer parameters".

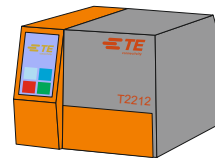
9 Set the "Options" to :
- Tick "Leading Zeros"
- Speed : 40
- Density : 20
- Print Mode : Tear off



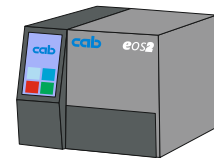
10 Click "OK".

How to order your expressMARK markers

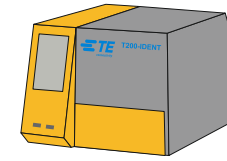
All products listed below are compatible with the printers shown.



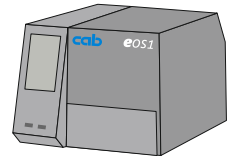
T2212



EOS2



T200-IDENT



EOS1

ETM Wire Markers

50mm sleeves

(below example: 11 point Arial with 20 digits)

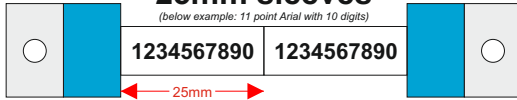


| Part Number | Pack Qty | Dia | Cable* |
|---------------------|----------|------|------------|
| ETM-9-024050-B-M2 | 1000pcs | 2.4 | <0.5 |
| ★ ETM-9-032050-B-M2 | 1000pcs | 3.2 | 0.5 to 1 |
| ★ ETM-9-048050-B-M2 | 1000pcs | 4.8 | 1 to 4 |
| ★ ETM-9-064050-B-M2 | 1000pcs | 6.4 | 4 to 6 |
| ★ ETM-9-095050-B-M2 | 1000pcs | 9.5 | 6 to 16 |
| ETM-9-127050-B-M2 | 1000pcs | 12.7 | 16 to 35 |
| ETM-9-190050-B-M2 | 1000pcs | 19.0 | 35 to 120 |
| ETM-9-254050-A-M2 | 250pcs | 25.4 | 120 to 185 |
| ETM-9-381050-A-M2 | 250pcs | 38.1 | 185 to 400 |

(* tri-rated mm*)

25mm sleeves

(below example: 11 point Arial with 10 digits)



| Part Number | Pack Qty | Dia | Cable* |
|---------------------|----------|------|------------|
| ETM-9-024025-B-M2 | 2000pcs | 2.4 | <0.5 |
| ★ ETM-9-032025-B-M2 | 2000pcs | 3.2 | 0.5 to 1 |
| ★ ETM-9-048025-B-M2 | 2000pcs | 4.8 | 1 to 4 |
| ETM-9-064025-B-M2 | 2000pcs | 6.4 | 4 to 6 |
| ETM-9-095025-B-M2 | 2000pcs | 9.5 | 6 to 16 |
| ETM-9-127025-B-M2 | 2000pcs | 12.7 | 16 to 35 |
| ETM-9-190025-B-M2 | 2000pcs | 19.0 | 35 to 120 |
| ETM-9-254025-A-M2 | 500pcs | 25.4 | 120 to 185 |
| ETM-9-381025-A-M2 | 500pcs | 38.1 | 185 to 400 |

(* tri-rated mm*)

Use "ETM-4-" for yellow



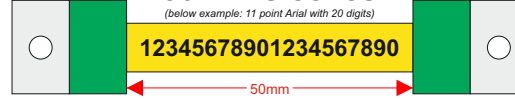
Use "ETM-2-" for red



ETZ Wire Markers

50mm sleeves

(below example: 11 point Arial with 20 digits)

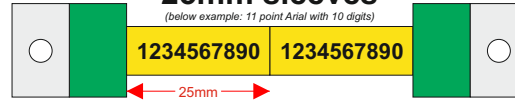


| Part Number | Pack Qty | Dia | Cable* |
|---------------------|----------|------|------------|
| ETZ-4-024050-B-M2 | 1000pcs | 2.4 | <0.5 |
| ★ ETZ-4-032050-B-M2 | 1000pcs | 3.2 | 0.5 to 1 |
| ★ ETZ-4-048050-B-M2 | 1000pcs | 4.8 | 1 to 4 |
| ETZ-4-064050-B-M2 | 1000pcs | 6.4 | 4 to 6 |
| ETZ-4-095050-B-M2 | 1000pcs | 9.5 | 6 to 16 |
| ETZ-4-127050-B-M2 | 1000pcs | 12.7 | 16 to 35 |
| ETZ-4-190050-B-M2 | 1000pcs | 19.0 | 35 to 120 |
| ETZ-4-254050-A-M2 | 250pcs | 25.4 | 120 to 185 |
| ETZ-4-381050-A-M2 | 250pcs | 38.1 | 185 to 400 |

(* tri-rated mm*)

25mm sleeves

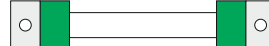
(below example: 11 point Arial with 10 digits)



| Part Number | Pack Qty | Dia | Cable* |
|---------------------|----------|------|------------|
| ETZ-4-024025-B-M2 | 2000pcs | 2.4 | <0.5 |
| ★ ETZ-4-032025-B-M2 | 2000pcs | 3.2 | 0.5 to 1 |
| ★ ETZ-4-048025-B-M2 | 2000pcs | 4.8 | 1 to 4 |
| ETZ-4-064025-B-M2 | 2000pcs | 6.4 | 4 to 6 |
| ETZ-4-095025-B-M2 | 2000pcs | 9.5 | 6 to 16 |
| ETZ-4-127025-B-M2 | 2000pcs | 12.7 | 16 to 35 |
| ETZ-4-190025-B-M2 | 2000pcs | 19.0 | 35 to 120 |
| ETZ-4-254025-A-M2 | 500pcs | 25.4 | 120 to 185 |
| ETZ-4-381025-A-M2 | 500pcs | 38.1 | 185 to 400 |

(* tri-rated mm*)

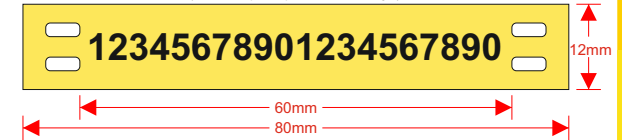
Use "ETZ-9-" for white



ETC Cable Markers

60 x 12mm cable markers

(below example: 16 point Arial with 20 digits)



| Part Number | Pack Qty | Colour |
|------------------|----------|--------|
| ★ ETC-4-012060-C | 500pcs | YELLOW |
| ★ ETC-9-012060-C | 500pcs | WHITE |
| ETC-2-012060-C | 500pcs | RED |
| ETC-5-012060-C | 500pcs | GREEN |
| ETC-6-012060-C | 500pcs | BLUE |

Cable ties for ETC markers



| Part Number | Pack Qty | Dimensions (WxL) |
|---------------|----------|------------------|
| ECT100X2.5B | 100pcs | 2.5 x 100mm |
| ★ ECT200X2.5B | 100pcs | 2.5 x 200mm |
| ECT300X3.6B | 100pcs | 3.6 x 300mm |

Printer Ribbon

For ETM, ETZ and ETC markers

| Part Number | Pack Qty | Dimensions (WxL) |
|-------------|----------|------------------|
| 1966-RIBBON | 1pc | 100mm x 300mm |



Best seller

Look out for the stars!

These indicate our most popular part numbers within each range.