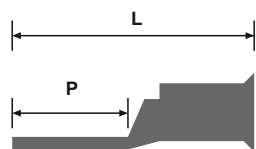
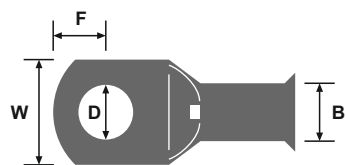


Copper Tube Terminals

Part Number	Wire Size (mm ²)	Pack Qty (pcs)	Stud Size (mm)	Dia (D) (mm)	Width (W) (mm)	Length (L) (mm)	Barrel (B) (mm)	To Edge (F) (mm)	Palm (P) (mm)
ECL6-4	6	20	4	4.5	10	23	3.8	5.0	11.0
ECL6-5	6	20	5	5.2	10	23	3.8	5.0	11.0
ECL6-6	6	20	6	6.5	10	23	3.8	5.0	11.0
ECL6-8	6	20	8	8.2	12	27	3.8	6.0	15.0
ECL6-10	6	20	10	10.5	12	27	3.8	6.0	15.0
ECL10-5	10	20	5	5.2	12	30	4.5	6.0	13.0
ECL10-6	10	20	6	6.5	12	30	4.5	6.0	13.0
ECL10-8	10	20	8	8.2	12	30	4.5	6.0	15.0
ECL10-10	10	20	10	10.5	15	34	4.5	8.5	19.0
ECL10-12	10	20	12	12.7	15	34	4.5	8.5	19.0
ECL16-5	16	20	5	5.2	12	30	5.4	7.0	14.0
ECL16-6	16	20	6	6.5	12	30	5.4	7.0	14.0
ECL16-8	16	20	8	8.2	12	32	5.4	7.0	16.0
ECL16-10	16	20	10	10.5	15	36	5.4	8.0	20.0
ECL16-12	16	20	12	12.7	16	36	5.4	8.0	20.0
ECL25-6	25	20	6	6.5	13	32	6.8	6.0	13.0
ECL25-8	25	20	8	8.2	13	32	6.8	6.0	13.0
ECL25-10	25	20	10	10.5	16	37	6.8	9.0	20.0
ECL25-12	25	20	12	12.7	18	37	6.8	11.0	24.0
ECL35-6	35	10	6	6.5	15	35	8.2	9.0	18.0
ECL35-8	35	10	8	8.2	15	35	8.2	9.0	18.0
ECL35-10	35	10	10	10.5	15	41.5	8.2	9.0	18.0
ECL35-12	35	10	12	12.7	18	41.5	8.2	9.0	18.0
ECL35-14	35	10	14	14.7	18	41.5	8.2	9.0	18.0
ECL50-6	50	10	6	6.5	18	43	9.5	10.0	21.0
ECL50-8	50	10	8	8.2	18	43	9.5	10.0	21.0
ECL50-10	50	10	10	10.5	18	43	9.5	10.0	21.0
ECL50-12	50	10	12	12.7	18	43	9.5	10.0	21.0
ECL50-14	50	10	14	14.7	18	43	9.5	10.0	21.0
ECL50-16	50	10	16	17.0	18	43	9.5	10.0	21.0
ECL70-6	70	10	6	6.5	21	50	11.2	12.0	25.0
ECL70-8	70	10	8	8.2	21	50	11.2	12.0	25.0
ECL70-10	70	10	10	10.5	21	50	11.2	12.0	25.0
ECL70-12	70	10	12	12.7	21	50	11.2	12.0	25.0
ECL70-14	70	10	14	14.7	21	50	11.2	12.0	25.0
ECL70-16	70	10	16	17.0	21	50	11.2	12.0	25.0
ECL95-8	95	10	8	8.2	25	55	13.5	13.0	26.0
ECL95-10	95	10	10	10.5	25	55	13.5	13.0	26.0
ECL95-12	95	10	12	12.7	25	55	13.5	13.0	26.0
ECL95-14	95	10	14	14.7	25	55	13.5	13.0	26.0
ECL95-16	95	10	16	17.0	25	55	13.5	13.0	26.0
ECL95-20	95	10	20	21.0	25	55	13.5	13.0	26.0
ECL120-8	120	10	8	8.2	28	60	15.0	14.0	28.0
ECL120-10	120	10	10	10.5	28	60	15.0	14.0	28.0
ECL120-12	120	10	12	12.7	28	60	15.0	14.0	28.0
ECL120-14	120	10	14	14.7	28	60	15.0	14.0	28.0
ECL120-16	120	10	16	17.0	28	60	15.0	14.0	28.0



Technical Datasheet



Material

Body : Copper

Plating : Bright electro tin

Rating

Max voltage rating: 3.3kV

Features

Bell mouth for easy cable entry

Excellent conductivity

Corrosion resistant

Suitable for heavy duty applications

Inspection hole

Tooling

Ratchet action crimp tools

Ergonomic anti-slip handles

Terminal range : 1.5 to 10mm²

Tool length: 275mm

Weight: 0.6 kgs

Part Number : **ECT16**



Terminal range : 6 to 50mm²

Tool length: 390mm

Weight: 1.3 kgs

Part Number : **ECT50**



Terminal range : 25 to 150mm²

Tool length: 620mm

Weight: 4.0 kgs

Part Number : **ECT150**



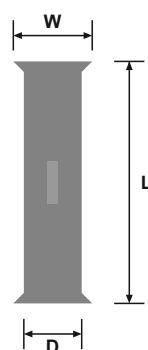
To purchase these products visit us online at www.expresselectrical.co.uk

Copper Tube Terminals (continued)

Part Number	Wire Size (mm ²)	Pack Qty (pcs)	Stud Size (mm)	Dia (D) (mm)	Width (W) (mm)	Length (L) (mm)	Barrel (B) (mm)	To Edge (F) (mm)	Palm (P) (mm)
ECL150-8	150	5	8	8.2	30	69	16.5	16.0	32.0
ECL150-10	150	5	10	10.5	30	69	16.5	16.0	32.0
ECL150-12	150	5	12	12.7	39	69	16.5	16.0	32.0
ECL150-14	150	5	14	14.7	30	69	16.5	16.0	32.0
ECL150-16	150	5	16	17.0	30	69	16.5	16.0	32.0
ECL150-20	150	5	20	21.0	30	69	16.5	16.0	32.0
ECL185-10	185	5	10	10.5	34	78	18.5	17.0	34.0
ECL185-12	185	5	12	12.7	34	78	18.5	17.0	34.0
ECL185-14	185	5	14	14.7	34	78	18.5	17.0	34.0
ECL185-16	185	5	16	17.0	34	78	18.5	17.0	34.0
ECL185-20	185	5	20	21.0	34	78	18.5	17.0	34.0
ECL240-10	240	5	10	10.5	38	92	21.0	20.0	40.0
ECL240-12	240	5	12	12.7	38	92	21.0	20.0	40.0
ECL240-14	240	5	14	14.7	38	92	21.0	20.0	40.0
ECL240-16	240	5	16	17.0	38	92	21.0	20.0	40.0
ECL240-20	240	5	20	21.0	38	92	21.0	20.0	40.0
ECL300-10	300	1	10	10.5	41	97	23.0	22.0	40.0
ECL300-12	300	1	12	12.7	41	97	23.0	22.0	40.0
ECL300-14	300	1	14	14.7	41	97	23.0	22.0	40.0
ECL300-16	300	1	16	17.0	41	97	23.0	22.0	40.0
ECL400-12	400	1	12	12.7	48	108	27.0	24.0	44.0
ECL400-14	400	1	14	14.7	48	108	27.0	24.0	44.0
ECL400-16	400	1	16	17.0	48	108	27.0	24.0	44.0
ECL500-14	500	1	14	14.7	53.5	124	30.0	25.0	56.5
ECL500-16	500	1	16	17.0	53.5	124	30.0	25.0	56.5
ECL500-20	500	1	20	21.0	53.5	124	30.0	25.0	56.5

Copper Tube Butt connectors

Part Number	Wire Size (mm ²)	Pack Qty (pcs)	Dia (D)	Width (W)	Length (L)
ECB6	6	50	3.8	5.5	15
ECB10	10	25	4.5	6.2	20
ECB16	16	25	5.4	7.1	20
ECB25	25	25	6.8	8.8	32
ECB35	35	25	8.2	10.6	36
ECB50	50	10	9.5	12.4	40
ECB70	70	10	11.2	14.7	45
ECB95	95	10	13.5	17.4	45
ECB120	120	4	15.0	19.4	45
ECB150	150	4	16.5	21.2	55
ECB185	185	4	18.5	23.5	60
ECB240	240	4	21.0	26.5	80
ECB300	300	4	23.5	30.0	85
ECB400	400	4	28.5	36.5	85
ECB500	500	2	30.0	39.0	100
ECB630	630	2	35.0	45.0	110



Technical Datasheet



Material

Body : Copper

Plating : Bright electro tin

Rating

Max voltage rating: 3.3kV

Features

Bell mouth for easy cable entry

Excellent conductivity

Corrosion resistant

Suitable for heavy duty applications

Inspection hole

Tooling

Ratchet action crimp tools

Ergonomic anti-slip handles

Terminal range : 1.5 to 10mm²

Tool length: 275mm

Weight: 0.6 kgs

Part Number : **ECT16**



Terminal range : 6 to 50mm²

Tool length: 390mm

Weight: 1.3 kgs

Part Number : **ECT50**



Terminal range : 25 to 150mm²

Tool length: 620mm

Weight: 4.0 kgs

Part Number : **ECT150**

