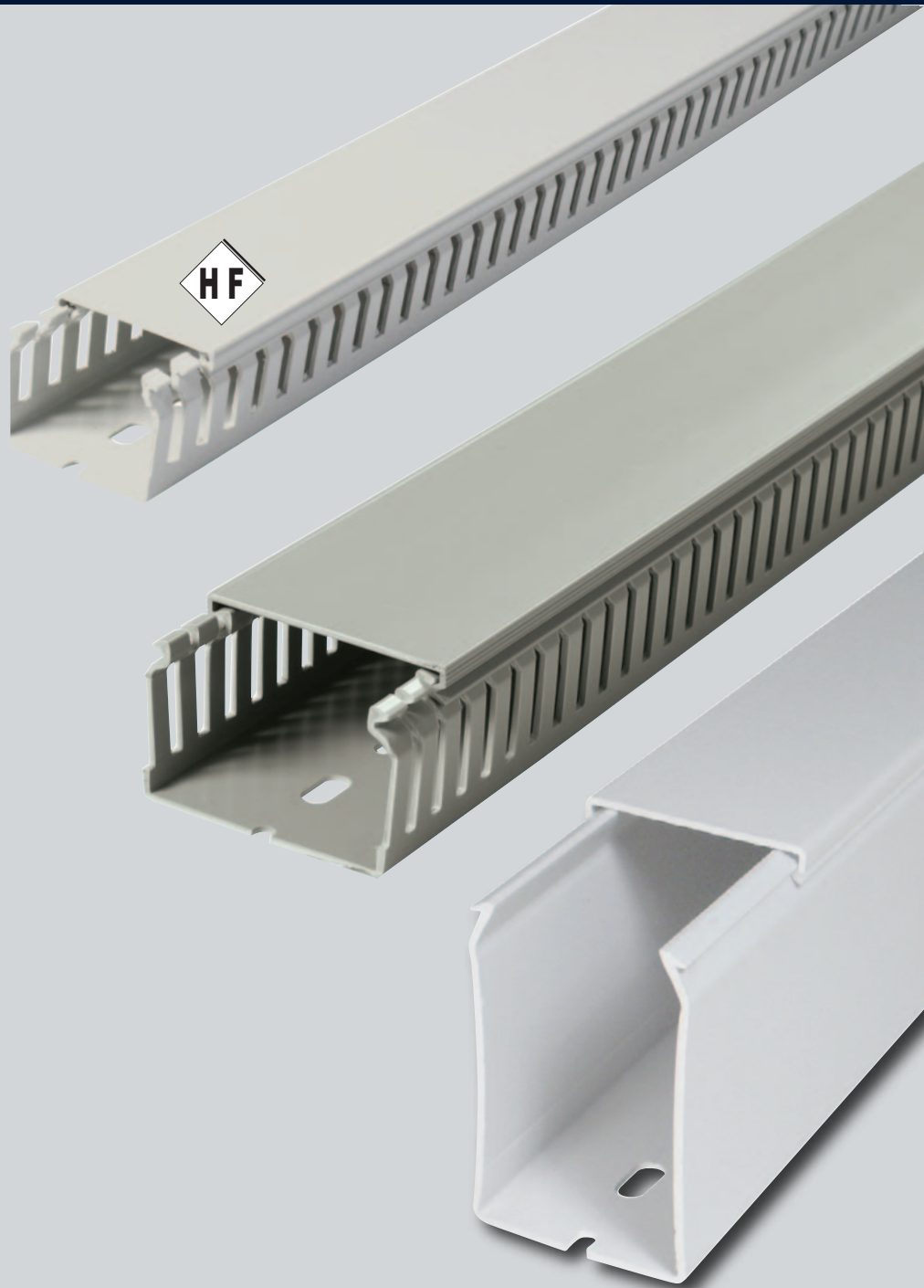




CABLE TRUNKING

GF-DIN, GF-DIN-SH and GF-DIN-SH-S

11/20 - 0960.0003.0017 E



SES-STERLING [®]
www.ses-sterling.com



GF-DIN et GF-DIN SH A7/5

with slots and base punching

| | | |
|-------------------------------|--------------------------------|--|
| Material: | rigid PVC | PC/ABS |
| Colour: | grey - black | light grey |
| Operating temperature: | -5 to +65°C | -25 to +90°C |
| Volume resistivity: | 10 ¹⁵ Ω.cm | 10 ¹⁵ Ω.cm |
| Dielectric strength: | 15 kV/mm | 35 kV/mm |
| Flame resistance: | V0 UL94 | V0 UL94 |
| Specifications: | - | EN 45545-2 - NF F16-101/102 - DIN 5510-2 |
| Standard length: | 2 meters | 2 meters |
| Double sided adhesive: | upon request | upon request |
| Minimum delivery: | 1 complete packing (with lids) | 1 complete packing (with lids) |

| | PVC | | | | | | PC/ABS | | | | | |
|--------------------|---------------|----|---------------|----|------|------|---------------|----|---------------|----|------|------|
| | trunking | m | lid | m | mm | mm | trunking | m | lid | m | mm | mm |
| GF-DIN 25 x 25 | 0845 0031 *** | 48 | 0845 0640 *** | 48 | 23 | 23 | 0848 0031 013 | 48 | 0848 0640 013 | 12 | 23 | 23 |
| GF-DIN 37,5 x 25 | 0845 0041 *** | 48 | 0845 0640 *** | 48 | 35,5 | 23 | 0848 0041 013 | 48 | 0848 0640 013 | 12 | 35,5 | 23 |
| GF-DIN 37,5 x 37,5 | 0845 0051 *** | 24 | 0845 0645 *** | 24 | 35,5 | 35,5 | 0848 0051 013 | 24 | 0848 0645 013 | 12 | 35,5 | 35,5 |
| GF-DIN 37,5 x 50 | 0845 0061 *** | 24 | 0845 0650 *** | 24 | 35,5 | 48 | 0848 0053 013 | 24 | 0848 0650 013 | 12 | 35,5 | 48 |
| GF-DIN 50 x 25 | 0845 0131 *** | 48 | 0845 0640 *** | 48 | 48 | 23 | 0848 0131 013 | 48 | 0848 0640 013 | 12 | 48 | 23 |
| GF-DIN 50 x 37,5 | 0845 0141 *** | 24 | 0845 0645 *** | 24 | 48 | 35,5 | 0848 0141 013 | 24 | 0848 0645 013 | 12 | 48 | 35,5 |
| GF-DIN 50 x 50 | 0845 0151 *** | 24 | 0845 0650 *** | 24 | 48 | 48 | 0848 0151 013 | 24 | 0848 0650 013 | 12 | 48 | 48 |
| GF-DIN 50 x 75 | 0845 0152 *** | 24 | 0845 0655 *** | 24 | 48 | 73 | 0848 0152 013 | 24 | 0848 0655 013 | 12 | 48 | 73 |
| GF-DIN 50 x 100 | 0845 0153 *** | 12 | 0845 0630 *** | 12 | 48 | 98 | 0848 0153 013 | 12 | 0848 0660 013 | 12 | 48 | 98 |
| GF-DIN 50 x 125 | 0845 0154 *** | 12 | 0845 0665 *** | 12 | 48 | 123 | | | | | | |
| GF-DIN 75 x 25 | 0845 0211 *** | 48 | 0845 0640 *** | 48 | 73 | 25 | 0848 0211 013 | 48 | 0848 0640 013 | 12 | 73 | 23 |
| GF-DIN 75 x 37,5 | 0845 0221 *** | 24 | 0845 0645 *** | 24 | 73 | 35,5 | 0848 0221 013 | 24 | 0848 0645 013 | 12 | 73 | 35,5 |
| GF-DIN 75 x 50 | 0845 0231 *** | 24 | 0845 0650 *** | 24 | 73 | 48 | 0848 0231 013 | 24 | 0848 0650 013 | 12 | 73 | 48 |
| GF-DIN 75 x 75 | 0845 0241 *** | 24 | 0845 0655 *** | 24 | 73 | 73 | 0848 0241 013 | 24 | 0848 0655 013 | 12 | 73 | 73 |
| GF-DIN 75 x 100 | 0845 0251 *** | 12 | 0845 0630 *** | 12 | 73 | 98 | 0848 0251 013 | 12 | 0848 0660 013 | 12 | 73 | 98 |
| GF-DIN 75 x 125 | 0845 0261 *** | 12 | 0845 0665 *** | 12 | 73 | 123 | 0848 0261 013 | 12 | 0848 0665 013 | 12 | 73 | 123 |
| GF-DIN 100 x 50 | 0845 0286 *** | 24 | 0845 0650 *** | 24 | 100 | 48 | | | | | | |
| GF-DIN 100 x 75 | 0845 0296 *** | 12 | 0845 0655 *** | 24 | 100 | 73 | | | | | | |
| GF-DIN 100 x 100 | 0845 0268 *** | 12 | 0845 0630 *** | 12 | 100 | 98 | | | | | | |
| GF-DIN 100 x 150 | 0845 0269 *** | 12 | 0845 0637 *** | 12 | 100 | 150 | | | | | | |

GF-DIN-SH-S

plain and with base punching

| | |
|-------------------------------|--|
| Material: | PC/ABS |
| Colour: | light grey |
| Operating temperature: | -25 to +90°C |
| Volume resistivity: | 10 ¹⁵ Ω.cm |
| Dielectric strength: | 35 kV/mm |
| Flame resistance: | V0 UL94 |
| Specifications: | EN 45545-2 - NF F16-101/102 - DIN 5510-2 |
| Standard length: | 2 meters |
| Double sided adhesive: | upon request |
| Minimum delivery: | 1 complete packing (with lids) |

| | PPE/PS | | | | | |
|--------------------|---------------|----|---------------|----|------|------|
| | trunking | m | lid | m | mm | mm |
| GF-DIN 25 x 25 | 0848 0331 013 | 48 | 0848 0640 013 | 12 | 23 | 23 |
| GF-DIN 37,5 x 25 | 0848 0341 013 | 48 | 0848 0640 013 | 12 | 35,5 | 23 |
| GF-DIN 37,5 x 37,5 | 0848 0351 013 | 24 | 0848 0645 013 | 12 | 35,5 | 35,5 |
| GF-DIN 37,5 x 50 | | | | | | |
| GF-DIN 50 x 25 | 0848 0431 013 | 48 | 0848 0640 013 | 12 | 48 | 23 |
| GF-DIN 50 x 37,5 | 0848 0441 013 | 24 | 0848 0645 013 | 12 | 48 | 35,5 |
| GF-DIN 50 x 50 | 0848 0451 013 | 24 | 0848 0650 013 | 12 | 48 | 48 |
| GF-DIN 50 x 75 | 0848 0452 013 | 24 | 0848 0655 013 | 12 | 48 | 73 |
| GF-DIN 50 x 100 | 0848 0453 013 | 12 | 0848 0660 013 | 12 | 48 | 98 |
| GF-DIN 50 x 125 | | | | | | |
| GF-DIN 75 x 25 | 0848 0511 013 | 48 | 0848 0640 013 | 12 | 73 | 23 |
| GF-DIN 75 x 37,5 | 0848 0521 013 | 24 | 0848 0645 013 | 12 | 73 | 35,5 |
| GF-DIN 75 x 50 | 0848 0531 013 | 24 | 0848 0650 013 | 12 | 73 | 48 |
| GF-DIN 75 x 75 | 0848 0541 013 | 24 | 0848 0655 013 | 12 | 73 | 73 |
| GF-DIN 75 x 100 | 0848 0551 013 | 12 | 0848 0660 013 | 12 | 73 | 98 |
| GF-DIN 75 x 125 | 0848 0561 013 | 12 | 0848 0665 013 | 12 | 73 | 123 |

Accessoires



• **Rivets PLIO and rivet punch SES-GO**
For quick fastening of trunking and other products.



• **Lock stud PLIO-GZ**
For a fast fixing of our GF-DIN trunking n base plates or aluminium profiles.

• **Clamping bracket PLIO-GZ**
For clamping GF-DIN trunking to metallic rails, profiles or perforated bases.



• **Retaining clip PLIO-GX**
For keeping cables in trunking.

• **Bridging clip PLIO-GX**
For keeping cables in trunking. Allow complete or partial change of cabling at any time without removal of the clip.



• **Label holder PLIO PE**
To identify cable outlets. The label holders are made of only one part with integrated locking cover.



• **Label holder PLIO-15 and PLIO-30**
To identify cable outlets combined with PES supports.



• **DC 125 cutter**
For quick and clean cutting of SES trunking with slots.

