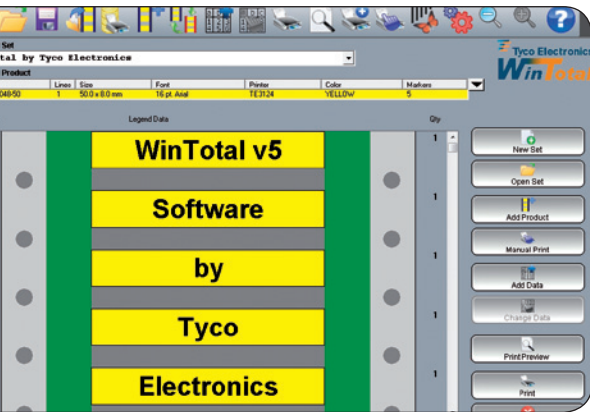


Introducing WinTotal v5 Software

Tyco Electronics launches a new version of the WinTotal software. The WinTotal software series supports high quality wire and harness identification and basic labeling printing applications. The WinTotal software works with all current Tyco Electronics identification products and printers. It has a number of new features and benefits making it a more powerful and user-friendly identification and labeling software solution.



KEY FEATURES

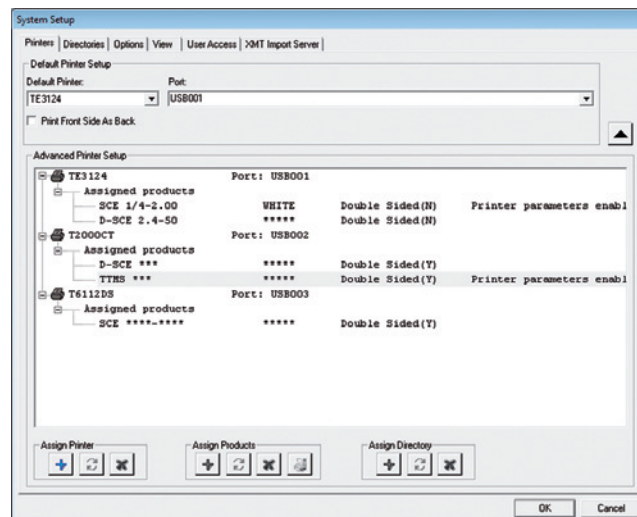
- Multilingual user interface: English, French, German, Spanish, Italian, Dutch and Norwegian
- Pre-loaded with Tyco Electronics identification templates
- Graphical user interface with WYSIWYG (What You See Is What You Get) display
- Simplified operator interface with powerful functions
- Built-in printer drivers for Tyco Electronics identification printers
- Multiple Application Port Printing (MAPP): Product assigned to specified printers for automatic batch printing
- Import or print directly from external data sources, e.g. txt, xls, Access databases
- Advanced template design allows creation of graphics, logos, bar codes, lines, rectangles and circles
- Support for Windows 2000, Windows XP, Windows Vista and Windows 7 operating systems (32bit and 64bit)

BASIC FUNCTIONALITIES

- Toolbar design, 'Keypad' buttons, 'Zoom In/Out' functions
- 'Selected Product' list box
- Simplified user interface configurable for both basic and advanced users
- Single file data format: One file now replaces multiple files used in older versions (old structure still supported)
- 'System Setup' screen with simplified printer selection: 'Advanced Printer Setup' function shows all settings in one location for simplified use

Name	Lines	Size	Font	Printer	Color	Markers
SCE 1/50-2.00	1	48.0 x 60.0 mm	10 pt. Arial	TE3124	RED	100
SCE 1-2.00	1	48.0 x 40.0 mm	10 pt. Arial	TE3124	WHITE	100
SCE 1.50-2.00	1	48.0 x 60.0 mm	10 pt. Arial	TE3124	WHITE	100
SCE 1/2-2.00	1	48.0 x 20.0 mm	10 pt. Arial	TE3124	WHITE	100
SCE 1/4-2.00	1	48.0 x 11.0 mm	10 pt. Arial	TE3124	YELLOW	100
SCE 1/4-2.00	1	48.0 x 11.0 mm	10 pt. Arial	TE3124	WHITE	100
SCE 1/8-2.00	1	48.0 x 6.0 mm	10 pt. Arial	T6112DS	YELLOW	100
SCE 1/8-2.00	1	48.0 x 6.0 mm	10 pt. Arial	TE3124	WHITE	100
SCE 3/16-2.00	1	48.0 x 8.0 mm	10 pt. Arial	TE3124	YELLOW	100
SCE 3/16-2.00	1	48.0 x 8.0 mm	10 pt. Arial	TE3124	WHITE	100
SCE 3/4-2.00	1	48.0 x 30.0 mm	10 pt. Arial	TE3124	WHITE	100
SCE 3/8-2.00	1	48.0 x 15.0 mm	10 pt. Arial	TE3124	WHITE	100

'Selected Product' list box displays more information



Printer configuration screen using MAPP configuration

DATA MANAGEMENT

- Import data from ASCII or XMT files or from a Windows database
- 'Database Printing' function for printing data without importing into WinTotal software
- 'Preview' option to review the import configuration without importing

TEMPLATES

- 'Rotation' option when creating products
- File format supporting importing and exporting of 'User Defined Layouts'

SERIALIZATION (AUTO NUMBERING/COUNTERS)

- 'Auto Numbering Product' function allows product with serializations that update after printing

PRINTING

- Printer parameters are selectable from the print screen such as 'Speed' and 'Density'
- 'Print Preview' option

SUPPORTED PRINTERS

Standard Printers	Legacy Printers
T200OCT-PRINTER	CAB A4+300
T208M-PRINTER	EPSON LQ - DOT MATRIX
T212M-PRINTER	T308S-PRINTER
T312S-PRINTER	T312Z
T312M-PRINTER	T408M
T6112DS-PRINTER	T412S
TE3112-PRINTER	T424S
TE3124-PRINTER	T612M-DS-PRINTER
LMS 9000 Laser Engraving	ZEBRA 170XI
ITS BTT-02 - Card Printer	WHEELWRITER - Daisy Wheel

ORDERING INFORMATION

Order Description	PCN
WINTOTAL-5-DONGLE	ED4097-000 (recommended)
WINTOTAL-5-LICENCE	ED4098-000

WINTOTAL-5-DONGLE is supplied with a USB key (dongle). This is the license. Once inserted, the program is fully functional. If not, the program will function in demo mode. Transferring the license between multiple computers or when upgrading computers only requires the key to be inserted.

WINTOTAL-5-LICENCE is supplied with a serial number which requires to be registered via the internet. This serial number can only be registered to one computer. This option is only recommended if a USB port is not available.

A WinTotal software **demo version can be downloaded** using the following link: <http://identification.tycoelectronics.com/03/software.asp>. A full list of features is accessible in the software's help file.

For full details of the software capabilities please refer to the technical datasheet **TTDS-001 V6**.

For **WinTotal v5 software**, Tyco Electronics recommends the purchase of a dongle version. A one license version is also available.

EPSON is a trademark of SEIKO EPSON KABUSHIKI KAISHA. Zebra is a registered trademark of Zebra Technologies.