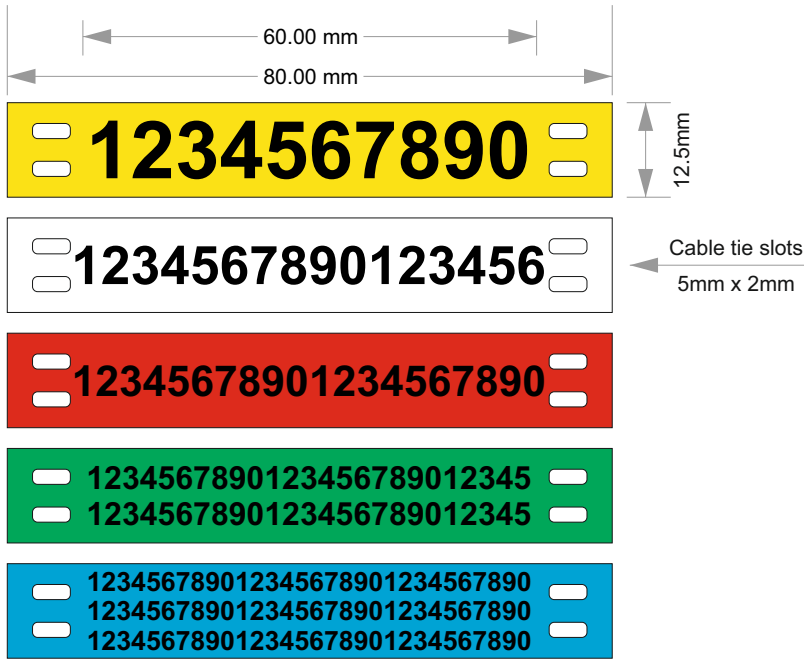
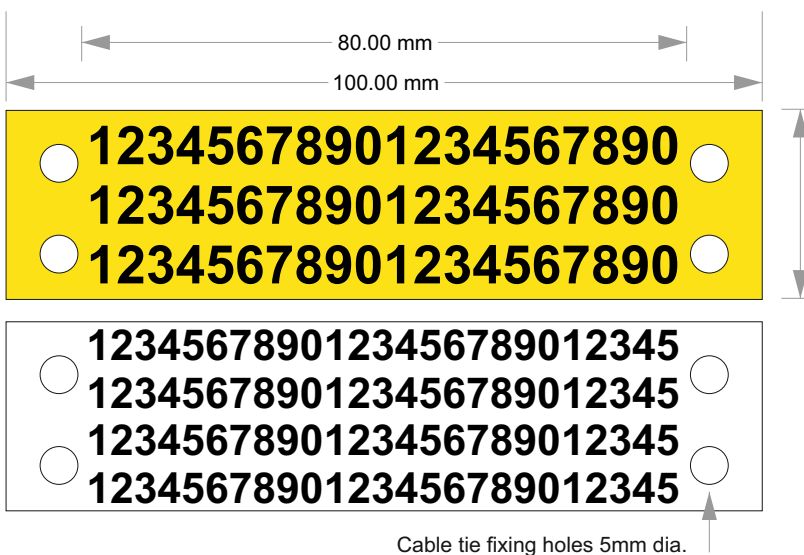


ETC Tie-on Cable Markers (continuous format)
Characters per marker guide

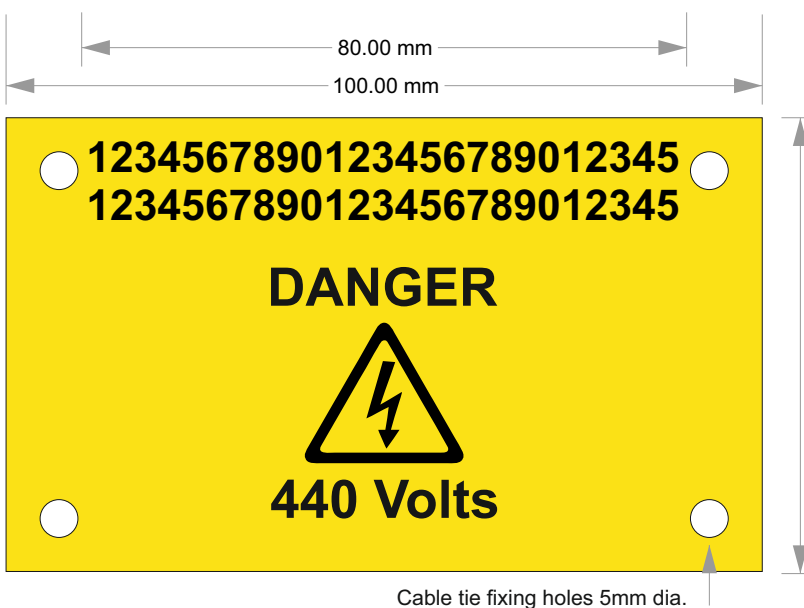
A selection of fonts sizes are shown below, showing the maximum number of characters available per marker. Font used is Arial bold.



Font size	Font Height	Characters per line	Max lines
ETC-(colour)-012060-C			
30	7.5mm	10	1
20	5mm	16	1
16	4mm	20	2
12	3mm	25	3
10	2.5mm	30	3



ETC-(colour)-025080-B			
20	5mm	20	3
16	4mm	25	4



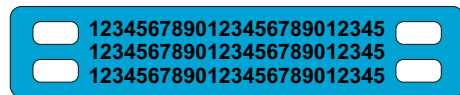
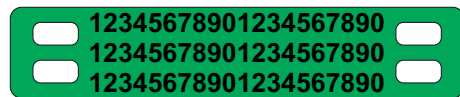
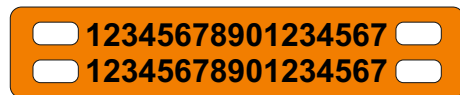
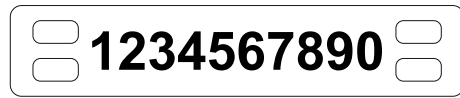
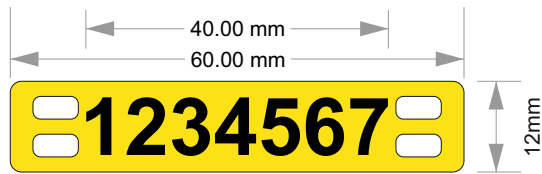
ETC-(colour)-060080-B			
16	4mm	25	9
This size of label is popular for identifying larger cable bundles, pipes, and conduit, and often printed with a combination of symbols and text.			



ETC Tie-on Cable Markers (ladder format)

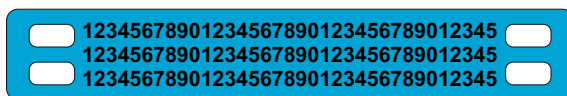
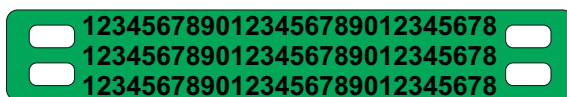
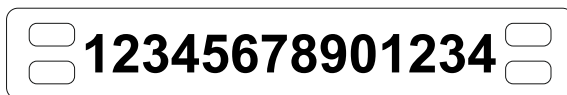
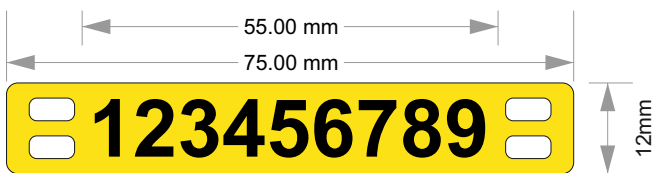
Characters per marker guide

A selection of fonts sizes are shown below, showing the maximum number of characters available per marker. Font used is Arial bold.



Cable tie slots
5mm x 3mm

Font size	Font Height	Characters per line	Max lines
ETC-(colour)-012040-D			
30	7.5mm	7	1
20	5mm	10	1
15	4mm	13	2
12	3mm	17	2
10	2.5mm	20	3
8	2mm	25	3



Cable tie slots
5mm x 3mm

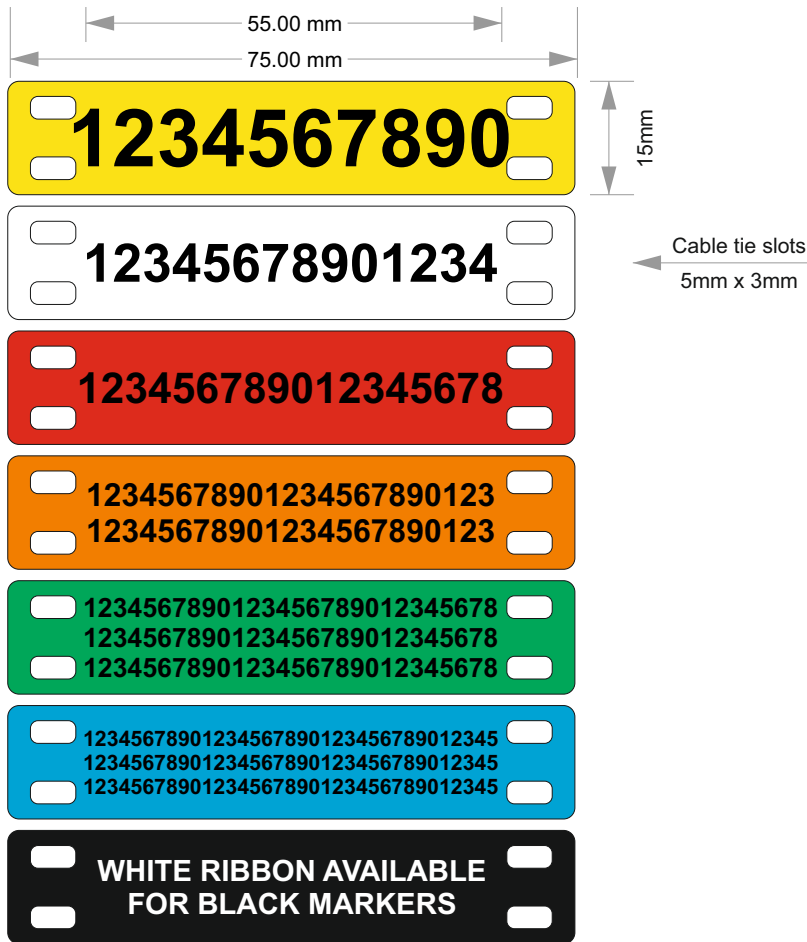
Font size	Font Height	Characters per line	Max lines
ETC-(colour)-012055-D			
30	7.5mm	9	1
20	5mm	14	1
15	4mm	19	2
12	3mm	23	2
10	2.5mm	28	3
8	2mm	35	3



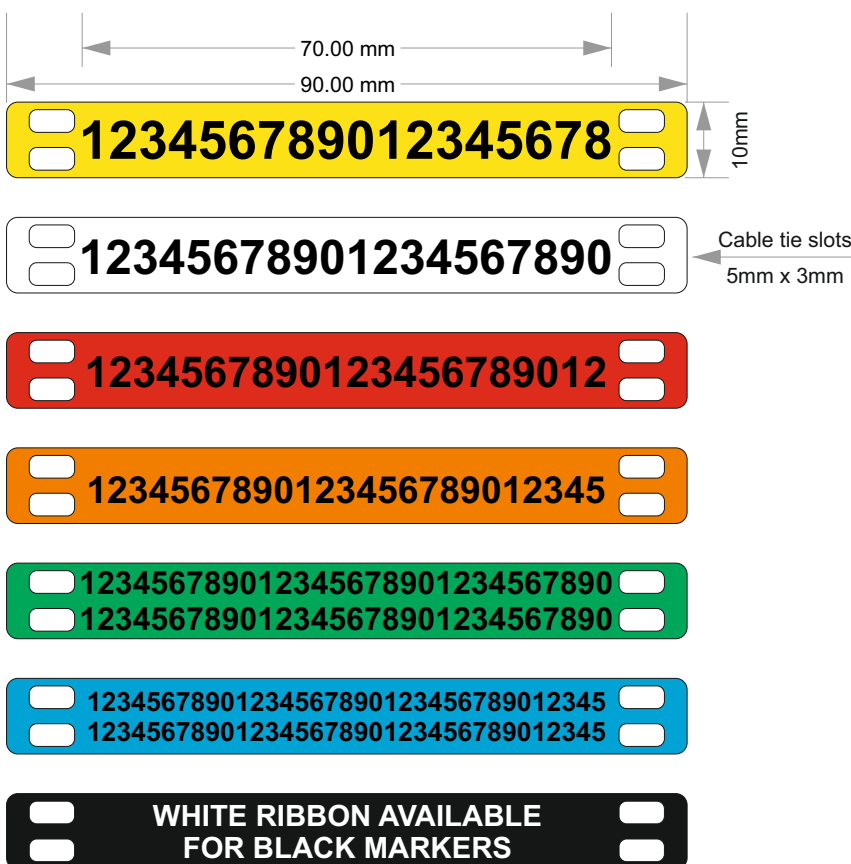
ETC Tie-on Cable Markers (ladder format)

Characters per marker guide

A selection of fonts sizes are shown below, showing the maximum number of characters available per marker. Font used is Arial bold.



Font size	Font Height	Characters per line	Max lines
ETC-(colour)-015055-D			
30	7.5mm	10	1
20	5mm	14	1
16	4mm	18	2
12	3mm	23	2
10	2.5mm	20	3
8	2mm	25	3



ETC-(colour)-010070-D			
20	5mm	18	1
18	4.5mm	20	1
16	4mm	22	1
14	3.5mm	25	1
12	3mm	30	2
10	2.5mm	35	2

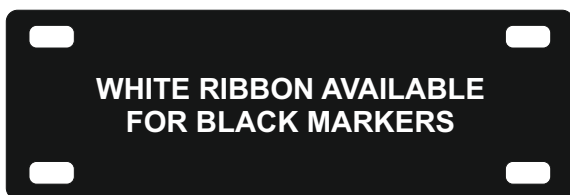
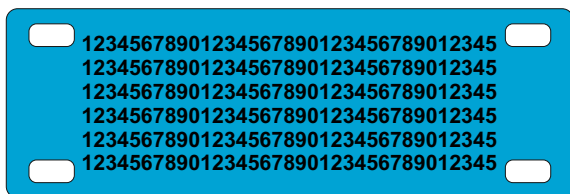
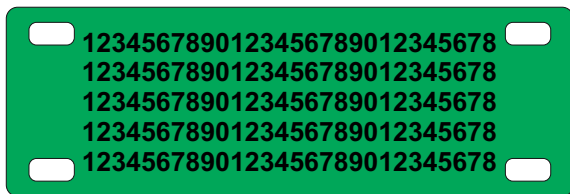
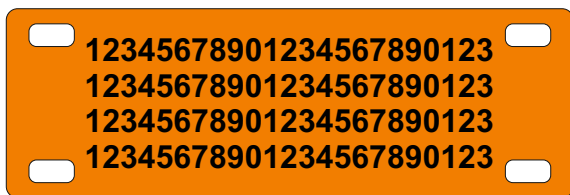
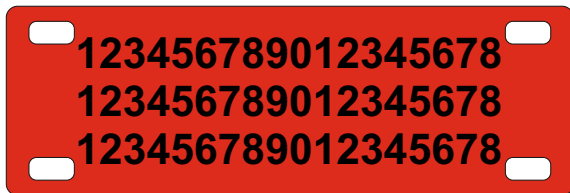
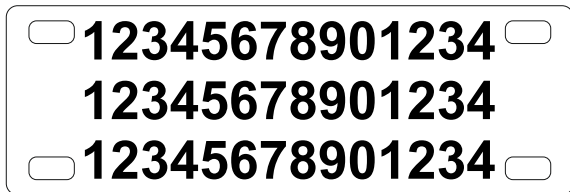
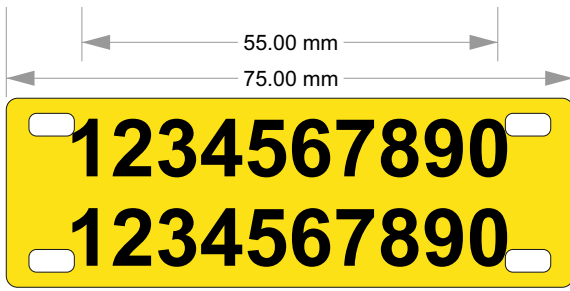


ETC Tie-on Cable Markers (ladder format)

Characters per marker guide



A selection of fonts sizes are shown below, showing the maximum number of characters available per marker. Font used is Arial bold.



Font size	Font Height	Characters per line	Max lines
ETC-(colour)-025055-D			
30	7.5mm	10	2
20	5mm	14	3
16	4mm	18	3
12	3mm	23	4
10	2.5mm	20	5
8	2mm	25	6

